



Fritch 'n Chips

Official Newsletter of the Blackall Range Woodcrafters Guild Inc.
Issue No. 146

August 2009

Postal Address: PO Box 150 Montville 4560

Website: www.blackallrangewoodies.org.au

Shed Ph: 0409 050 418



President's Column

Good day everybody! We've just had our annual general meeting, and yours truly has been persuaded to be president for one more year. The new office bearers are shown later in the newsletter. All the usual culprits plus some more!

An AGM is an opportunity to reflect on club achievements over the last year, so here goes:

- A major highlight has been the construction of the mezzanine floor, funded by a \$7,000 grant from the Sunshine Coast Regional Council.
- We have acquired a new 15" thicknesser, a precision table saw, a bandsaw slabbing unit, and a Gifkins dovetail jig.
- Successful open days, Christmas and July Expos, and a stall at the Maleny Chainsaw to Fine Furniture show.
- General courses on woodturning and woodcarving. Courses on making squatter's chairs, free form boxes, garden benches and canoes. All well-attended.
- The area adjacent to the container was concreted and a base established for the slabbing unit.
- The toy-making group expanded greatly, with over 300 toys donated to the Salvos.
- Guild safety reviewed. Safety face shields now for all freestanding machinery and dust masks and ear protection provided to members at cost.
- Donation of a large amount of red cedar and red bean timber.
- General tidying around and leading up to the shed.
- A new website.

Note the role of events coordinator taken on by Rick Vickers. Rick's role is to not to run events but to make it easier for the people who do. Let Rick know about an event you are planning, and he will support you, for example by reminding you what about things you might have forgotten, and by providing people to help.

Thanks also to (i) those who attended a meeting on club safety where some good ideas were raised; (ii) Lionel Tilley for his fine bandsaw talk; (iii) John Tynne and John Drewe for their bedside tables; (iv) Bob Keyte for making a metal cover for our bandsaw mill; (v) Max Berringer for setting up our new PA system.

Don't forget that, as our contribution to the Festival of Walks, we will be open until 3pm on Saturdays 29 Aug and 12 Sep, and on Sat 5 Sep there will be an open day at the shed, with a BBQ and items for sale.

– All the Best, Dave Banister

Shed Times

Mondays	General Activities
Tuesdays	Turning & Carving
Wednesdays	General Workshop & Toys
Thursdays	Furniture & Joinery
Saturdays	General Activities & Demos
General Meeting	2nd Monday of the month 9:30
General Meeting	2nd Monday of the month 9:30

Special Events

29 August	Club open until 3pm
5 Sep	Open Day, BBQ, Sale
12 Sep	Club open until 3pm
3 Oct	MVA Gala Day
21, 22 Nov	Montville Xmas Expo
6 Dec	Christmas Party

New Members

No 397	Anthony Lewis of Montville
No 398	Robert Heelan of Flaxton
No 399	Doug Shepherd of Montville
No 400	William MacDonald of Obi Obi

A big BRWG hug for you all.

Message from the Treasurer

We received some comments from our auditor, who was concerned about our Daily Sheets (the one you sign when you arrive at the Shed).

The message is simply this. **When you put money in the bowl, write down the exact amount against your name.**

Shed Captain Roster

August 2009

Monday		Wednesday		Thursday		Saturday	
3	Harry Wood	5	John Close	6	John Clarke	8	Peter Simpson
10	Ray Curry	12	Bob Keyte	13	Lionel Tilley	15	Doug Skinner
17	Dave Banister	19	Cec Wakerley	20	Terry Crowson	22	Dave Banister
24	George Blowers	26	Keith Muirhead	27	John Drewe	29	Warne Wilson

September 2009

Monday		Wednesday		Thursday		Saturday	
		2	John Close	3	John Clarke	5	Dave Banister
7	Harry Wood	9	Bob Keyte	10	Lionel Tilley	12	Doug Skinner
14	Ray Curry	16	Cec Wakerley	17	Terry Crowson	19	Dave Banister
21	Dave Banister	23	Keith Muirhead	24	John Drewe	26	Warne Wilson
28	George Blowers	30	John Close				

TUESDAYS are organized by carvers including George Blowers.

If you can't make it on your day, please arrange for someone to swap with you!

DUTIES AND RESPONSIBILITIES OF SHED CAPTAINS

Shed Captains are volunteers who are placed in charge of the shed from the time they open the shed until they close it down. They signify their identity by displaying their name on the board provided and wearing the Shed Captain badge.

Shed Captains may transfer their responsibility for all or part of a meeting to another Shed Captain by mutual agreement. If a change is necessary and a replacement is not available, the rostered member is to notify the President. The shed must not operate without the presence of a Shed Captain and members must always be able to identify who is Shed Captain.

The main responsibility of the Shed Captain is to safeguard those members present, Guild property and other assets in the care of the Guild. Their duties include:

- a. Opening the building and preparing it for members' arrival. This will include the required lighting, checking the mobile phone, undertaking a quick security check to ensure no breach has occurred since the last meeting, turning on the water pump, filling and turning on the urn and opening the general doorways.
- b. General supervision and liaison with Activity Officers and Safety Officers to ensure Guild policies and procedures are being observed. Be particularly watchful to detect any unsafe practices and tactfully ask them to counsel those members involved.
- c. Acting as overall coordinator should any emergency situation occur. For this reason, Shed Captains are urged to be familiar with appropriate actions in the event of emergencies, and if they do not have First

Aid qualifications, to be aware of members who do in the event of their assistance being required.

- d. Reporting to the Shed Manager any aspect of building, equipment and meeting operations requiring attention.
- e. In conjunction with Activity Officers, supervising members' use of club equipment, reminding them of accreditation requirements, general safety procedures, the need to subscribe required usage fees and the procedure to follow to be properly qualified to use each item of equipment. Ensure 'Blue Badge' members in particular are made to feel comfortable. Ensure members pay for timber and other items as far as practicable.
- f. Being the first contact for enquiries from visitors, prospective new members, the media etc. in the absence of any specific member expecting such contact.
- g. Closing down the building at the end of each meeting (phone, urn and other equipment, electricity switches, general cleanliness, water pump, lighting, air filtration units and security of workshop and toilet block) in accordance with established and publicised club policy and procedures.

Shed Captains are rostered for specific days in accordance with a regular list of meetings and these days will be shown on the roster.

Shed Captains are senior members who act with the authority of the Committee and Membership, and wear the Shed Captain badge with pride. Please assist them in carrying out their responsibilities whenever you can.

– Peter Simpson, Safety Officer

MALENY TIMBER PTY. LTD.
 CORAL STREET, MALENY 4552
Phone: 5494 3400

• Pine • Ply • Hardwood • Mouldings •
 10% Discount to BRWCG

Save Time and Money
 COMPETITIVELY PRICED
 QUALITY WOODWORKING PRODUCTS
 ALL AT A LOCAL ONE-STOP-SHOP

WOOD N' WORKSHOP
 for all your woodworking needs.

CRAFT & CABINET TIMBERS GLUES & FINISHES
 MACHINERY & ACCESSORIES HAND TOOLS
 FIXTURES & FIT UPS VENEERING ACCESSORIES

ALL PRODUCTS BACKED BY EXPERIENCE & TECHNICAL KNOWLEDGE

Where we are: 1A / 4 DUAL AVE
 KAWANA QLD
 PH: (07) 5493 5069

Caloundra signs
 Excellence in Visual Identity

Marty Bond
 Ph/Fax (07) 5492 5655
 Mob 0418 838 499
 Email calsigns@westnet.com.au

MAPLETON HARDWARE
 Your handy hardware store.

Cnr. Obi Obi Rd & Emu Walk,
 MAPLETON.
 Phone/Fax: 5445 7773.
"Dremels" & Accessories
"Carb-i-tool" Router Bits

See us first for WATTYL stains & paint; dressed timber; sheet goods & dowels; hand & power tools at low, low prices; tool sharpening service; key cutting; and nursery & garden supplies.
 C'mon in and say G'day!
Rob & Toni.

CHAINSAWS: Guide Bars and Chains

Article 6 of 11

The guide bar and chain together make up the "business end" of any chainsaw. If that combination is not working, then nothing happens in the way of cutting timber. That's why it's useful to have some basic understanding of their respective functions.

The guide bar has the very important job of carrying the cutting action of the chain on to and into the timber and of providing a stable guide for the chain as it moves around the bar at very high speed. Modern guide bars come in two kinds:

"Hard-nosed" – that is, made in one solid steel piece with a special hard-facing at the outer tip where the chain turns, and

"Sprocket-nosed" – that is, with a sprocket similar to the drive sprocket, incorporated in the tip of the bar, and turning on a roller bearing.

The sprocket-nosed bar, such as the Stihl "Rollomatic", which is becoming much more common, has these advantages over the hard-nosed type:

1. It requires less power to drive the chain, because there's less friction on the tip of the bar. This means more power for the job of cutting wood.
2. The tip of any guide is where most wear occurs. On the sprocket-nose bar, this tip can be replaced, thus extending the life of the bar.
3. Being able to replace the tip of the bar greatly reduces the cost of maintaining the saw.
4. Correct chain tension is easier to maintain – a significant safety factor, because a loose chain considerably increases the risk of kick-back.

But hard-nosed bars, which were very successfully used for many years before the introduction of the sprocket-nosed type, still have some advantages. They'll keep working under very dirty operating conditions, for instance.

However, the disadvantage of the non-replaceable tip

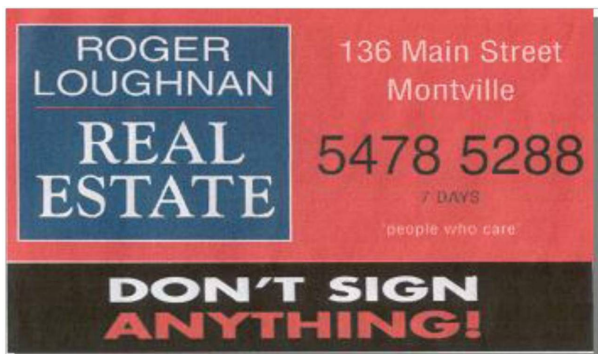
means that when the vital hard-facing on the tip does wear out eventually, the whole bar has to be replaced.

Lubrication of the guide bar is very important. Automatic oiling systems such as the Stihl "Oilomatic" and "Ecomatic" systems are used on modern chainsaws, but it's important to use the oil recommended by the manufacturer.

Using old engine oil to lubricate a guide bar will greatly reduce its life.

Next – Getting the right chain

– Mr Ed



Contact Roger Loughnan Real Estate for the largest range of exclusively listed properties on the Blackall Range from \$100,000 - \$2,000,000. Actively supporting our community

Timber flow and Storage

The warmer and drier weather this month has had a good effect on the kiln, as a moisture reading indicates that the present load of camphor laurel is ready to remove for storage in the racks.

We have good stocks of popular timbers including camphor laurel, silky oak, hardwood, red cedar and red bean. Other timbers are also available including tulip oak, white cedar and white ash.

Ron Donald has continued to slabs logs on dry Saturdays. Green slabs under corrugated iron, and waiting for the kiln, include jacaranda and black wattle.

The annex area near the kiln is a general mess and I will be calling soon for a working bee to reorganise the racks we have available, which are currently being cluttered with odd pieces and short lengths of various types. The camphor laurel in the back racks is partly of poor quality, being the remains of much sorting to find the best colour, and I will need workers to help trim these slabs to usable timber.

Please be aware that wood dust of all types is dangerous to health, but some timbers in particular need special care. Please wear a mask when working with red bean or Mackay cedar.

The kiln is functioning well with the new timers. The fans circulating hot air from the heat collector on the roof switch on and off during each day, but it would be an advantage to have automatic switching on the exhaust fans to have them on a time later in the day so as to remove the hot moisture-

laden air after the heat build-up.

In loading and unloading the kiln, the dangerous practice of six men running with a narrow trolley loaded with a ton of timber to get it up and into the kiln must stop before someone is injured. I can see two possible solutions:

- Either use the trolleys on the flat concrete to bring the timber to the kiln, and load it into the kiln by hand.
- Or, engineer a winch and cable with a hole in the back wall to pass the cable through the paint shop to an anchor point near the water tank.

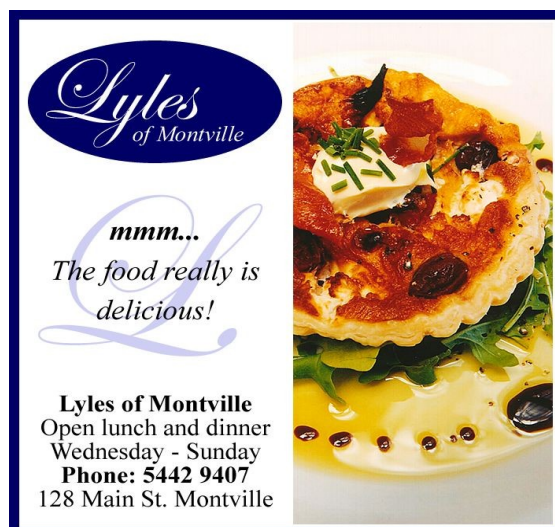
– Warne Wilson

For Sale:

Morton Lathe
Scroll Chuck

Some tools, gouges, etc.

Contact Paul Smith
"Montville Woods"
Western Avenue, Montville
Phone: 0418 873 183



Shed captains:

On Sat 25 July, a meeting of senior members was held to discuss the role of shed captain. The main driver of the meeting was that, with the club's growth, safety is an increasing issue. The role of the shed captain was felt to be pivotal. For this reason, it was decided that:

- The name of the day's shed captain will be clearly visible on entry to the shed.
- The Shed Captain will be clearly visible.
- Members are to make themselves aware of who is Captain that day.
- The Activity Officers are to assist the Shed Captain.
- The Shed Captain will focus on activities in and out of the shed, rather than working on their own projects.
- The duties of the Shed Captain will be written up and available for all to see.



Antique Furniture Restoration Supplies
 48 Webster Road, Stafford, 4053
 Ph (07) 3391 5764 Fax (07) 3112 6197
 www.goodsandchattels.com
10% Discount for Club Members

Tools as explained by an engineer:

DRILL PRESS: A tall upright machine useful for suddenly snatching flat metal bar stock out of your hands so that it smacks you in the chest and flings your beer across the room, denting the freshly-painted vertical stabilizer which you had carefully set in the corner where nothing could get to it.

WIRE WHEEL: Cleans paint off bolts and then throws them somewhere under the workbench at the speed of light. Also removes fingerprints and hard-earned calluses from fingers in about the time it takes you to say, 'Oh ****'

ELECTRIC HAND DRILL: Normally used for spinning pop rivets in their holes until you die of old age.

SKILL SAW: A portable cutting tool used to make studs too short.

PLIERS: Used to round off bolt heads. Sometimes used in the creation of blood-blisters.

BELT SANDER: An electric sanding tool commonly used to convert minor touch-up jobs into major refinishing jobs.

HACKSAW: One of a family of cutting tools built on the Ouija board principle. It transforms human energy into a crooked, unpredictable motion, and the more you attempt to influence its course, the more dismal your future becomes.

WISE-GRIPS: Generally used after pliers to completely round off bolt heads. If nothing else is available, they can also be used to transfer intense welding heat to the palm of your hand.

OXYACETYLENE TORCH: Used almost entirely for lighting various flammable objects in your shop on fire. Also handy for igniting the grease inside the wheel hub out of which you want to remove a bearing race.

TABLE SAW: A large stationary power tool commonly used to launch wood projectiles for testing wall integrity.

HYDRAULIC FLOOR JACK: Used for lowering an automobile to the ground after you have installed your new brake shoes, trapping the jack handle firmly under the bumper.

BAND SAW: A large stationary power saw primarily used by most shops to cut good aluminium sheet into smaller pieces that more easily fit into the trash can after you cut on the inside of the line instead of the outside edge.

TWO-TON ENGINE HOIST: A tool for testing the maximum tensile strength of everything you forgot to disconnect.

PHILLIPS SCREWDRIVER: Normally used to stab the vacuum seals under lids or for opening old-style paper-and-tin oil cans and splashing oil on your shirt; but can also

be used, as the name implies, to strip out Phillips screw heads.

STRAIGHT SCREWDRIVER: A tool for opening paint cans. Sometimes used to convert common slotted screws into non-removable screws.

PRY BAR: A tool used to crumple the metal surrounding that clip or bracket you needed to remove in order to replace a 50-cent part.

HOSE CUTTER: A tool used to make hoses too short.

HAMMER: Originally employed as a weapon of war, the hammer nowadays is used as a kind of divining rod to locate the most expensive parts adjacent the object we are trying to hit.

UTILITY KNIFE: Used to open and slice through the contents of cardboard cartons delivered to your front door; works particularly well on contents such as leather seats, vinyl records, liquids in plastic bottles, collector magazines, refund checks, and rubber or plastic parts. Especially useful for slicing work clothes, but only while in use.

DAMMIT TOOL: Any handy tool that you grab and throw across the garage while yelling 'DAMMIT' at the top of your lungs. It is also, most often, the next tool that you will need.

Who's Who in BRWG Inc. 2009-2010		
Patrons: Peter Wellington MP and Cr Jenny McKay		
President	Dave Banister	5439 9113
Vice President	Cec Wakerley	5439 9862
Secretary	Jeff Harrison	5478 5692
Assistant Secretary	George Blowers	5441 1597
Treasurer	Keith Muirhead	5445 9037
Assistant Treasurer	Peter Dallimore	
Newsletter Editors	Kay Chambers	5443 9631 (before 7pm)
	Dave Edmond	5478 6932
Publicity Officer	Gerry Zwart	5445 7212
Recruitment Officers	Dave Banister	5439 9113
	Lionel Tilley	
Events Organiser	Rick Vickers	
Safety Officers	Peter Simpson, Dave Banister	
Activity Officers	Ray Curry, Cec Wakerley, John Drew, John Clarke, Warne Wilson, Dave Banister, Peter Simpson, Bob Keyte, Keith Muirhead	
Shed Managers	Harry Wood, Doug Skinner, John Holland	
Amenity Officer	Alan Boag	
Timber Sourcing	Ron Donald, George Blowers	
Timber Flow, Storage & Kiln Officers	Warne Wilson, Ron Donald	
Purchasing Officer	Lionel Tilley	
Librarian	Brian Holsworth	

