



Flitch 'n Chips

Issue No. 225

March 2016



Presidents Report

G'Day all Woodies,

One quarter of 2016 gone; Easter is over and we hope all Woodies had a safe and restful Easter break. Apologies about the confusion over opening on Good Friday. In the end, the Shed was opened for those enthusiastic "Friday Woodies"; Thanks to Dave Edmond for putting his hand up as Shed Captain.

The Cooroora Woodworkers Club annual inter-club competition is on again and as mentioned in the last newsletter, Ron Fishwick is the coordinator for this event on our behalf. Please seriously consider entering a piece which you have completed this year. Ron has put up a registration sheet on the notice board and we really want a good representation of the BRWG talents.

Thanks to all the members who attended the general meeting and approved the development plan for the future of the Guild. On the 16th March, I attended the monthly meeting of the Montville Village Association and presented our case for the development plan. It was well received and the meeting moved and passed a motion to the affect of approving the Guild's plan. We are now putting together costs etc so applications for grants can proceed to implement the plan.

Our next big event will be the Chainsaw to Fine Furniture Expo. This looks like being bigger than before, due mainly to the extra day in the long weekend.

We will be missing the services of Graham Bradford for the maintenance during all of April. This is a very responsible position and we are looking for someone to step up to fill in during Graham's absence. If you would like a go at it, please see one of the committee.

A Woodie in Maleny is going overseas for one to two years and has a jointer he does not want to store in a container. He has offered the jointer to lend to any Woodie prepared to look after it in his absence. It is Rexon 300mm jointer with spare blades and is 3HP single Phase. It's footprint is 1800 x 900.

If you are interested, his details are: Steve Miller 0400 466 643.

To all Woodies not feeling the best, look after yourself, get well and keep creating in wood.

Cheers,
John Muller
President.

ROGER LOUGHNAN
REAL ESTATE

Selling houses, land, farms in Maleny, Montville, Mapleton & beyond
Ph: (07) 5478 5288

Shop 2 / Corner Post Office Road & Obi Obi Road, Mapleton
sales@rlre.com.au www.rlre.com.au Open 7 Days



The STAIR COMPANY

A Division of Trafalgar Projects Pty. Ltd. ACN 008 502 663

Unit 1, 34 Page St., Kunda Park, Qld 4556
Tel 5445 2189
Fax 5445 6392
E. admin@thestaircompany.com.au
Post P.O. Box 5332 Maroochydore BC 4558



Some general tips this month:

Glue:

FORCING GLUE: To force glue into a tight spot like a crack, put a little dab of glue where you want it and then blow it deep into the tight spot using a straw. Sounds crude, but it works.

SPREADING GLUE: An old toothbrush (or a new one) makes a terrific glue spreader in some applications like spreading glue on edge of a board. It spreads the glue evenly, and it's easy to clean up. If you've got to cover a large area in a short time, use a 2" or 3", short-napped paint roller.

INSIDE CORNER SQUEEZE-OUT: Before assembly, apply a piece of masking tape along both sides of a joint line along an inside corner. The excess glue oozes out onto the tape (mostly) and saves you some time cleaning glue out of the corner. If you don't like tape, try scooping out the excess glue with the end of a plastic straw. The soft plastic takes the shape of the corner as you move it along the joint line.

FREE SCRAPER: When glueing up panels, try using a plastic clip from a bread bag to scrape away freshly beaded or skinned-over beads of glue along a joint line.

FINISHING: To get a really smooth finish on a project, it's important to sand between coats. This eliminates any "nibs" that can be caused by anything from dust in the air to bubbles in the finish.

CUTTING PLYWOOD:

When cross-cutting a plywood panel, the bottom layer of veneer often splinters out along the cut line. But there are steps you can take to prevent this.

The most common way to get a clean cut is to score the panel along the cut line before making the cut. To do this, cut through the veneer layer with a sharp utility knife.

While this method works, it's sometimes difficult to line up the saw blade with the scored line. An easier way is to score the panel is to use the saw blade itself!

The idea is to make the cut in two passes. On the first pass, set the blade just high enough to cut through the veneer layer. Then raise the blade to finish the cut on the second pass.

Another way to keep the veneer from splintering on the bottom is to use a backing board. This is a piece of plywood or Masonite placed below the workpiece when making the cut; the veneer layer is then fully supported and the plywood can be cleanly cut.

Another technique sometimes suggested is to cover the cut line with masking tape or durex. The idea is that the tape holds the wood fibres in place so they don't splinter out during the cut. This works alright; but there is a problem, when the tape is removed it may pull any damaged fibres with it.

Safety Notes

By Warne Wilson and Dave Banister



GENERAL SAFETY IN THE SHED:

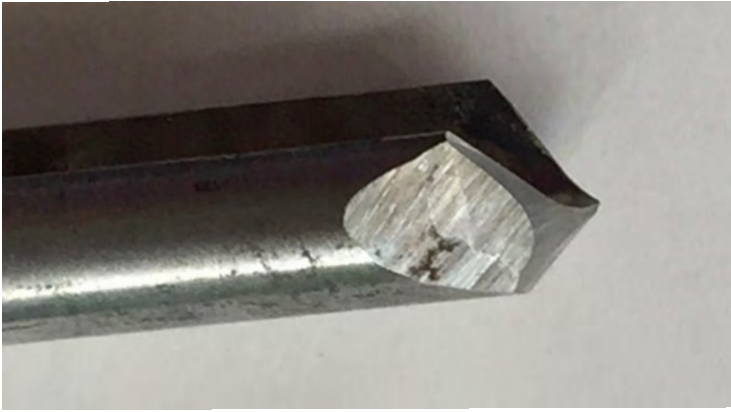
Please adhere to these safety rules in the Shed:

1. Thongs or flimsy footwear are forbidden; it is too easy to drop a heavy or sharp tool, or a piece of wood.
2. Loose clothing or strands of jewellery must not be worn, particularly if working with power tools or machines.
3. It is imperative to switch off and pull the plug before adjusting a power tool or machine.
4. If making dust when sanding, the project must be taken outside.
5. When using a polishing cloth or sandpaper on a spinning item in a lathe it must be small enough to overcome any chance of it catching and taking your hand with it.
6. Reminding Shed Captains to switch on the overhead air filters; anyone who has helped remove the filters for cleaning will attest to the necessity for this.
7. And a mention of some of the Shed Captains' duties for those who do not understand why the Shed Captain is here. The Shed Captain arrives before anyone else, opens the Shed and switches on. The cash sheet is prepared then as members start projects, an eagle eye is kept on machinery use and safe working. If a member is advised to desist with an unsafe practice and does not conform, the Shed Captain has full authority to order that person to cease using the machine or tool. In the event of fire, injury, or an emergency the Shed Captain will take charge.

The Shed Captain will greet visitors; arrange accreditations, and record maintenance items and requests for consumables. At the end of the session, often after the last member has gone, the Shed Captain will balance or attempt to balance the cash, lock up, circle the Shed switching off all lights and machines, sweep and tidy up where members have used machines and walked away and generally ensure that our Shed and its contents are safe and secure.

8. A note about balancing the sheet with the cash received. Often the cash will be out, usually just two or three dollars; either over or under. Please be careful not to put extra change in the tin without recording it, or if you record a payment please make sure not to get distracted and to forget to put it in. Our books are audited at the end of each year and we have a problem if the daily sheets do not tally with cash received.

Around The Shed



On the left is the Club Turning Gouge that was found at the Shed after "someone" tried to sharpen it. On the right is the same gouge after being properly sharpened by Tony Haigh.



Last month, John Holland demonstrated the correct use of two essential hand held power tools - the power saw and the belt sander



Maintenance Report by Graham Bradford



March 2016

Laguna bandsaw - Table alignment adjusted, blade guard modified, blades replaced on three occasions due to wear suspected of being caused by curve cutting. Strainer in upper swarf suction removed.

Rack for bandsaw blades installed. Wadkin bandsaw blade sent for repair.

Blade on blanks bandsaw renewed. Numerous Jet blades repaired.

There are too many blade breakages on the 14" Jet bandsaw, and members must use it within its capacity.

Bosch docking saw replaced with Makita saw due to damage from misuse. Repairs completed on Bosch docking saw.

Height adjustment on Jet drum sander repaired. Sanding elements replaced twice due to fouling by unsuitable timber.

New belt fitted to finisher. White grinder tool rest repaired. Pyrograph handpiece cable renewed.

Repairs to saw guard of Sherwood docking saw.

Repairs to No. 4 Jet lathe speed control.

Damaged inserts on 380 mm Thicknesser replaced.

It is good to note members are accepting the use of the main docking saw workpiece clamp.

CAMPBELL'S

UPHOLSTERY

Phone : 5494 0133
Fax : 5494 0133

Gary & Cheryl Campbell

- Camper Trailers
- Vehicle Interiors
- Furniture Upholstery
- Boat & 4WD Canopies

Unit 7 / 47 Beerwah Parade, Beerwah 4519 Queensland

MIGHTY HELPFUL

MITRE 10 TIMBER and HARDWARE

MALENY

"For all your hardware needs"

Phone 5494 2466

10% Discount to BRWG

Training & Club Projects with Rob Otto.

The cedar nest of tables is coming along great, we have decided to start a second set after the fantastic donation of some lovely Red Cedar by Ray Curry. Thanks Ray!

There will be a demonstration by Lionel Tilley on Saturday the 16th April on the Gifkins dovetail jig.

We would like to see a larger attendance of newer members at the demos. If any member would like further help with the equipment after the demos please speak to the demonstrator or me Rob Otto.

There are still places in the upcoming courses, check the sheets on the noticeboard and put your names down, we are here to help.

Club Events Calendar from Rick Vickers

The following dates have been finalised and bookings made -

Maleny Wood Expo Sat 30/4 - Mon 2/5

Brisbane Working with Wood Show 27, 28, 29 May.

Club Expo and Competition at Montville Community Hall - Thur 30 Jun to Sun 3 Jul.

Santa Shop at St Mary's Hall Montville (in conjunction with Lighting of the Christmas Tree) - Sat 3/ Sun 4 Dec

Woodies Christmas Party - 10 Dec

Our 20 year Anniversary & Open Day will be date sometime in September - still to be determined by committee.

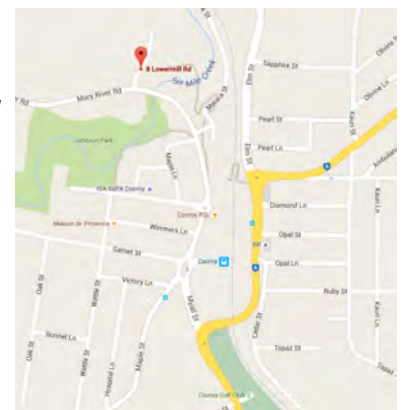
A note from Cooroy Woodworkers regarding a change of venue for this years Wood & Craft Show on May 6&7 -

Due to the closure of the Cooroy Memorial Hall, this year's show will be held at our Club Rooms at 8 Lowermill Road, Cooroy. Entries in all the competitions will be on display within the Clubhouse which offers more room than was available on the stage of the Hall. Other woodwork displays, demonstrations, tool suppliers and community groups will be housed in marquees grouped around the club. The nearby concrete pad will again be used for timber milling. Our show committee has had to work extra hard to make this year's show the best ever and we look forward to seeing your members work.

FIRST SAW WAS A SERPENT



Greek legend has it that Talus invented the first saw in 1,200 B.C., according to author Ronald S. Barlow. In his book, *The Antique Tool Collector's Guide to Value* (\$12.95, Windmill Publishing Co., El Cajon, Calif., 1985), Barlow says the ancient Greek discovered the principle of set saw teeth while severing a tree limb with the jawbone of a large serpent. He later reproduced the snake's teeth on a sheet of hammered iron. And the rest, as they say, is history.



MAPLETON HARDWARE

Your handy hardware store.

Come in and see us for all your hardware needs.
Hand Tools, Sleepers, Power Tools, Drill Bits, Paint and Stains.
Plus Plumbing and General Hardware

Open 7 Days

Rob, Toni and Laurie

Cnr Obi Obi Rd & Emu Walk
MAPLETON
Phone 5445 7773

DIGITAL SIGNAGE SPECIALISTS

Bruce Allen
Director

ATL Graphix

atlgraphix@bigpond.com
www.atlgraphix.com.au

p 07 5494 0666
f 07 5494 0677



ONLY LIMITED BY YOUR IMAGINATION!



Matt Baxter put his Scrollsaw skills to use and produced this lovely turtle shaped box.

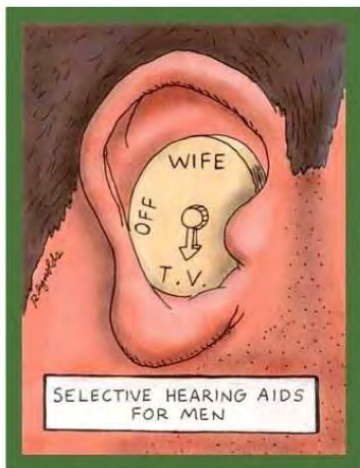
www.startsat60.com

www.facebook.com/startsat60



The huge cross which has been taking up so much room in the Shed is nearly complete and ready to deliver to Stella Maris Church in Maroochydore. The cross has been constructed from timber milled from a Mango tree that had to be removed to make way for the new church.

Selective Hearing Aid



STARTS
60
AT
WE LOVE IT

**MALENY
GLASS &
ALUMINIUM**
Robbie Palmer

24 hour Fast Glass Replacement

Mobile: 0427 943 733
Phone: 5494 3733 Fax: 5494 3473
6 Lawyer Street, Maleny



