

Flitch 'n Chips

Official Newsletter for Blackall Range Woodcrafter's Guild Inc.
Issue No. 140

February 2009

Postal Address: PO Box 150 Montville 4560

Website: google "Blackall Range Woodcrafters"

Shed Ph: 0409 050 418



President's Column

Hello again, doesn't time fly - another busy month has hit the dust, as you will find out in this issue of Flitch 'N Chips!

Seven citizens of our area have joined us as members. I am sure you will enjoy your time with us, and I for one, will assist you wherever

possible. Congratulations on joining the best! I must thank Warne Wilson once again for volunteering for the job of Open Day co-ordinator. Also, Warne is the man who keeps the timber supply flowing, while in charge of the kiln. Thank you Warne. Terry Madison, one of our new members, gave us an excellent lecture and demonstration on first aid last week. Thank you very much Terry, I feel sure all 36 attending members gained a lot from this presentation.

I recently attended a meeting called by the Montville Village Association regarding the future and the maintenance of the Sports Ground. One of the decisions made and we came home with, is that we will have to contribute towards the cost of mowing the grounds. Other participants at the meeting, i.e. the soccer club, the tennis club, and the yet to be formed art club, all had some 'out of this world' items on their wish list. Our sole commitment so far is a donation of a garden seat, to be raffled by MVA.

I prefer not to finish on a sad note, but listening to the radio at the time of writing, it would be amiss of me if I did not mention the horrendous bush fires in Victoria. Members may have noticed our flag at half-mast. So far, that is all we can do, besides expressing our sincere sympathy. Perhaps in the not too distant future, we can do something more substantial. This is largely up to you, our members.

In closing, I hope you will all contribute in some way towards Open Day.

All the Best, Dave Banister, President.

What s On When?

Shed Times	Mornings from 8:30 - 11:30
Mondays	General Activities
Tuesdays	Turning & Carving
Wednesdays	General Workshop & Toys
Thursdays	Furniture & Joinery
Saturdays	General Activities & Demos
General Meeting	2nd Monday of the month 9:30

OPEN DAY Saturday, 14th March

WHO'S WHO IN BRWG INC. 2008/2009

Patrons Peter Wellington MLA and Jenny McKay

President	Dave Banister	5439 9113
Vice President	Cec Wakerley	5439 9862
Secretary	Jeff Harrison	5478 5692
Assistant Secretary	George Blowers	5441 1597
Treasurer	Keith Muirhead	5445 9037
Assistant Treasurer	Jacqui Porteous	5478 5071
	Tom Black	5478 5472
Newsletter Editors	Gerry Zwart – Editorial	5445 7212
	Kay Chambers – Prod'n	5443 9631 (before 7pm)
Publicity Officer	Gerry Zwart	5445 7212
Recruitment Officer	Dave Banister	5439 9113
Safety Officers	Peter Simpson, Dave Banister	
Activity Officers	Ray Curry, Cec Wakerley, John Drew, John Clarke, Warne Wilson, Dave Banister, Peter Simpson, Bob Kyte, Keith Muirhead,	
	Harry Wood	
Shed Manager	Alan Boag	
Amenity Officer	Ron Donald, George Blowers	
Timber Sourcing		
Timber flow, Storage & Kiln Officers	Warne Wilson, Ron Donald	
Purchasing Officer	Cec Wakerley	
Librarian	Brian Holsworth	

A BIG THANK YOU

To Cecelia Willings who has donated a pyrography tool and associated books as well as a set of carving tools and books to the club for use by our members.

Ina Mallett will be demonstrating this new addition at our Open Day.

OPEN DAY – Saturday March 14

As mentioned in the January issue of Flitch 'N Chips, this most important event on the Woodies' calendar is almost upon us again.

The public will start to arrive at 9am, with most immediately starting to find their own way around, but hopefully we will have members available to conduct tours around the shed, so that people will at least get some idea of what they are looking at.

Tool Sales will be one of the highlights for the woodcraft-minded public. As with the sale of other products, this will commence at 9am. By 11am any tools not sold will be auctioned, which usually attracts a keen crowd.

Besides the sale of tools and completed woodcraft, we also need a variety of items for display. People never get enough of looking at the magnificent finished items created by some of our members. As time is running short, we advise all members eager to exhibit or sell some of their wares to get busy. We need your products to make this day a success.

Demonstrations are always good crowd pullers.

These include slabbing, carving, pyrography, turning and more. If you are capable and willing to assist with any of the demonstrations, please contact the co-ordinator, Warne Wilson.

Other volunteers are required as parking attendants, shed tour leaders, raffle sales, sausage sizzle and tea and coffee sales. With well over 100 active members, it should not be difficult to fill these positions.

Don't leave it to the usual handful of members.

Remember this is one of the events that raises part of the funds that buy the machinery and other facilities we all enjoy.

Think about it, and act now!

Co-ordinator Warne Wilson is anxiously waiting for you to call, his number is 5499 9974.

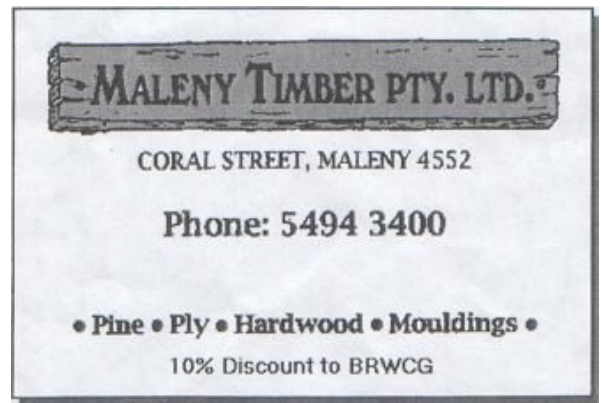
OPEN DAY RAFFLE

This one is quite different, as there are two prizes of equal value. The first ticket drawn will have the choice of prize.

For the watersport enthusiast, we have a 15' 6" two-man canoe, glass over ply.

If the winner is a landlubber, we have a squatters chair with matching side-table in silky oak.

Get into selling your tickets, they make money to maintain the quality of our shed and its contents.



FREEFORM JEWELLERY-BOX MAKING COURSE

*If interested ring Lionel Tilley on 54296629
date to be decided - probably a Friday am
cost \$15 (money goes to club funds)*



Save Time and Money
COMPETITIVELY PRICED
QUALITY WOODWORKING PRODUCTS
ALL AT A LOCAL ONE-STOP-SHOP

WOOD N' WORKSHOP
for all your woodworking needs.

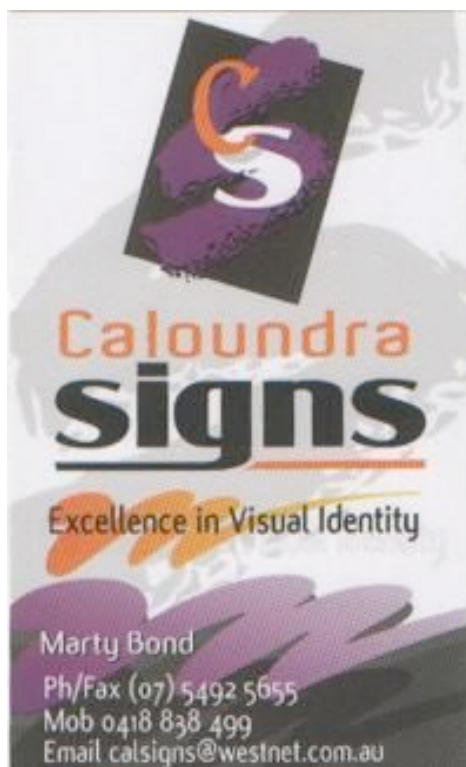
CRAFT & CABINET TIMBERS
MACHINERY & ACCESSORIES
FIXTURES & FIT UPS

GLUES & FINISHES
HAND TOOLS
VENEERING ACCESSORIES

ALL PRODUCTS BACKED BY EXPERIENCE & TECHNICAL KNOWLEDGE

Where we are:

1A / 4 DUAL AVE
KAWANA QLD
PH: (07) 5493 5069



SHED CAPTAIN ROSTER

February 2009

Monday	Wednesday	Thursday	Saturday
2 Harry Wood	4 Keith Muirhead	5 John Clarke	7 Peter Simpson
9 Ray Curry	11 John Close	12 Lionel Tilley	14 Doug Skinner
16 Dave Banister	18 Bob Keyte	19 Terry Crowson	21 Dave Banister
23 George Blowers	25 Cec Wakerley	26 John Drewe	28 Warne Wilson

March 2009

2 Harry Wood	4 Keith Muirhead	5 John Clarke	7 Peter Simpson
9 Ray Curry	11 John Close	12 Lionel Tilley	14 Doug Skinner
16 Dave Banister	18 Bob Keyte	19 Terry Crowson	21 Dave Banister
23 George Blowers	25 Cec Wakerley	26 John Drewe	28 Warne Wilson
30 Harry Wood			

April 2009

	1 Keith Muirhead	2 John Clarke	4 Peter Simpson
6 Ray Curry	8 John Close	9 Lionel Tilley	11 Doug Skinner
13 Dave Banister	15 Bob Keyte	16 Terry Crowson	18 Dave Banister
20 George Blowers	22 Cec Wakerley	23 John Drewe	25 Warne Wilson
27 Harry Wood	29 Keith Muirhead	30 John Clarke	

Every Tuesday – Organised by carvers including George Blowers & Tom Black.

GET WELL HARRY

As most of us know, Harry Wood has been on the sick list for some time.

Harry, one of our original members with a most appropriate name, has spent some time in hospital. He is by now re-cooperating at home and progressing slowly.

Having spoken to him by phone recently, he appears to be doing the right thing by looking after number one.

It could be some time before we see Harry actively engaged again in the shed. So, to ensure the machinery in the shed keeps well maintained, the General Meeting last Monday, accepted the offer from Don Gibson to fill the gap, with the assistance of two new members, Graham Bradford and Jack Myer.

From all of us at the Woodies' shed,

'All the best Harry, get well soon.'



CHAINSAW DEMO

A talk and demonstration on the do's and don'ts of chainsaw use, will be held on **Saturday 14th at 9am** at the Shed.

Member Ed Kruger, who was heavily involved with chainsaws throughout his working life, has kindly offered to share his knowledge with his fellow members.

This is a 'must attend' demo if you use a chainsaw, to ensure you fully understand how dangerous they can be, and the pitfalls to avoid when using them.



12" REXON table saw. T.C.T. blade
single phase motor. \$440 ONO
ALSO

Free form Red Cedar slabs for coffee
table tops. Various sizes, naturally
dried. Ready for your imagination and
ability to convert into a family heirloom.

Ray Curry 5445 0061

10" table saw and 2HP dust extractor incl. ducting kit,
heavy duty fence, sliding table, finger board & push
sticks, Incra mitre guage - hardly used since new.

Hugh 0412739306

Teknatool lathe and many attachments and tools,
enough to set you up ready to work! \$650

Dave 5494 4134

Generic saw bench component - has saw bench and
planer combined - can be separated - 10" blade. \$200

Peter Cook 5445 7674

WANTED. . .

Tools of all descriptions and in working order to be
used in the tool sale section of our Open Day.

We must have these in no later than 8.30am on the
day – March 14, but preferably before.

You put your own price on them, and if sold, the club
will take the usual commission.

Any items not sold by 11am, will go to auction. Your
price will be regarded as the reserve price unless you
inform the organizers differently.

WANTED - Band saw - medium size.

Peter Cook 5445 7674



Antique Furniture Restoration Supplies
48 Webster Road, Stafford, 4053
Ph (07) 3391 5764 Fax (07) 3112 6197
www.goodsandchattels.com

10% Discount for Club Members

FLITCH 'N CHIPS DELIVERY

The last issue of F & C was delivered by email
to those who have notified us of an email
address, as well as a copy by "snail mail".
I believe Kay, our production expert, has
received a number of complimentary reactions.
She has also been told by a few other members
that they prefer the old method.

According to the Management Committee, we
save a fair amount of money going email and
they tell me it cuts Kay's workload considerably.
Lucky Kay, it doesn't save the Editor any time,
as he still has to write every word (and his typist
has to be able to read that writing!)

If you have any opinions about this, come to the
next meeting on Monday March 9 at 9.30am.,
and let us know.

Gerry Zwart - Editor

Following on from Gerry's comments I would
like to thank all members who have opted for
the email version. My apologies for the last
issue not being printed double-sided! A fault of
the printer but not at the Club's expense, thank
goodness. Each person receiving an email now
saves the club approximately 65c every month.
With over a hundred doing so that is a saving
of \$65 a month or \$780 a year.

If you have an email address, are receiving this
as hard copy and would be happy to get it by
email (in colour and on the day it is produced!)
then please email me.

kay.chambers@bigpond.com

Kay Chambers - Producer

CLUB SHIRTS

A fresh batch of those bright and recognizable
'Woodies' shirts have now been ordered.

These shirts always stand out well, making our
members look professional on Open Days,
Expos and trips to other shows.

They are available in different sizes, and the
price is still only \$35. Wouldn't it be nice if all of
our members turned up on 'Open Days' in a
Club shirt.

Just watch the notice board for details.

OH, WHAT A BEAUTY!

Have you seen that huge bowl Paul Siddall has made for his daughter to take home with her to London? Having seen it as a 'work in progress', we can only say 'we hope she has plenty of cash to pay the excess!' To give you a few statistics:
The timber is mango, the size of the blank is 430mm, but to give you a better idea, look at the pictures!



A man riding his Harley along the Great Ocean Road was stopped in his tracks by a booming voice. The Lord said to him "Because you have tried to be faithful to me in all ways I grant you one wish."
"Build me a bridge to Tasmania so that I can ride over" said the biker.
The Lord replied, "That is too materialistic. Think of the challenges, the use of natural resources, the cost to the planet!"
The biker thought and then said, "OK, I wish I could understand women and how to make them truly happy."
Very quickly the response came, "You want two or four lanes on that bridge?"

THE TOY BOYS AND GIRLS

Santa's elves are at it again. After the successful toy donation to the Salvation Army last Christmas, work is well on the way for the next lot.
Some of the old favourites have already commenced rolling off the assembly line.
To add some variety to the range and give the members some new skills, Chief Toy Boy Don Meredith is once again inventing some new lines. One of these is the entertaining and educational toy we have named 'The Block House'. This most colourful item consists of a small wooden house with a number of odd shaped windows and doors. It comes complete with a number of colourful blocks, each in the shape of one of the openings in the house.
The object is to match the blocks with the windows and doors. Quite novel.



Anyone interested in toymaking should drop in on a Wednesday morning, you'll soon get a job!

BRANDING TOOLS

As mentioned in the last issue of Flitch 'n Chips, Warne Wilson was given the task of sussing out some means of branding items the Guild has donated to any 'Not for Profit' organisations in our area.
To this end, he has found two suppliers who can create a fair dinkum branding iron, Woodies' logo and all!
So, after a little bit of negotiating, we feel sure Warne will come up with the best product.

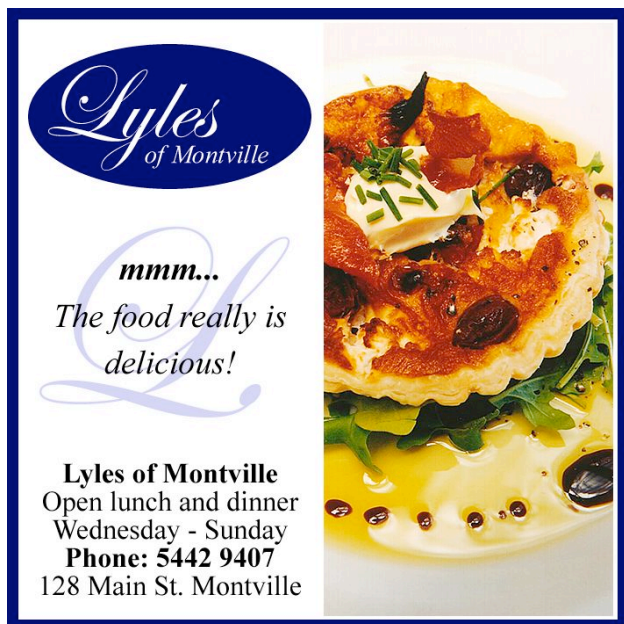
NEW MEMBERS

At the last meeting, the following people were accepted as members of the Blackall Range Woodcrafters' Guild:

No. 375	Peter Dallimore of Sandstone Point
376	Terry Madison of Maleny
377	Robert Rothwell of Nambour
378	Lorraine Vassallo of Nambour
379	Jack Mayer of Montville
380	Iain Green of Flaxton
381	Muriel Wilson of Maleny

To help these good people feel welcome, keep an eye open for those blue 'new member' badges and make yourself known.

From all existing members, congratulations on joining the greatest woodies' show in Queensland. Welcome!



ADVANCE NOTICE

In the past, our club has made and donated some garden-related items to the Nambour Garden Club to raffle, with the proceeds going to the Spinal Muscular Atrophy Association.

Nambour Garden Club will stage an 'Art and Garden Affair' on March 29, and our members have been invited to sell some of their wares on that day, with 10% commission going to S.M.A.A. More details next F 'N C.

MEZZANINE FLOOR

The contract has been signed and the material has been ordered. All we need now is a starting and finishing date, and Bob's your uncle. With a bit of luck, we'll be able to show off the finished product on the Open Day. We may even be able to put a pretty ribbon across the steps and organize an 'Official Opening'.

MORE SAFETY POINTS

It has come to our notice that a few of our members are becoming quite sloppy in their behavior around very dangerous machinery. For instance, leaving timber offcuts lying on the floor.

Just imagine tripping over a lump of wood next to the large bandsaw, or slipping on some chips at the table saw!

Most likely it would not be the culprit who left it there who was likely to get hurt from this carelessness.

While on safety, make sure you use all safety equipment available when operating machinery. Face masks are attached to all machines at no cost to you, as are ear plugs. Dust masks are available at just \$2 each, and it is considered best if members supply their own earmuffs.

TELL ME THIS WON'T HAPPEN TO US!

'I CAN HEAR JUST FINE!!'

Three retirees, each with a hearing loss, were playing golf one fine March day. One remarked to the other, 'Windy, isn't it?' 'No,' the second man replied, 'it's Thursday.' And the third man chimed in, 'So am I. Let's have a beer.'

SENIOR DRIVING

As a senior citizen was driving down the highway, his mobile phone rang. Answering, he heard his wife's voice urgently warning him, 'Herman, I just heard on the news that there's a car going the wrong way on the Bruce Highway. Please be careful!' 'Heck,' said Herman, 'It's not just one car. It's hundreds of them!'