

# Flitch 'n' Chips

Official Newsletter of the Blackall Range Woodcrafters Guild Inc.

Issue No. 158

August 2010

Postal Address: PO Box 150 Montville 4560

Website: [www.blackallrangewoodies.org.au](http://www.blackallrangewoodies.org.au)

Shed Ph: 0409 050 418



## President's Column

*Good-day everybody*

We had our annual general meeting on August 9. So, we have a new club committee and this will be my final newsletter monthly report. My congratulations and best wishes go to all the people involved.

Details of the new committee appear later in the newsletter as does my report for the year 2009-2010.

The most important event on the day of the AGM, in my humble opinion, was the recognition of three new Guild life members: Cec Wakerley, Warne Wilson and Doug Skinner. They have contributed such a great deal to the Guild over a long period of time. So I think, for me, the most moving aspect of the ceremony was how all three spoke of the immense pleasure and satisfaction that they themselves had all got out of being members of the Guild.

Back to more mundane matters: the boundary fence was realigned on the weekend and I'd like to thank club members who helped with this job. With the fence now in its correct position on the line of survey, this presents us with a valuable new area for log and timber storage, and also enable logs to be manoeuvred for slabbing.

I'd also like to thank Audrey Kelly and Jacqui Porteous for their efforts in cleaning the tearoom. The yard is looking clean too, thanks to the efforts of George Blowers with his faithful dingo. The new industrial racks, 12m long, are now in position, awaiting final assembly. I'd also like to thank Denis Campbell for his help in preparing prizes for the Maleny Rangers Football Club. We have also received thanks from that club in the form of a certificate of appreciation.

We have received a proposal from Paul Siddall that we purchase additional wood lathes and associated equipment. As this will involve some expenditure and a likely reconfiguration of the Shed, the proposal will be passed on to the incoming President and his Committee for their consideration.

We have nine new members this month, a tribute I think to our reputation and our recent Expo.

We have a new Shed Manager in Brian Harris, whose efforts can be seen in his monthly maintenance report. Congratulations Brian.

*— All the best  
Dave Banister*

## Shed Times

Mondays	General Activities
Tuesdays	Turning & Carving
Wednesdays	General Workshop & Toys
Thursdays	Furniture & Joinery
Saturdays	General Activities & Demos
General Meeting	2nd Monday of the month 9:30

## New Members

No: 436	George Hodgson of Montville
No: 437	Robert Hall of Maleny
No: 438	Allan Schafer of Little Mountain
No: 439	John Higgins of Kureelipa
No: 440	Bill Klein of Little Mountain
No: 441	Mary Paton of Parrearra
No: 442	Norma Keyte of Mapleton
No: 443	Russell Middlecoat of Maleny
No: 444	Robert Callinan of Montville

**A big BRWG welcome to you all.**



The question is this: were you to ask Peter Simpson to make another wishing well, his response would be:

1. "I'd just love to, mate"
2. A snarl
3. A whimper
4. All of the above

## Shed Captain Roster

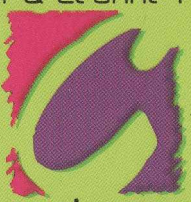
### August 2010

Mondays		Tuesdays		Wednesdays		Thursdays		Saturdays	
2	Brian Harris	3	Tom Black	4	Max Barrenger	5	Lionel Tilley	7	Dave Banister
9	Dave Banister	10	Ray Curry	11	Cec Wakerley	12	Terry Crowson	14	Warne Wilson
16	George Blowers	17	Frank McDonald	18	Leigh Boynton	19	John Drewe	21	Peter Simpson
23	Dave Banister	24	George Blowers	25	John Close	26	John Holland	28	Keith Muirhead
30	Brian Harris	31	??						

### September 2010

Mondays		Tuesdays		Wednesdays		Thursdays		Saturdays	
				1	Max Barrenger	2	Lionel Tilley	4	Dave Banister
6	Dave Banister	7	Ray Curry	8	Cec Wakerley	9	Terry Crowson	11	Warne Wilson
13	Brian Harris	14	Frank McDonald	15	Leigh Boynton	16	John Drewe	18	Peter Simpson
20	Dave Banister	21	George Blowers	22	John Close	23	John Holland	25	Keith Muirhead
27	George Blowers	28	Tom Black	29	Max Barrenger	30	Lionel Tilley		

Brent & Leanne Harris



**caloundra  
Signs**

*Excellence in Visual Identity*

p/f (07) 5492 5655  
m 0418 838 499  
e calsigns@westnet.com.au

**MALENY TIMBER PTY. LTD.**

CORAL STREET, MALENY 4552

**Phone: 5494 3400**

• Pine • Ply • Hardwood • Mouldings •

10% Discount to BRWCG

### ALL ABRASIVES INDUSTRIAL ABRASIVES SUPPLIER



**DAVID BLACK**  
PROPRIETOR



Phone: (07) 5443 9211  
Phone: (07) 5443 9527  
Mobile: 0413 945 798  
Fax: (07) 5443 5714  
4/20 Kayleigh Drive  
Maroochydore Qld 4558



**Save Time and Money**  
**COMPETITIVELY PRICED**  
**QUALITY WOODWORKING PRODUCTS**  
**ALL AT A LOCAL ONE-STOP-SHOP**

**WOOD N' WORKSHOP**  
 for all your woodworking needs.

CRAFT & CABINET TIMBERS      GLUES & FINISHES  
 MACHINERY & ACCESSORIES      HAND TOOLS  
 FIXTURES & FIT UPS      VENEERING ACCESSORIES

ALL PRODUCTS BACKED BY EXPERIENCE & TECHNICAL KNOWLEDGE

Where we are: 

1A / 4 DUAL AVE  
 KAWANA QLD  
 PH: (07) 5493 5089

## Timber Flow and Storage Report

With the warmer weather, the drying is proceeding well, and the kiln should be ready for unloading during September. Most of the load should be ready use immediately, with moisture readings between 10%-15%. However, there are two slabs of Pink Almond which are about 100mm thick, and these may need a second cycle. There are also several thick pieces of Silky Oak on top of the load.

We have plenty of good hardwood in the racks. We tend not to use as much of it as Camphor Laurel and Silky Oak, but hardwood is excellent for precise work and joints. It will take a fine finish and can be stained to enhance its attractiveness.

We purchased a cubic metre of Red Cedar from New Guinea recently. It has been already milled to popular sizes and a supply of it is stored in the rack near the front door. We are able to sell it to members at half the price of commercial timber, and it is worth considering for that special project.

If you are a new member and wish to buy some timber or if you are unsure how to go about tackling a project for yourself, just ask the Shed Captain for the day (the guy or girl with the dayglow badge). Shed Captains are long standing members who have been appointed because of their experience and their willingness to help.

We now have a rack in the yard specially built for pieces and lumps of a wide variety of timbers for turners and carvers. Don't forget to have a look there too when you are planning something a bit different.

— *Warne Wilson*

## MAPLETON HARDWARE

Your handy hardware store

Corner. Obi Obi Rd & Emu Walk  
 MAPLETON

Phone/Fax: 5445 7773

"Dremels" & Accessories

"Carb-i-tool" Router Bits

*See us first for WATTYL stains & paints; dressed timber; sheet goods & dowels; hand & power tools at low, low prices; tool sharpening service; key cutting; and nursery & garden supplies.*

*C'mon in and say G'day!*

*..... Rob & Toni*



Antique Furniture Restoration Supplies  
 48 Webster Road, Stafford, 4053  
 Ph (07) 3391 5764 Fax (07) 3112 6197  
[www.goodsandchattels.com](http://www.goodsandchattels.com)

**10% Discount for Club Members**

## For Sale

Very old Red Cedar door.

2060mm x 860mm.

Needs restoring.

Anyone interested, please ring

Dave Collins, 0407 670 721.

**ROGER LOUGHNAN**  
**REAL ESTATE**

136 Main Street  
 Montville

**5478 5288**  
 7 DAYS  
 people who care

**DON'T SIGN ANYTHING!**

*Contact Roger Loughnan Real Estate  
 for the largest range of exclusively listed properties  
 on the Blackall Range from \$100,000 - \$2,000,000.  
 Actively supporting our community*



## President's Report: 2009-2010

This last year has been a busy one but one in which we have accomplished a lot. Sadly, it was also a year in which we lost two of our senior members, one of whom was a founder and past President of this club, Harry Wood, and of course we all miss that other great character, Bob Keyte. But it was also a year that saw us move forward in significant ways. Our membership has increased as a result of your efforts at our Expos and exhibition days, and as our skill levels have increased so too has our reputation within the community. Training courses and in-house demonstrations are ongoing, particularly wood turning and intarsia and this has contributed to our overall skills.

Regarding our skill levels, in May this year we entered a competition run by the Cooroy Woodies for all clubs. Although pipped for first place by just one point, overall the judges were so impressed that they awarded us a special prize. Our Toy Boys do us proud each Christmas with donations to the Salvation Army and the Sunshine Coast Hospice. The MVA, the Montville Chamber of Commerce, and Maleny Sport and Recreation Club and others have been thrilled with our contributions and assistance. We have also sponsored and helped one of our members set up a woodworking club in his retirement village on Kawana Island and we will continue to encourage others to get into a shed and to start making sawdust

I am personally pleased to say that we have installed our second container - finally! And the neighbour's fence re-alignment has also been accomplished. We are currently installing additional steel storage racks for timber, we have purchased new equipment such as our table saw, an easily adjustable router - for which we thank John Holland and co. for making its new table, a 15" thicknesser plus a helix spiral cutter to go with it, and we have fixed the entry road and filled in the holes we hope for the last time. Let's not forget our new sound system and portable mike set up, installed with the help of Max Barrenger, and of course our new mezzanine floor which has given us some much needed additional storage space. And with all this spending we have finished this year financially stronger than we have ever been before.

Perhaps most pleasing has been the conclusion of seemingly never-ending discussions with the MVA on our lease, which had expired this year. This has now been extended for a further two years on the same terms and will be favourable continued thereafter on an ongoing basis. We have also now been given the final approval from Council for our shed, so we are legal. I thank every member of this club for their support, their assistance and their hard work for the year that has gone and I encourage them to keep lifting the bar and setting standards that are the envy of other clubs everywhere.

As my final act as President, and with the unanimous agreement of all Committee Members, it gave me great pleasure to award life membership to Cec Wakerley, Warne Wilson and Doug Skinner. "Above and Beyond the Call of Duty" is a well used but appropriate description of the contributions of these highly valued people.

## Life memberships:

### Cec Wakerley (#14):

Cec is a Guild founding member and has been fully involved ever since. His knowledge of woodcraft and the ability to impart this knowledge to others is very high. He has taken an organising role in many of our public events and has been Vice-President on several occasions. He is a man of principle and integrity, without being pushy, which is why he is such a popular member. He has made a sustained contribution since the club's inauguration.

### Warne Wilson (#22):

Warne was also at the inaugural guild meeting in 1996 and joined a month later. Although still working at the time, Warne was able to contribute a great deal of his spare time to the Guild over a decade, providing practical tuition. He has been Vice-President for several years, and President for 2007-2008. Since that time Warne has taken on responsible practical roles associated with the preparation of timber for members' use, especially that of Kiln Manager. His diverse and detailed knowledge of hand tools and general woodcraft activities have been shared with many members and his sustained efforts are worthy of recognition.

### Doug Skinner (#84):

Doug has contributed strongly since joining the Guild in 2000. His greatest achievements are his untiring efforts on the design and construction of our shed not long after joining us. He was also involved deeply with subsequent shed layout changes and extensions, as well as the design, establishment and operation of our drying kiln, which broke ground in several areas. His Presidency in 2004-2005 was a strong one and he always volunteered his time to share skills with others on a formal and informal basis, spending time on various projects big and small. He is also a person of principle and integrity with a strong sense of needs of the community, and his decade long contribution is being recognised.



**Congratulations to Cec Wakerley, Doug Skinner and Warne Wilson**

## Annual General Meeting

The 2010 AGM was held on August 9. The new Committee was elected as follows:

President	Peter Simpson
Vice President	Warne Wilson
Treasurer	Keith Muirhead
Assistant Treasurer	Jacqui Porteous
Secretary	David Edmond
Assistant Secretary	George Blowers
Newsletter Editors	Max Barrenger, Dave Edmond
Publicity Officer	Gerry Zwart
Recruitment Officers	Dave Banister, Lionel Tilley
Events Organiser	Rick Vickers
Safety Officers	Dave Banister, Warne Wilson
Shed Managers	John Holland, Brian Harris
Amenity Officers	Alan Boag, Gill Blowers
Timber Sourcing Officers	Phil Gibson, Doug Skinner
Timber Flow, Storage & Kiln Officer	Phil Gibson
Purchasing Officer	TBA
Librarian	Brian Holsworth



**Outgoing President Dave Banister congratulates Peter Simpson on his election as Guild President for 2010-2011.**



**Warne Wilson and Phil Gibson discuss some knotty timber problems.**



**Pandemonium sets in before the meeting.**



**Incoming Secretary Dave Edmond being "congratulated" by outgoing Secretary Jeff Harrison.**

## Hearing Protection

*This the second and final part of an article by BRWG member Iain Green. It first appeared in Issue 66 of the Australian Wood Review*

**Prevention of hearing loss: Noise induced hearing loss is 100% preventable.** Firstly, you need to understand the likely range of noise in your workshop. Noise varies a lot between different types of equipment and depends on what you are doing. Here are some indicative noise levels that I've collected from a range of sources to give an idea of what can be expected:

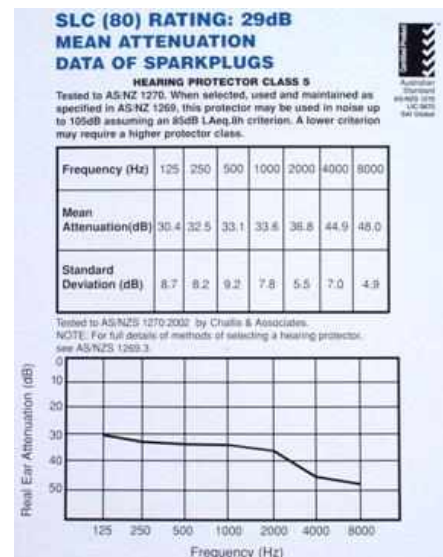
Cordless Drill	68-73 dB
Chisel Mortiser	74dB
Drum Sander	75dB
Dust Collector	82dB
Jointer	88-104dB
Bandsaw	90dB
Compressor	92dB
Belt Sander	90-95dB
Moulder	92dB
Radial Arm Saw	92-100dB
Hand held Belt Sander	101dB
Jigsaw	101dB
Orbital Sander	101dB
Table Saw	84-103dB
Mitre Saw	105dB
Biscuit Jointer	105dB
Router	100-115dB
Circular Saw	118dB
Shop-Vac	123dB
Framing Nailer (pneumatic)	125dB

Noise from woodworking equipment certainly has the potential to cause hearing loss.

The preferred way to control this noise is to minimise it at its source – this includes relocating noisy machinery to sound-proof enclosures and selecting machinery that makes less noise.

Usually though, there remains a significant level of noise around woodwork machinery and we need to wear earplugs or earmuffs to reduce this to an acceptable level. Using the above table or preferably, measurements with a noise level meter, gauge the likely noise level in your workshop. From this, you can estimate the reduction necessary to reduce noise exposure to less than 85 dB and preferably, to less than 75 dB.

Hearing protectors sold in Australia come with a lot of information. The most relevant standard is AS/NZ 1270. The information should include an indication of the level of noise attenuation that 80% of users will experience. This is known as the Sound Level Conversion (SLC<sub>80</sub>) rating. In addition, there should be a statement of the maximum noise level at which the protector will reduce the noise level to below 85 dB.

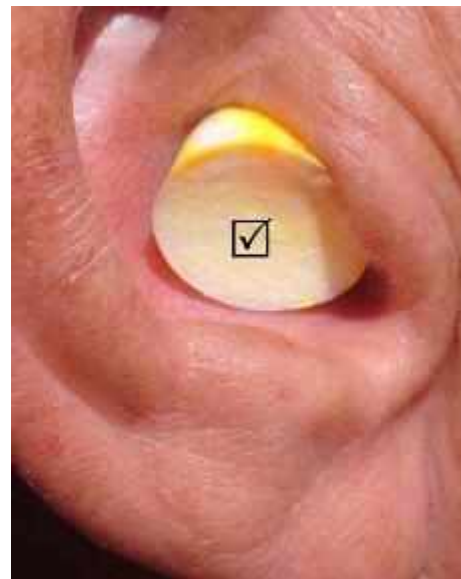


I am currently using Moldex "Sparkplugs" earplugs and Uvex xV earmuffs. They offer SLC<sub>80</sub> ratings of 29 dB and 37 dB respectively and can be used in environments of 105 dB and 110 dB respectively.

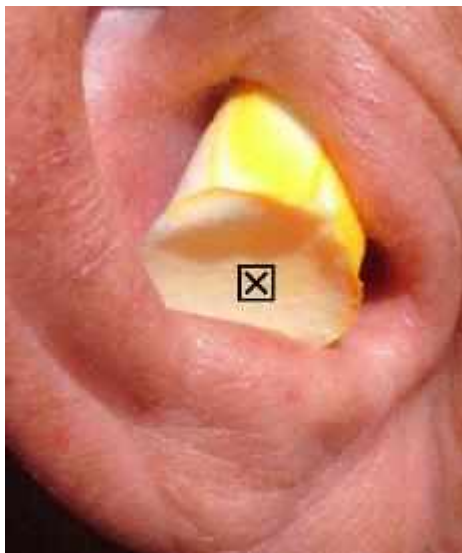
Hearing protectors are classified into 5 classes and this also provides a simple guide to suitability for your situation:

Hearing Protection Class	Noise Exposure Level (dBA)
1	Less than 90 dBA
2	90 to less than 95 dBA
3	95 to less than 100 dBA
4	100 to less than 105 dBA
5	105 to less than 110 dBA

Both earplugs and ear muffs are available in each of these ranges and which you use is largely a matter of personal preference and comfort. I haven't seen earplugs with an SLC<sub>80</sub> rating of more than 29dB, so you will need to use earmuffs for higher levels of protection.







Care with fitting ear muffs is also required as long hair and glasses can compromise the seal around the ears and drastically reduce the effectiveness of the protection offered.

Finally, avoid long periods of work on noisy equipment as there is a cumulative effect that leads to damage. It is better for example, to break up an 8 hour task into two 4 hour periods on different days.

The difficulty with hearing protection is that it is hard to be sure of the noise level you are facing and often, there is little indication when your hearing is being damaged. Certainly, ringing in the ears (tinnitus) should be taken as a warning that damage is occurring.

I think this means that hearing protection requires a conservative approach. Earplugs and earmuffs that offer higher levels of sound attenuation don't cost much more and don't seem more uncomfortable to wear, to me. However, you may need to visit a safety equipment specialist to find them.

— *Iain Green*

### **Duties and Responsibilities of Shed Captains:**

Shed Captains are volunteers who are placed in charge of the shed from the time they open the shed until the time they close it down. They must signify their identity by displaying their name on the board provided and wearing the Shed Captain badge.

A Shed Captain may transfer their responsibility for all or part of a meeting to another Shed Captain by mutual agreement. If a change is necessary and a replacement is not available, the rostered member is to notify the President. The shed must not operate without the presence of a Shed Captain and members must always be able to identify who is Shed Captain.

The main responsibility of the Shed Captain is to safeguard those members present, Guild property and other assets in the care of the Guild. Their duties include:

a. Open the building and prepare it for the arrival of members. This will include the required lighting, checking the mobile phone, undertaking a quick security check to ensure no breach has occurred since the last meeting,

turning on the water pump, filling and turning on the urn and opening the general doorways.

b. General supervision and liaison with Activity Officers and Safety Officers to ensure Guild policies and procedures are being observed. Be particularly watchful to detect any unsafe practices and tactfully ask them to counsel those members involved.

c. Act as overall coordinator should any emergency situation occur. For this reason, Shed Captains are urged to be familiar with appropriate actions in the event of emergencies, and if they do not have First Aid qualifications, to be aware of members who do, in the event of their assistance being required.

d. Report to the Shed Manager any aspect of building, equipment and meeting operations requiring attention.

e. Assist the Activity Officers in the supervision of the use of club equipment by members, reminding members of accreditation requirements, general safety procedures, the need to pay required usage fees and the procedure to follow to be properly qualified to use each item of equipment. Ensure 'Blue Badge' members in particular are made to feel comfortable. Ensure members pay for timber and other items as far as practicable.

f. Be the first contact for enquiries from visitors, prospective new members, the media etc. in the absence of any specific member expecting such contact.

g. Close down the building at the end of each meeting (phone, urn, other equipment, electricity switches, general cleanliness, water pump, lighting, security and air filtration units) in accordance with established and publicised club policy and procedures.

Shed Captains will be rostered for specific days in accordance with a regular list of meetings, and these days will be shown on the Shed Captain roster.

***Wear the Shed Captain badge with pride!***

### **July Machine Maintenance**

06/07/10 Jet Lathe 1440 No.16, Headstock serviced, cleaned, new belt, grub screws replaced, speed control adjusted, all lubricated with graphite powder.

10/07/10 Table Saw, new crown gearwheel fitted, front plate modified for easier access.

14/07/10 Table rollers on 20" Thicknesser adjusted and lubricated.

17/07/10 Roller on Jet sanding machine cleaned and adjusted, still not running satisfactorily, but better than before.

19/07/10 New 7" wood vice fitted to table as previous one had stripped its thread.

21/07/10 Jet overhead screen air filters cleaned, but require replacement socks soon, as these are clogged with dust, and cannot be cleaned and need to be replaced.

31/07/10 No.2 Band Saw new blade fitted.


— *Brian Harris*

Do Not Read This Joke—if you're a Woman

**NINE WORDS WOMEN USE**

- (1) **Fine:** This is the word women use to end an argument when they are right and you need to shut up.
- (2) **Five Minutes:** If she is getting dressed, this means a half an hour. Five minutes is only five minutes if you have just been given five more minutes to watch the game before helping around the house.
- (3) **Nothing:** This is the calm before the storm. This means something, and you should be on your toes. Arguments that begin with nothing usually end in fine.
- (4) **Go Ahead:** This is a dare, not permission. Don't Do It!
- (5) **Loud Sigh:** This is actually a word, but is a non-verbal statement often misunderstood by men. A loud sigh means she thinks you are an idiot and wonders why she is wasting her time standing here and arguing with you about nothing. (Refer back to # 3 for the meaning of nothing.)
- (6) **That's Okay:** This is one of the most dangerous statements a women can make to a man. That's okay means she wants to think long and hard before deciding how and when you will pay for your mistake.
- (7) **Thanks:** A woman is thanking you, do not question, or faint. Just say you're welcome. (I want to add in a clause here - This is true, unless she says 'Thanks a lot' - that is PURE sarcasm and she is not thanking you at all. DO NOT say 'you're welcome' . That will bring on a 'whatever').
- (8) **Whatever:** Is a woman's way of saying F-- YOU!
- (9) **Don't worry about it, I got it:** Another dangerous statement, meaning this is something that a woman has told a man to do several times, but is now doing it herself. This will later result in a man asking 'What's wrong?' For the woman's response refer to # 3.

<b>Who's Who in BRWG Inc. 2009-2010</b>		
<b>Patrons: Peter Wellington MP and Cr Jenny McKay</b>		
<b>President</b>	<b>Dave Banister</b>	<b>5439 9113</b>
Vice President	Cec Wakerley	5439 9862
Secretary	Jeff Harrison	5478 5692
Assistant Secretary	George Blowers	5441 1597
Treasurer	Keith Muirhead	5445 9037
Assistant Treasurer	Peter Dallimore	
Newsletter Editors	Kay Chambers	5443 9631 (before 7pm)
	Dave Edmond	5478 6932
Publicity Officer	Gerry Zwart	5445 7212
Recruitment Officers	Dave Banister	5439 9113
	Lionel Tilley	
Events Organiser	Rick Vickers	
Safety Officers	Peter Simpson, Dave Banister	
Activity Officers	Ray Curry, Cec Wakerley, John Drew, John Clarke, Warne Wilson, Dave Banister, Peter Simpson, Keith Muirhead, Brian Harris	
Shed Managers	Doug Skinner, John Holland, Brian Harris	
Amenity Officer	Alan Boag	
Timber Sourcing	Ron Donald, George Blowers	
Timber Flow, Storage & Kiln Officers	Warne Wilson, Ron Donald	
Purchasing Officer	Lionel Tilley	
Librarian	Brian Holsworth	



*mmm...*  
*The food really is delicious!*

**Lyles of Montville**  
Open lunch and dinner  
Wednesday - Sunday  
**Phone: 5442 9407**  
128 Main St. Montville

