



# Flitch 'n Chips

Issue No. 205

July 2014

## Presidents Report



Hi Fellow Woodies,

Hallelujah, it's finally happened!



After many months of negotiations, we now have a 7 year lease with the MVA for the site for our Shed, with continuing 7 year options into the future, all signed, sealed and delivered.



*President Frank and Doug Patterson of the MVA sign the lease agreement.*

As many of you know, the dust extraction motor died. With much grunting and a terrific effort by some of our members the 40kg motor was removed from the roof and sent to Kawana Rewinds for assessment. Unfortunately, after testing it was decided a new motor was the best option, and Kawana Rewinds went out of their way to have it ready for us quickly and it has now been installed with a lot more grunting. Thanks to everyone involved, that's what's great about this club, if help is required it's always forthcoming.

Our July Expo was a great success thanks to all the members who participated, and a special thanks to all the ladies who laboured over hot stoves to provide a delicious display of home-made cakes and biscuits.



Congratulations to everyone who entered the club competition, the standard of craftsmanship was very high, making the judges decisions very difficult. The Club Championship for 2014-2015 was won by Graham Shackell for his outstanding Intarsia Eagle. The people's choice was won in a very close battle by Tony Gallwey for his beautiful round, carved table. Congratulations to both of you.

The club has two projects in the pipeline at the moment.

1. Camphor Laurel blanket box for an order from the expo, led by Graham Bradshaw and
2. Bookshelves for the range Horseless Carriage Club, led by John Holland.

Please join in these projects by writing your name on the list on the noticeboard. It's a great opportunity to learn skills from the experts.

The Sunshine Coast Mayor, Mark Jamieson, will be visiting the Range on Wednesday, July 15 and has

expressed an interest in visiting our Club. Unfortunately it will be between 4 and 5pm so it would be good to have a number of members at the Shed in their Club t-shirts. We would still love to see you even if you don't have a Club t-shirt. You never know when we may need the Mayor's help!

This is my last column before the AGM on August 9th when the new committee will be installed. Once again thank you all for your support throughout the last two years. All positions become vacant and nomination forms for all positions on the management team will be on the noticeboard very soon.

To any of our members not feeling the best at the moment, remember we are thinking of you and wish you all a speedy recovery.

Keep the wood pile low and the shavings high.

Happy Woodworking,  
Frank McDonald  
President.



3/10 Tandem Ave, Warana. Q. 4575  
Ph: (07) 5493 9068 Fax: (07) 5493 9067  
www.kawanarewinds.com krewinds@bigpond.com

## Tips and Tricks

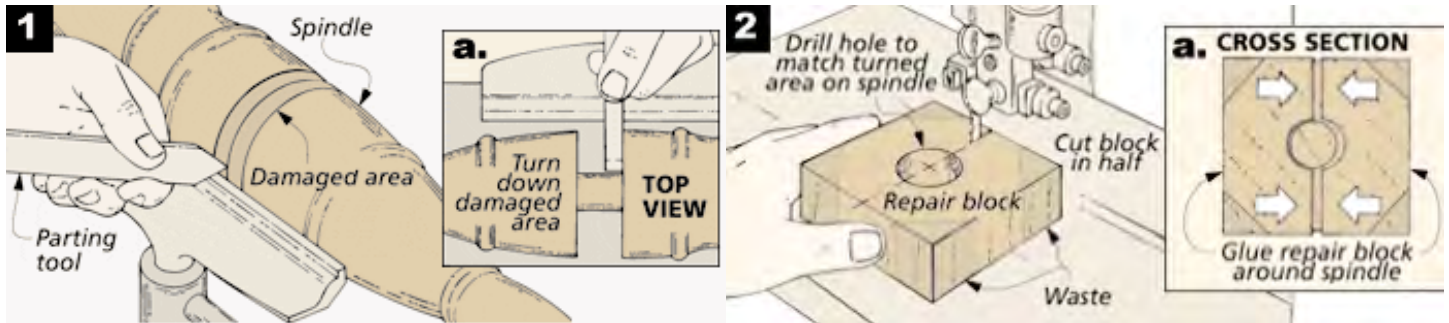
By Warne Wilson

If you get a "Catch" and wreck a spindle, try this trick.

To repair a damaged spindle, turn down the damaged area to a central core. Cut a block of similar wood matching the direction of grain and drill a hole to fit.

Glue and clamp the block in place. When the glue is dry, turn the block down to match the original profile then sand and finish.

Your repair should be barely noticeable.



## Safety Notes

By Warne Wilson and Dave Banister



Woodworking is among one of the safest and enjoyable hobbies we can do, provided we adhere to a set of rudimentary and easy to follow safety rules.

1. Always Wear Safety Equipment A common sense kind of rule, but it's an important one. Reach for the earmuffs when using loud power tools and machines. Hearing is precious, but damage to an eye can be catastrophic; splinters can fly. Do not forget to protect your nose, throat and lungs against dust, especially the fine floating dust.

2. Wear the Right Clothes Loose shirt sleeves can catch in a cutting head or saw blade, as can long hair or loose clothing. Always remove any dangling jewellery or metal such as chains or bracelets before commencing work.

3. Avoid substances that may effect your judgement. Medication, alcohol, fatigue or anything else, which could impair your concentration.

4. Disconnect Power Always disconnect the power source itself before changing blades or bits on power tools. In addition to ensuring the switch is off; switches can be knocked or fail; always pull the plug to be sure.

5. Tailing out When helping someone who is cutting long timber on a saw bench, support the timber only. Do not attempt to correct the cut, and certainly do not attempt to help by pulling the timber. This can distract and annoy the operator and lead to a lapse of concentration.

6. Never use blunt blades & bits While this might seem obvious. Blunt tools have to work harder to cut and as a result can bind or kick back. Sharp bits and blades will ensure cleaner cuts as well.

7. Check timber for metal Before making a cut, make sure that the wood does not carry nails, screws or other pieces of metal. Spinning blades and nails or other pieces of metal do not mix well, causing damage to both the wood and the cutting head. It can also trigger kick back and cause injury. Use a metal detector to ensure the wood is clean.

8. Work against the cutter Power tools and machines are built in a way that require the opposite direction of the cutting head's movement. You need to ensure that the blade or router bit cuts against the wood, not with it.

9. Never reach over a running blade Always wait until a spinning blade has stopped moving before reaching to remove waste. Remove waste by using a push stick to ensure an inadvertent power tool switch malfunction doesn't turn deadly.

10. Minimize distractions When dealing with distractions, finish what you were doing before turning your attention elsewhere.

# THINK

## THE SAFE WAY IS THE BEST WAY



## 24 hour Fast Glass Replacement

Mobile: 0427 943 733

Phone: 5494 3733 Fax: 5494 3473  
6 Lawyer Street, Maleny



## ROGER LOUGHNAN

## REAL ESTATE

Selling houses, land, farms in Maleny, Montville, Mapleton & beyond

Ph: (07) 5478 5288

Shop 2 / Corner Post Office Road & Obi Obi Road, Mapleton  
sales@rlre.com.au    www.rlre.com.au    Open 7 Days

## Around The Shed



Back in April 2011, we donated this bench, complete with carved Dove of Peace, to St Mary's Church at Montville.

Unfortunately the weather took its toll and it came back to the Shed for some TLC.



The bench has now been restored to its former glory and returned to its home at Montville.

For members who have been enquiring about Bruce Haggie and Wood N Workshop at Kunda Park, Bruce offers this info on his web site....  
[www.woodnworkshop.com.au](http://www.woodnworkshop.com.au)

*To our valued Customers,*

*After 7 years of having a shop here on the Sunshine Coast I have made the decision to close down and become an internet / mail order company.*

*I can be contacted by mobile phone on 0468 795 602 during normal business hours but may not always be able to answer straight away if I'm on the machinery so please leave a brief message and I will get back to you.*

*Emailing would be the best way to get in touch as I will be checking this through the day.*

*[info@woodnworkshop.com.au](mailto:info@woodnworkshop.com.au)*

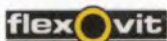
*The website will remain open to purchase orders.*

*Best Regards,*

*Bruce Haggie*

## ALL ABRASIVES

### INDUSTRIAL ABRASIVES SUPPLIER



**DAVID BLACK**  
 PROPRIETOR



Phone: (07) 5443 9211  
 Phone: (07) 5443 9527  
 Mobile: 0413 945 798  
 Fax: (07) 5443 5714  
 4/20 Kayleigh Drive  
 Maroochydore Qld 4558



## CAMPBELL'S UPHOLSTERY

Phone  
 Fax: **5494 0133**

**Gary & Cheryl Campbell**

- Camper Trailers
- Vehicle Interiors
- Furniture Upholstery
- Boat & 4WD Canopies

Unit 7 / 47 Beerwah Parade, Beerwah 4519 Queensland

**Montville Hall the first weekend in July.  
The Woodies Expo!**  
(Photography by Robert Otto)





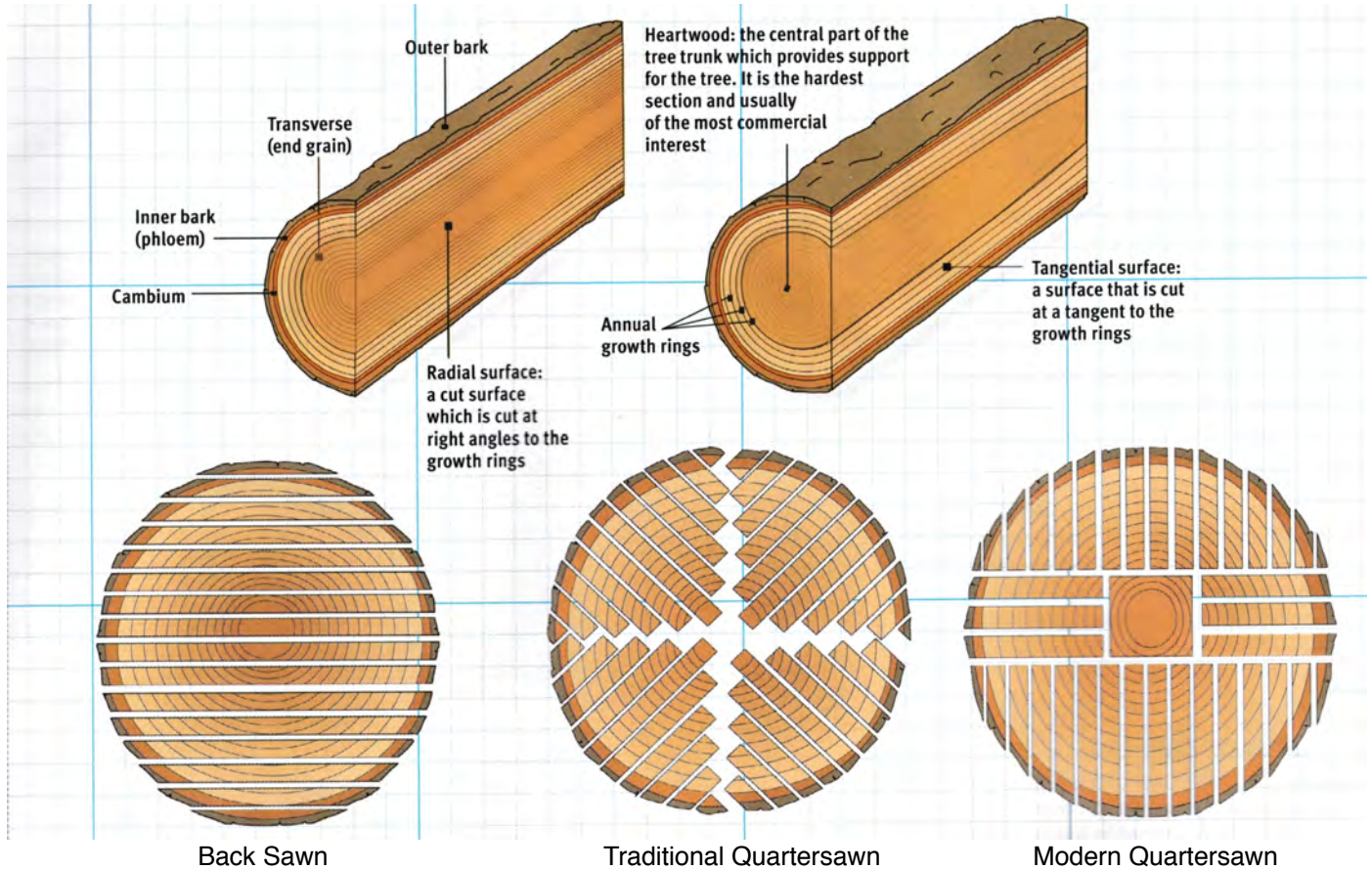
Club Champion for 2014 is Graham Shackell for his Intarsia Eagle



And winner of the Peoples Choice is Tony Gallwey's Carved Round Table



Various sawing patterns and combinations are used to convert logs into boards.....



**Back sawing** or 'flat sawing' produces boards with the faces tangential to the annual growth rings. In 'back' sawing, the log is passed through the blade, cutting off plank after plank without changing the orientation of the blade or log. The resulting planks have different annual growth ring orientations when viewed from the end. The annual rings in the first and last, the most outside planks, curve in long arcs almost parallel to the faces. The annual rings in the planks that are cut as the saw moves toward or away from the center of the log are short arcs that approach the faces at increasingly steeper angles, while the centre planks have annual rings that are nearly perpendicular to the faces, and equate to quarter cutting. Planks from logs fully milled in this manner will invariably split along the central axis of the log as internal tension is released.

In **Quarter Sawing**, the log is first cut into quarters lengthwise and then each quarter is cut separately by sawing boards successively along the axis. That results in boards with the annual rings mostly perpendicular to the faces. Quarter sawing produces an often highly figured edge grain on the face of the board. Consequently, such boards may be referred to as 'edge grain' boards. Quarter-sawn boards are the most expensive to produce. Quarter sawing yields boards with straight striped grain lines, greater stability, and a distinctive ray and fleck figure. It also yields narrower boards, because the log is first quartered, and is more wasteful, but produces more timber with desirable appearance.

Quarter sawn boards have two advantages. They are more resistant to warping with changes in moisture. Shrinkage still occurs, but is less troublesome.

The second advantage is the decorative pattern on the board, although this depends on the timber species. e.g. Quarter sawn oak shows a prominent ray fleck. Quarter sawn sapele is likely to produce a ribbon figure.

A variation of quarter sawing, claimed to reduce waste on large logs, is to cut the log into wedge shaped planks.

In Australia, boards are classed as back-sawn if the growth rings lie at an angle less than 45° to the longer cross-section dimension, or quarter-sawn if the rings lie at an angle greater than 45° to the longer dimension. In the image above, it can be seen that all boards, from the log on the right, would be quarter-sawn when cut this way.

However, if quarter-sawn boards are specified, the expectation may be that the rings are 90° to the longer cross-section dimension  $\pm 10^\circ$ . Quarter-sawn boards are less likely to distort or crack during the drying process and are more stable in service. An advantage with quarter-sawn softwood is that the rate of growth is readily seen when selecting boards. Various sawing patterns and combinations are used to convert logs into boards.

NEIGHTY HELPFUL  
**MITRE 10 TIMBER and HARDWARE**  
**MALENY**

*"For all your hardware needs"*

**Phone 5494 2466**

10% Discount to BRWG

## TOOLS AND HOW TO USE THEM ....



### WIRE WHEEL:

**Cleans paint off bolts and then throws them somewhere under the workbench with the speed of light. Also removes fingerprints and hard-earned calluses from fingers in about the time it takes you to say, ... 'Oh shit' !!**



### DRILL PRESS:

**A tall upright machine useful for suddenly snatching flat metal bar stock out of your hands so that it smacks you in the chest and flings your beer across the room, denting the freshly-painted project which you had carefully set in the corner where nothing could get to it.**



### Multigrips:

**Used to round off bolt heads. Sometimes used in the creation of blood-blisters.**



### HACKSAW:

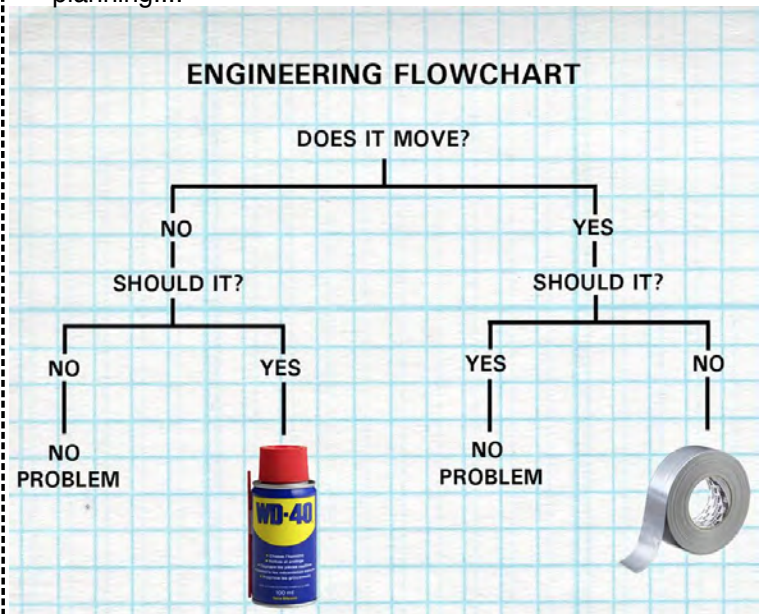
**One of a family of cutting tools built on the Ouija board principle... It transforms human energy into a crooked, unpredictable motion, and the more you attempt to influence its course, the more dismal your future becomes.**

## Maintenance Report

by Brian Harris

- 3/7 The 5hp electric motor on top of the Dust Extractor has been vibrating for some time and finally gave up and stopped working. Several members assisted in removing the motor and associated fan assembly from the top of the cyclone after which Max Barrenger took it to Kawana Rewinds for repair.
- 7/7 Kawana Rewinds reported that the motor was beyond economic repair and a new good quality motor would be the most cost effective replacement.
- 10/7 The new motor assembly, having been collected from Kawana the previous day, (excellent service) was hauled up onto the top of the cyclone with the assistance of some ingenious lifting device constructed by Ted Martin using his welding and construction skills. All is now working well with less vibration than before.
- 12/7 Drum Sander - The slow moving platen seems to have got caught up and torn. The damaged edge has been removed and the platen has been refitted albeit narrower than before.
- A REMINDER THAT THIS MACHINE IS A SURFACE SANDER NOT A THICKNESSER

Brian's Flow Chart that helps him in his maintenance planning....



### MAPLETON HARDWARE

Your handy hardware store.

Come in and see us for all your hardware needs.  
Hand Tools, Sleepers, Power Tools, Drill Bits, Paint and Stains.  
Plus Plumbing and General Hardware

Open 7 Days

Rob, Toni and Laurie

Cnr Obi Obi Rd & Emu Walk  
MAPLETON  
Phone 5445 7773

Shed Times 8.00 - 11.30	
Monday	General Activities
Tuesday	Turning & Carving
Wednesday	General Workshop & Toys
Thursday	Furniture & Joinery
Friday	General Activities
Saturday	General Act. & Demo's

*Rita & Chisag*  
 0412 634 675  
 07 5492 5655



## Caloundra Signs

Shopfront Signs  
 Digital Printing  
 Banners & Flags  
 Vehicle Stickers  
 Business Cards  
 Flyers  
 A-Frames  
 Window Signs  
 3D Lettering

0412 634 675  
 07 5492 5655  
  
 1/42 Allen st,  
 Moffat Beach, QLD 4551  
[www.caloundrasigns.com.au](http://www.caloundrasigns.com.au)  
[info@caloundrasigns.com.au](mailto:info@caloundrasigns.com.au)

Who's Who in BRWG Inc. 2013-14		
Patrons - Peter Wellington MP, Andrew Powell MP and Cr Jenny McKay		
President	Frank McDonald	5435 2495
Vice President	John Muller	
Secretary	Dave Edmond	5478 6932
Asst. Secretary	Jeff Harrison	
Treasurer	Brian Harris (Acting)	
Asst. Treasurer	Hugh McKenna	5476 1454
Newsletter Editors	Max Barrenger & Graeme Beaumont	0408 437 375
Website Editor	Dave Edmond	5478 6932
Publicity Officer	Gerry Zwart	5441 7433
Recruitment Officers	Dave Banister, Lionel Tilley, Tom Black, Jeff Harrison	
Activity Officers	Ray Curry, John Drew, John Clarke, Warne Wilson Dave Banister, Keith Muirhead, Brian Harris, Max Barrenger	
Safety Officers	Dave Banister, Warne Wilson	
First Aid Officer	Andrew Eberhard	
Events Organiser	Rick Vickers	5494 3555
Shed Managers	John Holland, Brian Harris	
Amenity Officer	Gill Blowers	
House Officer	Gill Blowers	
Purchasing Officer	John Holland	
Training Officer	Lionel Tilley	
Librarian	Brian Holdsworth	
Timber Management	John Holland, Frank McDonald, Ron Donald, Phil Gibson	

Shed Captain Roster - August 2014											
Monday		Tuesday		Wednesday		Thursday		Friday		Saturday	
								1	George Blowers	2	John Clarke
4	Dave Banister	5	Ray Curry	6	Leigh Boynton	7	Phil Krisanski	8	Frank McDonald	9	Keith Muirhead
11	Lionel Tilley	12	Frank McDonald	13	John Close	14	Ray Bryant	15	George Blowers	16	Graham Bradford
18	Brian Harris	19	George Blowers	20	Max Barrenger	21	John Drewe	22	Frank McDonald	23	Warne Wilson
25	John Muller	26	Tom Black	27	Hugh McKenna	28	John Holland	29	George Blowers	30	John Clarke

Shed Captain Roster - September 2014											
Monday		Tuesday		Wednesday		Thursday		Friday		Saturday	
1	Dave Banister	2	Ray Curry	3	Leigh Boynton	4	Phil Krisanski	5	Frank McDonald	6	Keith Muirhead
8	Lionel Tilley	9	Frank McDonald	10	John Close	11	Ray Bryant	12	George Blowers	13	Graham Bradford
15	Brian Harris	16	George Blowers	17	Max Barrenger	18	John Drewe	19	Frank McDonald	20	Warne Wilson
22	John Muller	23	Tom Black	24	Hugh McKenna	25	John Holland	26	George Blowers	27	John Clarke
29	Dave Banister	30	Ray Curry								