



# Flitch 'n Chips

Issue No. 226

April 2016

## Presidents Report



G'Day all Woodies,

It is indeed a busy time on our BRWG calendar. Coming up in April/May we have the Barung Chainsaw-to-Fine-Furniture Expo, the Cooroy competition, Working with Wood expo in Brisbane.

Vice President John is looking after the Maleny Expo and so far, the names on the board for helpers is a bit thin so if you can help, please put your name down; remember this year, it is 3 days so we should be able to sell a lot of extra raffle tickets. Also with the extra day, we will need a lot of extra stock to sell so this is an opportunity to move a lot of your artistic woodcrafts.

After recently seeing Greg McCosker's neat and tidy workshop with the dust control system, I have installed the Canadian made iVAC control system on my dust extractor. With a simple 4-way switch, I can now switch power from machine to machine with automatic dust extraction starting. It was just a shame it could not be purchased locally but service from Lee Valley Veritas is exceptional.

We have started a program of re-tooling our workshop. The recent management committee meeting decided to proceed with this program so from time to time, you will notice changes. A priority was to upgrade some of the clamps and two x 1200 mm clamps and 4 x 300mm quick clamps have been purchased.

Plans for extra space are well advanced, so soon we will be looking at grants to finance our expansion. When the layout drawings are finalised, they will be displayed on the notice board in the Shed.

The Wednesday afternoon opening trial is being well accepted so far and looks like it will be a permanent fixture.

Bruce Chapman and Dave Edmond emptied the kiln on Tuesday and there are good stocks of some nice Silky Oak and Camphor.

To all Woodies not feeling the best, look after yourself, get well and keep creating in wood.

Cheers,  
John Muller  
President.

**ALL ABRASIVES**  
INDUSTRIAL ABRASIVES SUPPLIER



**DAVID BLACK**  
PROPRIETOR

Phone: (07) 5443 9211  
Phone: (07) 5443 9527  
Mobile: 0413 945 798  
Fax: (07) 5443 5714  
4/20 Kayleigh Drive  
Maroochydore Qld 4558

**MALENY  
GLASS &  
ALUMINIUM**  
Robbie Palmer

**24 hour Fast Glass Replacement**

Mobile: 0427 943 733  
Phone: 5494 3733 Fax: 5494 3473  
6 Lawyer Street, Maleny



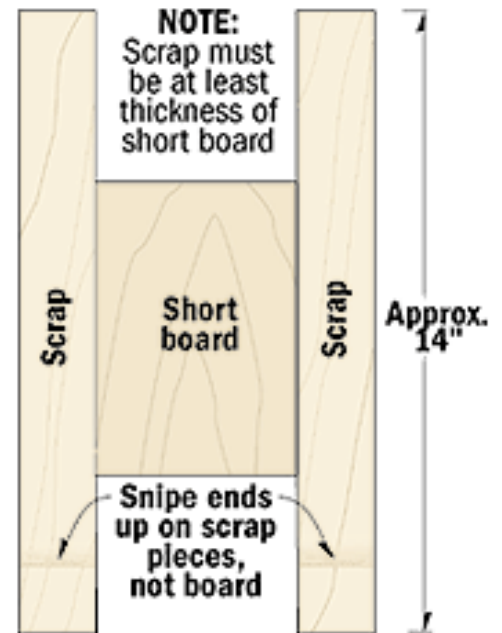
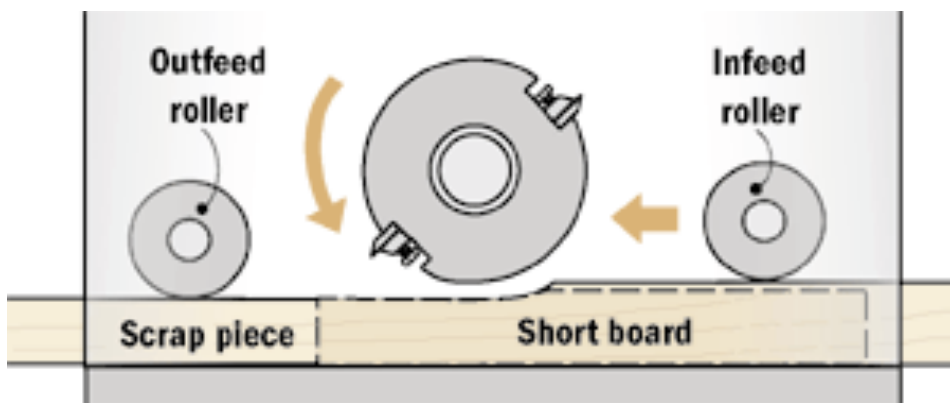
## Planing Short Boards

I can never bring myself to throw away the short pieces left over from a project. They're ideal for small projects, but they often have to be planed to thickness before I can use them.

The problem is running a board that is less than 300mm long through a planer is definitely not recommended. It can get caught between the infeed and outfeed rollers, causing it to lift off the planer bed. At best, this causes severe snipe, a deeper cut near the end of a board. At worst, the board can get chewed up, damaging the cutter head in the process.

To prevent this, I glue long, narrow scrap pieces to both edges of the short board, see drawing at right. These scrap pieces span across both feed rollers, so the board stays flat on the bed of the planer.

The result is a planed surface that's mirror smooth. If there's any snipe, it ends up on the scrap pieces, not the board. Once the board is planed to the desired thickness, just cut off the narrow scrap pieces.



## Safety Notes

By Warne Wilson and Dave Banister



Woodworking machines, wood dust, fire, noise, manual handling operations, hazardous and chemical substances, slips and trips are main causes of accidents and injuries in the woodworking industry; and therefore are constant safety concerns in our Shed.

One would think that enough has been said about safety protocols around table saws and drop saws, but saws remain a constant cause of vigilance by safety officers and senior members. Still sometimes a member will be reminded about safe working. One experienced member who spent many years in the joinery industry recently advised; "Know where your hands are." Never take your eye off the ball when a machine is running!

Wood dust is not only dangerous to health, it can be carcinogenic and in some cases allergenic, but it is also a fire hazard. We had a fire once in the drum under the cyclone and luckily someone saw it before the Shed was locked (some of the charred remains are displayed on the rogues gallery shelf above the stairs) Shed Captains remove the drum from the intake at the end of every session. We must all be vigilant about fire risk; if charred sawdust is being generated by a machine, router or power tool, stop immediately and adjust the cut!

Since the advent of spiral cutters, noise has reduced in the Shed, but even at lower decibels noise can cause hearing damage. Routers, particularly, produce high frequency noise. Many members shun the wearing of ear muffs but should be aware that ringing in the ears, tinnitus, indicates hearing damage.

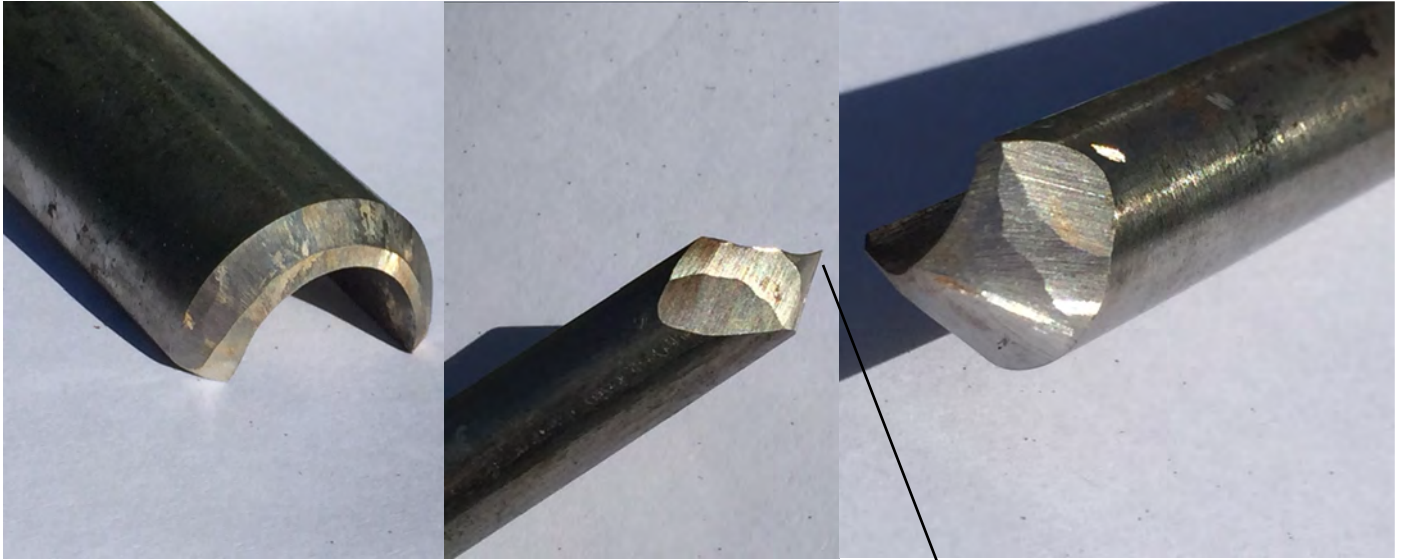
Get someone to help you if you are lifting a heavy or awkward item. The writer once lifted a table top to a bench and found himself on the floor with the table top on top of him. While this caused concern and perhaps a little amusement at the time, the others did not see the extensive bruising to ribs and an arm which appeared the next day.

Be careful with chemicals. Left over mixed two part glue from a job can heat up and cause a fire in the right conditions. Superglue can give off poisonous fumes while setting. Spray lacquer contains toluene which, if constantly breathed, can cause neurological harm.

And lastly, trip hazards. Please be aware of these silent threats. Offcuts, power leads and obstacles can be a danger; particularly to our many older members. Don't step over a hazard. Pick it up or make it safe.



## Around The Shed



The Phantom Chisel Sharpener strikes again..... see the point on this one if that dug in while someone was turning it could do lots of damage. Whoever you are, please stop ruining Club chisels....you can do this to your own tools but not the Club's. Should we have to lock the grinders and penalise everyone?

Warne Wilson constructed a jig to hold his almost finished bowl so that the base of the bowl could be finished off to a high standard. We're looking forward to seeing the finished article Warne.





**ROGER LOUGHNAN**

---

**REAL ESTATE**

Selling houses, land, farms in Maleny, Montville, Mapleton & beyond

**Ph: (07) 5478 5288**

Shop 2 / Corner Post Office Road & Obi Obi Road, Mapleton  
[sales@rlre.com.au](mailto:sales@rlre.com.au)    [www.rlre.com.au](http://www.rlre.com.au)    Open 7 Days



*The*  
**STAIR COMPANY**

A Division of Trafalgar Projects Pty. Ltd.    ACN 008 502 663

**Unit 1, 34 Page St., Kunda Park, Qld 4556**

**Tel 5445 2189**

**Fax 5445 6392**

**E. [admin@thestaircompany.com.au](mailto:admin@thestaircompany.com.au)**

**Post P.O. Box 5332 Maroochydore BC 4558**



# Celebrating International Day of Forests in Melbourne



The final hour and final photo reflect the success of the International Day of Forests celebration dinner at Cargo Hall in Melbourne on March 21, organised by Australian Forestry Standard Ltd. Joining guest speaker Senator Anne Ruston (third from left) are Ross Hampton, CEO, Australian Forest Products Association, Michael Hartman, CEO, Skills Impact, Ben Gunneberg, CEO, PEFC International, Suzanne Little, Australian Land Management Group and AFS Ltd director, Simon Dorries, CEO, AFS Ltd, Rob de Fégely, president, Institute of Foresters of Australia, and Dr Hans Drielsma, AFS Ltd founding director. Senator Ruston and Ben Gunneberg were presented with souvenirs crafted from a variety of Australian timbers.

This is an article in the Timber & Forestry E-News with presentations of wood crafts from our Club to Senator Anne Ruston and overseas guest speaker, Ben Gunneberg. The intarsia is by Brian McTaggart and the box is from Bill Rangott.

## COOROORA CLUB COMPETITION:

The categories for this competition are Cabinet Making, Pyrography, Scrollsaw Work, Carving and Turning. If you have completed a project in the last year that you would like to enter now is the time. See the noticeboard at the Shed for details.

Ron Fishwick, our coordinator, will require all entries to be submitted at the Club Shed by 10.00 on Wednesday 4th May and selection of our entries will be carried out in the afternoon, ready for transporting to Cooroy on Thursday for their judging.

Please have a look at your best work and enter in this event so our Club will be well represented. Remember we did win one year, the rules have changed slightly and we should stand a good chance this year.



## Club Events Calendar from Rick Vickers

Maleny Wood Expo - Sat 30/4 - Mon 2/5

Cooroy Wood & Craft Show - May 6&7 at 8 Lowermill Road, Cooroy.

Brisbane Working with Wood Show - 27, 28, 29 May.

Club Expo and Competition at Montville Community Hall - Thur 30 Jun to Sun 3 Jul. (judging Thursday and setting up sales tables Friday - open Sat & Sun)

Our 20 year Anniversary September 18 (details soon)

Santa Shop at St Mary's Hall Montville (in conjunction with Lighting of the Christmas Tree) - Sat 3/ Sun 4 Dec

Woodies Christmas Party - 10 Dec

## CAMPBELL'S UPHOLSTERY

Phone Fax : **5494 0133**

**Gary & Cheryle Campbell**

- Camper Trailers    • Vehicle Interiors
- Furniture Upholstery    • Boat & 4WD Canopies

Unit 7 / 47 Beerwah Parade, Beerwah 4519 Queensland

MIGHTY HELPFUL  
**MITRE 10 TIMBER and HARDWARE**

**MALENY**

*"For all your hardware needs"*

**Phone 5494 2466**

10% Discount to BRWG



## Around The Shed



Bob Callinan says of his latest creation.....

The wood is a piece of Redgum Burl supplied to me by President John, "See what you can do with this" he said. The burl had been through a fire and was well burned. The bowl area was removed with an Arborteck Planer and a Foredam Mini Grinder. Care was taken to balance the carved area and the well figured Burl surface. I made a sanding flap wheel about 100 mm diameter from cut pieces of cloth-backed sandpaper and used that in an angle grinder. Then a lot of hand sanding through the grits. Finish is 5 coats of Kunos Oil.



Jacqui Porteous has some lovely colours in her latest cutting board.



Lionel Tilley demonstrated the way to make perfect dovetails using the Gifkin Jig.

**MAPLETON HARDWARE**  
Your handy hardware store.

Come in and see us for all your hardware needs.  
Hand Tools, Sleepers, Power Tools, Drill Bits, Paint and Stains.  
Plus Plumbing and General Hardware

**Open 7 Days**

Rob, Toni and Laurie

Cnr Obi Obi Rd & Emu Walk  
MAPLETON  
Phone 5445 7773

**DIGITAL SIGNAGE SPECIALISTS**

Bruce Allen  
Director

**ATL**  
Graphix

atlgraphix@bigpond.com  
www.atlgraphix.com.au

p 07 5494 0666  
f 07 5494 0677

**ONLY LIMITED BY YOUR IMAGINATION!**



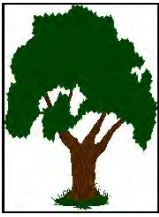


Twelve months ago I was privileged to be on board a ship re-enacting the Gallipoli landing of April 25, 1915. Leaving the port of Lemnos the evening before, as the troop ships did, we were sailing slowly towards Anzac Cove as the sun rose. To stand on that same beach a century later and gaze up at the terrain that had to be negotiated, but with a hostile enemy holding the higher ground, I was finally able to visually grasp a story that had been in my head for almost my entire life. Then to visit places like Lone Pine, The Nek, and Chunuk Bair brought those battles into perspective for me. Its no wonder a legend was born, and its no wonder that legend lives on. Max Barrenger.

Lest We Forget







# **Blackall Range Woodcrafters Guild Inc.**

## **2016 Mid Year Raffle**



**First Prize:**

**A "Woodies" Famous Silky  
Oak Squatters Chair**

**Second Prize:**

**A Hand crafted Red Cedar  
Nest-of-Tables**



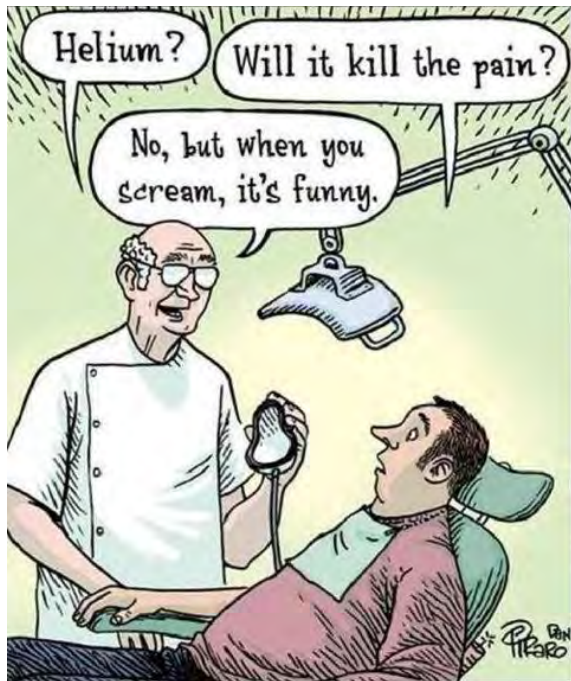
**Third Prize:**

**A Lazy Susan beautifully  
crafted from New Guinea  
Walnut and Rosewood**

**Tickets \$2 each.**

**Prizes drawn at 3pm Sunday July 3rd at Montville Community Hall during the  
2016 Blackall Range Woodies Expo**

Shed Times 8.00 - 11.30	
Monday	General Activities
Tuesday	Turning & Carving
Wednesday	General Workshop & Toys
Thursday	Furniture & Joinery
Friday	General Activities
Saturday	General Act. & Demo's



Who's Who in BRWG Inc. 2015 - 16		
Patrons - Andrew Powell MP, Mark Jamieson - Mayor SCRC and Cr Jenny McKay		
President	John Muller	0418 871 946
Vice President	John Henderson	0481 339 814
Secretary	Graham Beaumont	0449 081 092
Asst. Secretary	Dave Edmond	5478 6932
Treasurer	Brian Harris	5445 7921
Asst. Treasurer	Lindsay Thomas	
Newsletter Editors	M Barrenger, G Beaumont, T Jorgensen	0408 437 375
Website Editor	Dave Edmond	5478 6932
Publicity Officer	Trevor Jorgensen	
Recruitment Officers	Dave Banister, Lionel Tilley, Tom Black, Jeff Harrison, Frank McDonald	
Activity Officers	Ray Curry, John Drew, John Clarke, Warne Wilson, Dave Banister, Keith Muirhead, Brian Harris, Max Barrenger	
Safety Officers	Dave Banister, Warne Wilson	
First Aid Officer	John Drewe	
Events Organiser	Rick Vickers	0408 663 842
Shed Managers	Frank McDonald, Bruce Chapman(0422 927 032)	
Amenity Officer	Pat McDonald	
House Officer	Pat McDonald	
Purchasing Officer	Rob Otto	
Training Officer	Rob Otto	
Librarian	Brian Holdsworth, Max Barrenger	
Timber Management	John Holland, Frank McDonald, Ron Donald	

Shed Captain Roster - May 2016											
Monday		Tuesday		Wednesday		Thursday		Friday		Saturday	
2	Brian Harris	3	Bruce Chapman	4	AM Leigh Boynton	5	Ray Bryant	6	Dave Edmond	7	Graham Bradford
					PM Max Barrenger						
9	John Muller	10	Frank McDonald	11	AM Rob Otto	12	John Drewe	13	John Muller	14	Warne Wilson
					PM Warne Wilson						
16	Lionel Tilley	17	Greg McCosker	18	AM Phil English	19	John Holland	20	George Blowers	21	John Henderson (Soccer)
					PM Dave Southern						
23	Dave Banister	24	Tom Black	25	AM Max Barrenger	26	Spike Bettega	27	Hamish B/wick	28	Keith Muirhead (Soccer)
					PM Keith Carter						
30	Brian Harris	31	Bruce Chapman								

Shed Captain Roster - June 2016											
Monday		Tuesday		Wednesday		Thursday		Friday		Saturday	
				1	AM Leigh Boynton	2	Ray Bryant	3	Dave Edmond	4	Graham Bradford
					PM Warne Wilson						
6	John Muller	7	Frank McDonald	8	AM Phil English	9	John Drewe	10	John Muller	11	Warne Wilson
					PM Max Barrenger						
13	Lionel Tilley	14	Greg McCosker	15	AM Rob Otto	16	John Holland	17	George Blowers	18	John Henderson (Soccer)
					PM Dave Southern						
20	Dave Banister	21	Tom Black	22	AM Leigh Boynton	23	Spike Bettega	24	Hamish B/wick	25	Keith Muirhead (Soccer)
					PM Keith Carter						
27	Brian Harris	28	Bruce Chapman	29	AM Max Barrenger	30	Ray Bryant				
					PM Warne Wilson						