

PRESIDENT'S REPORT

G'day to all Woodies,

I hope you have had some of this good rain; only 80 mm at Balmoral Ridge so far, which is enough to fill our tanks and to some degree, restore the lawn to green from the shade of pale green/brown that it was.

RAY CURRY:

Ray Curry's service last Thursday was attended by a large contingent of Woodies who have many fond memories of Ray. The BRWG's showing at the service highlighted to his family and friends how well respected he was by his fellow Woodies.

NEW SHED:

Just a word on the new shed:

Our Development Application is still in limbo because of the Main Road concerns about the access at the sports grounds. A meeting was held with the Main Roads, MVA, ACI, BRWG and Cadcon (certifier acting for us) and it seems the Main Roads is adopting a very public-service negative attitude to the issue so it was subsequently decided to get the politicians involved. That process is currently underway and we will keep membership informed on progress.

GRANTS:

The application to the Justice Department Gambling Grants Fund for the second stage of the building project has been lodged and we are awaiting the results. Last week, we submitted a grant application to the Sunshine Coast Regional Council for further yard work to fill and consolidate the area at the rear of the outdoor timber rack.

On a more positive note, we were successful in achieving a grant from the Maleny Rotary for upgrading our grinding facilities. We will receive \$800 on 23rd March and place orders after that. In the upgrade, we will install a 200mm CBN wheel which I have found to be the best invention since "sliced bread". *Should modify that cliché to make it more modern; maybe substitute "internet" for Sliced bread!*

AROUND THE WORKSHOP:

Those using the workshop recently will have noticed the installation of the new router facility. Congratulations and thanks are due to the team of Robert Otto, Terry O'Connor and Bruce Chapman. This new facility will be an improvement in machining and safety.

In years gone past, when we held an open day (an event which has fallen out of favour due to the unpredictable weather here) this event was always preceded with a big effort to clean up the workshop and surrounding area. In the last couple of years, this has not happened and it is certainly now time for a serious spring, no autumn, clean.

Can you put Saturday 1st April aside for this major event. Refreshments will be provided by the Club.

Titebond II is an adhesive that is not readily available at hardwood stores and is a popular glue used at the shed. The Guild has been buying this in 375ml bottles and some members have asked to buy small quantities from the Club. Just like the Mirotone finishes, it is agreed that in future, members shall be able to purchase 500ml for \$8.00 from the Club using their own containers. See the Shed Captains.

A decision was taken at the management meeting to limit the supply of some tools in the workshop, mainly those which seem to disappear with monotonous regularity. It is reasonable to expect members to supply their own measuring and marking equipment, so the Club will not be replacing the stocks of pencils, tapes, steel rules and squares in the future. Even not-so-serious woodworkers would want their own equipment in this department.

POSITIONS VACANT:

Trevor Jorgenson and his wife have relocated to the Coast and he has to undertake some serious renovations to their new place, leaving little time to act as Publicity Officer. This leaves us short. The Publicity Officer is a very important and critical position in the Guild. Those members who would like to get more involved in the running of the club, this is your opportunity to take on an important role.

If you are interested, please contact any member of the management team who will be able to advise the duties involved.

BARUNG CHAINSAW TO FINE FURNITURE EXPO:

Don't forget to have plenty of woodcraft for sale at the Barung Chainsaw to Fine Furniture Expo on 29th & 30th of April and 1st May. There will be a list on the notice board soon calling for volunteers to assist setting up and manning the displays.

LOG COLLECTION:

A special note for the wood carvers. Wood carvers love White Beech (*gmelina leichhardtii*) and it is to say the least, pretty rare now. Whilst once common to the Blackall Range, there are only scattered trees around and the Guild has been very fortunate to be the recipient of a white beech log and some of the limbs from the biggest white beech I personally have seen. The cutting crew have cut up some of the larger chunks of the limbs while smaller limbs are "resting" in the yard awaiting carvers with creative inclinations.

On the subject of log collection, I have again been kept busy of late this month and our supplies are very good. The question has been raised whether we may have too much wood. I feel this is an enviable position to be in and if, in the future, there is too much sawn wood for Club usage, then it would be sensible to sell our surplus to other woodcraft clubs less fortunate in timber supplies than us. As an example, the Mens Shed at Woodford has expressed interest in our surplus.

MARY CAINCROSS DISCOVERY CENTRE DOORS:

Mary Caincross Doors are complete after 937 recorded man hours put in by members. They are installed and if you get the chance, a visit to the new Discovery Centre is a must. This community facility is wonderful and for the BRWG to be an obvious visual part of it is a real credit to the skills and enthusiasm of our members.

It is important to note that these doors would not have happened without the design creativity and the skill and tenacity of one David Southern. Congratulation Dave. It also has to be noted that 30 of our members gave so much time, effort and skill to this project and they too must feel very proud.

I have taken a lot of photos during the progress of the project and we are aware that others have done the same. If you have some, can you get them to our F & C's Editor, Greg McCosker so we will have a complete library for future reference.

Robbie from Maleny Glass again supported us with his delivery truck. If you need glass, it would be great to support him, after all he is local and not a bad bloke.

Congratulations are in order for Alan Heaton who turns 90 on 22nd March. Remember Alan, 90 is the new 80 so stay healthy and keep making sawdust!

We wish a speedy recovery to two members of the "A" milling team; George Blowers and Ted Martin. Get well soon fellows, as the rest of the "A" team, in your absence, have been relegated down the milling team's ranking.

To all Woodies not feeling the best, look after yourself, get well and keep creating in wood.

Cheers
John Muller, President.

Maintenance Report *by Graham Bradford*



Remember to always clean the sanding machine belts and discs during and after use.

Ensure that the dust extraction from machines is open before use.

The operating instructions posted on the Laguna bandsaw are for the benefit of all members, and must be observed to ensure reliability of this machine.

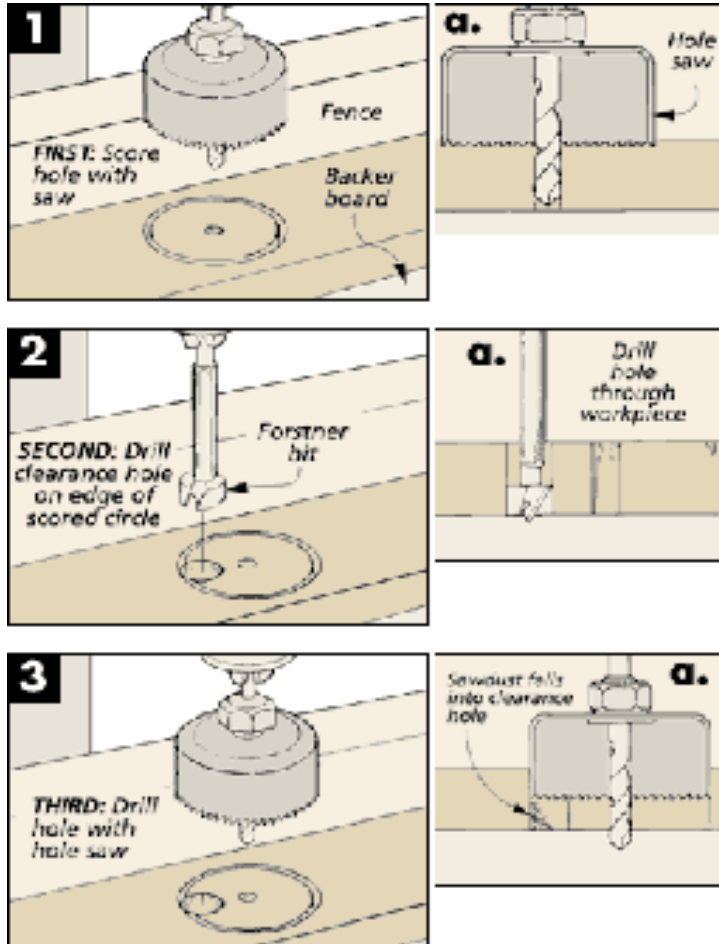
Maintenance:-

1. Replacement switch fitted to Makita 3600 router.
2. Cutter inserts on Jointer rotated.
3. Cutter inserts in 380 mm thicknesser rotated. Belt drive adjusted. Faulty stop switch replaced.
4. Repairs to blade guide rollers on Slab Saw.
5. Belt drive on Laguna saw adjusted. New blade fitted on two occasions.
6. Jet bandsaw blades repaired.
7. Adjustments to Wadkin bandsaw blade guides.
8. New blades fitted to Hafco bandsaw and 'blanks' bandsaw.
9. Sanding belt replaced on Jet drum sander on two occasions.
10. VS drives on lathes checked.
11. Jet air filter elements cleaned.
12. Damaged blade on Hammer saw replaced.

Tips and Tricks *by Warne Wilson*



With thanks to Woodsmith Magazine



I do not use a hole saw very often, but when I do the teeth clog with sawdust, heat up, start to burn the wood and lose efficiency; requiring me to pull the hole saw out to remove the packed sawdust before continuing.

But recently a friend let me in on his “secret” technique for using a hole saw.

The idea is pretty simple. First, use the hole saw to lightly score the surface of the wood and outline the hole. Next, drill a 19mm clearance hole all the way through the workpiece inside the edge of the scored “circle.” When you resume cutting with the hole saw, the clearance hole will allow the sawdust to escape the teeth. And if the saw does clog, it won’t heat up and burn the wood.

ALL ABRASIVES INDUSTRIAL ABRASIVES SUPPLIER



flexOvit

DAVID BLACK
PROPRIETOR



NORTON



3M
RESELLER

Phone: (07) 5443 9211
Phone: (07) 5443 9527
Mobile: 0413 945 798
Fax: (07) 5443 5714
4/20 Kayleigh Drive
Maroochydore Qld 4558



The most sensitive and valuable of all of our assets are our eyes. They are right in the forefront of our woodworking activities and yet we tend to ignore the danger we expose them to when we fail to protect them. We often say that when something happens with a power tool or machine, it will happen in the fraction of a second before you can blink. Any sort of a catch with a lathe tool or other machine can turn a sharp chip into a projectile. Please wear eye protection!

Machines are inanimate things, they cannot call out when you are hurting them, they do the only thing they can – they can jam, kick back, or slow down under heavy load. Please remember that our machines are friendly when treated with care and respect, but they can be fearsome when used carelessly.

Operation of the Compound Sliding Saws:

Operation of these machines is potentially a hazardous operation requiring additional care and attention to complement the operating instructions. If unsure, consult the Shed Captain or an experienced member, particularly if you wish to make mitre or bevel cuts.

Some timbers carry stress which is released when the timber is machined, resulting in unpredictable movement. This is particularly relevant to timber which is not fully dried, or warped.

The inherent problem with use of the compound sliding saw is closure of the sawn gap on to the saw blade as the cut progresses. This results in a violent and sudden reaction which can cause injury and/or damage to the machine.

The critical rule for safe operation is, there must be no impediment to the movement of the 'offcut', as will happen if a concave edge is forced against the fence, or, in the case of a warped piece of timber there is an upward force from the base plate. As the cut progresses the 'offcut' must be free to fall away without binding on the saw blade.

A workpiece must be firmly held in place by the clamp. It is an extremely unsafe practice to hold a workpiece in the compound saw by hand; an unsecured workpiece will increase the chance of an accident. If the workpiece is not long enough to be clamped – Find another way to cut it!

Problems will be minimised by adopting the following practices.

1. If a straight timber edge cannot be presented to the saw fence, place a spacer piece between the timber and the fence to give the 'offcut' clearance against the fence. This will minimise the sawn gap closing on the saw as the cut progresses.
2. If the workpiece is curved, clamp it so that the 'offcut' curves upwards from the base plate. This allows the 'offcut' to fall away and not jam the blade as the cut progresses.
3. With a larger workpiece, use an additional G clamp to secure it to the bench.
4. Feed the saw into the workpiece at a slow rate.

And lastly; we are all human and we all make mistakes. If you damage a machine, please tell the shed captain for the day, he will not eat you; he will be pleased that you told him and he will be interested to know what happened.

Club Events Calendar *from Rick Vickers*



Shed clean up - 9am Saturday 1 April, 2017

Demonstration of new router by Rob Otto - Saturday 22 April, 2017

Special opening of Mary Cairncross doors for all Woodies - Monday 24 April 2017

Maleny Wood Expo - Saturday 29 April, Sunday 30 April & Monday 1 May, 2017

Woodies General Meeting - 8.30 am Saturday 15 July, 2017

Back to Basics

Sometimes it is easy to overlook the basics; where we came from, and where we are going. First and foremost, we are a Guild engaged in numerous wood working disciplines, which we need to showcase. So, from now on, we will have a section dedicated to the work turned out each month by Members. ALL Members, from beginners to seasoned producers, are invited to submit photos of their current pieces. If you are shy, ask the Shed Captain to take a photo for you, or email your photos to : newsletter.brwg@gmail.com.

Around the Shed



Who would have guessed Hamish did an apprenticeship with the Council ?



The Mary Cairncross doors have been completed, and installed, and what a fantastic outcome. The Guild can feel rightly proud to have such craftsmen in our midst, and a hearty thank you to all involved



Maleny Library offered us the opportunity to display our wares in the front foyer throughout March, leading up to the Wood Expo. Thanks to those Members who contributed.



Sarah very bravely participated in the World's Greatest Shave to raise funds for the Leukaemia Foundation. Her efforts contributed around \$2,500, and as she surpassed her limit of \$2,000, not only did she lose her hair, but her eye brows as well (\$250 / eyebrow - not bad).

Definitely deserves acclamation from her fellow Woodies, and thanks to those who made pledges.



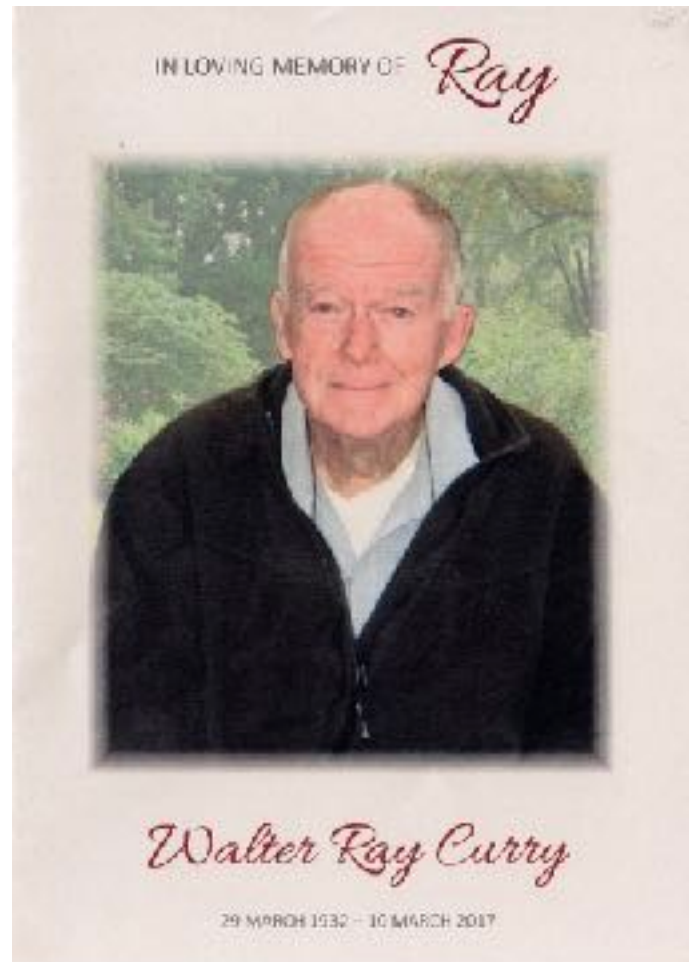
Vale Ray Curry

It is with great sadness that we advise you that Ray Curry passed away on Saturday 11 March.

Ray was a great stalwart of the BRWG as a foundation member and a very active member of the Guild up until recently. His woodwork will remain as a true testament of his skill, and dedication to his love of making sawdust and wooden articles of value.

A lot in the Guild will remember him for his willingness to help.

God bless you, Ray.



On a lighter note :

Jack walked into a doctor's office and the receptionist asked him what he had. Jack said, "Shingles." So she took down his name, address, medical insurance number and told him to have a seat.

Fifteen minutes later a nurse's aid asked Jack what he had. Jack said, "Shingles." So she took down his height, weight, a complete medical history and told Jack to wait in the examining room.

A half-hour later a nurse came in and asked Jack what he had. Jack said, "Shingles." So she gave him a blood test, a blood pressure test, an electrocardiogram, and told Jack to take all his clothes off and wait for the doctor.

An hour later the doctor came in and asked Jack what he had. Jack said, "Shingles." The doctor said, "Where?" Jack said, "Outside on the truck. Where do you want 'em?"

Innovation Corner



If you need any of these Special Fasteners for your project, please advise the Purchasing Officer (and I hear some are available in left hand thread, but will require a left hand spanner)

Extensive Range
Top Overseas Brands

10% OFF

For BRWG Members*

*Excludes online orders
**Further conditions apply

Timbecon
Everything to get wood working

timbecon.com.au

WA / 31 Canola Rd, Cannington 6108
VIC / 180/96 Newbold Blvd, Traralgon 3833
TEL 1300 802 996 | sales@timbecon.com.au

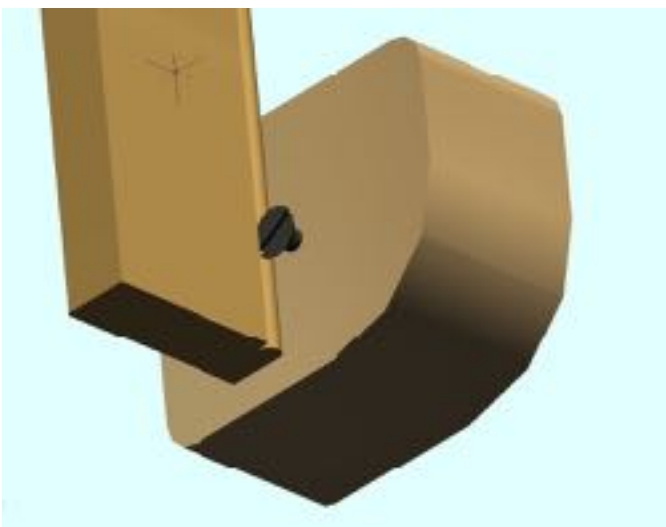


WOODPECKER ACCUTRAX PENCIL BLADE

This is the best thing that has happened to a Utility Knife since a sharp blade! The new Accutrax Pencil Blade is not a razor, it is a carbon fiber reinforced graphite blade used for marking. Imagine drawing hundreds of razor sharp lines, 0.025"/0.635 mm wide to be exact, with the same pencil and never having to sharpen it!

From Graham Beaumont -

"In response to the Innovation Corner, I saw this little gem on the Paul Sellers You Tube channel. It's a beading tool using a scrap piece of wood and a flat head screw. The sharp edge caused by the flat screwdriver inserted in the head of the screw acts as a cutting edge, and the bevel of the screw head bruises the wood to the shape of a bead. I have done a quick sketch in AutoCAD to demonstrate".



A Division of Trafalgar Projects Pty. Ltd. ACN 008 502 663

Unit 1, 34 Page St., Kunda Park, Qld 4556

Tel 5445 2189

Fax 5445 6392

E. admin@thestaircompany.com.au

Post P.O. Box 5332 Maroochydore BC 4558

Following on from Graham's very informative paper on band saws, setting the blade tension is one of the issues some struggle with. This new tool could help :



Monarch Industrial has just launched a new product that is the answer to the most-often asked question in bandsaw setup. How do you accurately adjust the tension on your bandsaw blade? With the release of its new Tension Gauge, Monarch introduces bandsaw precision. Every woodworker now has the ability to set the perfect tension in his or her blades, and that's way better than the on-board gauges found on most bandsaws.

Clip the Monarch Tension Gauge onto your bandsaw blade, and you immediately know the blade's tension. That allows you to tweak the tension to perfection. You need to pay close attention as you position the gauge so that you stay off any teeth – it's better to allow the pins to rest on the body of the blade if possible, or in the gullets of the blade if it's narrow.



**MALENY
GLASS &
ALUMINIUM**
Robbie Palmer

24 hour Fast Glass Replacement

Mobile: 0427 943 733
Phone: 5494 3733 Fax: 5494 3473
6 Lawyer Street, Maleny

Timber Tales by Bruce Chapman

The kiln has been unloaded with the timber now being allowed to stabilise on the floor outback. The timber will be placed in the racks for sale before the end of the month. Silky oak and Camphor Laurel again make up the bulk of the timber. The silky is much needed as nearly all of the last load of silky has been sold.

The timber placed in the kiln is also predominantly our main stays of silky oak and camphor but some of the other timbers are now moving along. Some Hoop pine, Dutch Elm and Black Wattle have also been loaded.

When selecting your timber from the rack check the grain orientation if you are going to join boards. Avoid joining boards of different grain such as a quarter-sawn to a back-sawn edge. The two different orientations cup the boards in different directions.

New wood which is near the bark moves more than the old wood near the centre pith. Therefore when joining quarter-sawn boards you should join new wood (bark) to new wood and old wood (pith) to old wood.

For the carvers to keep in the back of their mind for the future. A trailer load of Beech has been stacked for air drying. It consists of some whole limbs, some cut slabs mostly 60mm thick and some 30mm boards. It will be a long time before the limbs and slabs are dried but the 30mm boards will be moved through the kiln. At present this will be 4 months of air drying outside and 6 weeks to 2 months in the kiln. There are more Beech slabs yet to arrive at the club.

Due to inherit a furniture factory when his sickly, widower father died, Clyde decided he needed a woman to enjoy it with. Going to a singles' bar, he spotted a woman whose beauty took his breath away.

"I'm only an ordinary man," he said, walking up to her, "but in just a week or two, my father will die and I'll inherit a 20 million dollar business."

The woman went home with Clyde, and the next day she became his stepmother.

Did you know ????



If you enjoy fishing, but your wood working is taking up all your time, this may be the answer.

Do you feel like the older you get the less time you have ? Apparently the feeling is real — *but it is all in your head.*

When you are young, the days seem to last forever. But as our lives get busier, the feeling that life is passing you by becomes more and more prevalent. "When we are young, we have a lot of firsts," psychologist Meredith Fuller told [ABC Adelaide's](#) Afternoons program. "We have less time on the planet to anticipate it, so it feels like we are waiting a long time [for things to happen]." As we age, we experience more, and major events begin to take prime position in our memory.

"Very key things are emotionally charged, and it does feel like yesterday because it is significant to us," she said.

Everyday events mostly go unnoticed. "We become so overstressed that our bodies don't register time," Dr Fuller said. She said many in the modern world struggled with living in the moment. "If we don't learn some mindfulness and a way to be in the moment, it really does feel as though time is just racing by," she said. She said the art of slowing down and not multitasking as often was a way to claim back time. "When we notice all the little bits and pieces that are going on around us, we elongate time," she said.

Dr Fuller also recommended doing simple things such as breathing slower and taking the time to notice how your body was feeling and reacting to things. She said being relaxed and living in the moment could help people enjoy and savour life more.

Dr Fuller said it was not uncommon to return from holidays feeling as though the days were longer. "When we are on holidays, all of our senses are on high alert," she said. "We are far more aware of what is going on internally and externally." The routine of our day-to-day lives is also changed when on holidays, stimulating the body with new experiences. "It is really important to always be curious in life and always look for a new or different way of experiencing other people or investigating life," Dr Fuller said. She said by experiencing new firsts and slowing down to notice everyday events, childhood curiosity can be reignited and quality time can be found.

"The slower we take it, the more we notice; the more we notice, the more interesting it becomes and the more time will elongate," she said.

Callers to ABC Adelaide, meanwhile, offered another explanation for the feeling. If a person's life is converted to numbers, they said, at the beginning, you have more time and less at the end. Therefore, by percentage, time diminishes quicker towards the end of your life.

Babies are born without kneecaps. They don't appear until the child reaches 2 to 6 years of age.

February 1865 is the only month in recorded history not to have a full moon.

In the last 4,000 years, no new animals have been domesticated.



President	John Muller	0418 871 946
Vice President	John Henderson	0481 339 814
Secretary	Graham Beaumont	0449 081 092
Asst. Secretary	Dave Edmond	5478 6932
Treasurer	Brian Harris	5445 7921
Asst. Treasurer	Lindsay Thomas	
Newsletter Editors	Greg McCosker, G Beaumont	
Website Editor	Dave Edmond	5478 6932
Publicity Officer	Trevor Jorgensen	
Timber Management	John Holland, Ron Donald, Bob Rothwell. Bruce Chapman	
Safety Officers	Dave Banister, Warne Wilson	
First Aid Officer	John Drewe	
Events Organiser	Rick Vickers	0408 663 842
Shed Managers	Graham Bradford, Bruce Chapman(0422 927 032)	
Amenity Officer	Hamish Borthwick	
House Officer	Jan Clements	
Purchasing Officer	Rob Otto	
Training Officers	Sarah Odgers, Nigel Cundy	
Librarian	Brian Holdsworth	
Recruitment Officers	Dave Banister, Lionel Tilley, Tom Black, Jeff Harrison, Dave Edmond.	
Activity Officers	Ray Curry, John Drew, John Clarke, Warne Wilson Dave Banister, Keith Muirhead, Brian Harris, Max Barrenger	

MIGHTY HELPFUL
MITRE 10 TIMBER and HARDWARE
MALENY
"For all your hardware needs"
Phone 5494 2466
10% Discount to BRWG

Monday	General Activities
Tuesday	Turning & Carving
Wednesday	General Workshop & Toys
Thursday	Furniture & Joinery
Friday	General Activities
Saturday	General Act. & Demo's

Shed Captain Roster - April 2017

Monday		Tuesday		Wednesday		Thursday		Friday		Saturday	
										1	Keith Muirhead
3	Brian Harris	4	Bruce Chapman	5	AM Max Barranger PM Max Barranger	6	Ray Bryant	7	Dave Edmond	8	Graham Bradford
10	John Muller	11	Dave Southern	12	AM Leigh Boynton PM John Henderson	13	John Drewe	14	John Muller	15	Warne Wilson
17	Lionel Tilley	18	Greg McCosker	19	AM Rob Otto PM Keith Carter	20	John Holland	21	George Blowers	22	John Henderson
24	Dave Banister	25	Tom Black	26	AM Max Barranger PM Warne Wilson	27	Spike Bettega	28	Hamish Blwick	29	Keith Muirhead

Shed Captain Roster - May 2017

Monday		Tuesday		Wednesday		Thursday		Friday		Saturday	
1	Brian Harris	2	Bruce Chapman	3	AM Leigh Boynton PM John Henderson	4	Ray Bryant	5	Dave Edmond	6	Graham Bradford
8	John Muller	9	Dave Southern	10	AM Rob Otto PM Keith Carter	11	John Drewe	12	John Muller	13	Warne Wilson
15	Lionel Tilley	16	Greg McCosker	17	AM Max Barranger PM Warne Wilson	18	John Holland	19	George Blowers	20	John Henderson
22	Dave Banister	23	Tom Black	24	AM Leigh Boynton PM John Henderson	25	Spike Bettega	26	Hamish Blwick	27	Keith Muirhead
29	Brian Harris	30	Bruce Chapman	31	AM Rob Otto PM Keith Carter						