

Issue No. 240
June 2017



PRESIDENT'S REPORT

G'day to all Woodies,

JULY EXPO & COMPETITION:

It is getting close! Our July Expo and Club Competition. We encourage all members to participate in the competition with your best work and please don't think "Oh, my work is not good enough!" Our competition allows each member to bring forward their work and receive an honest and professional critique by the judges so we can improve what we do. Sometimes the only way to achieve the best one can do is to be subjected to honest evaluation by one's peers.

The format will be the same as last year; entries in on the Thursday before the expo at the Expo venue, this year at the Montville School Hall. Set up for the expo will be on the Friday. Greg McCosker is the competition coordinator and has offered to be the Expo Coordinator as well if no one else steps up to the plate. This is a big undertaking and he will appreciate any help he can get especially considering this year is a new untried venue. I am sure Rick will be around to look over his shoulder.

EQUIPMENT USE:

At the recent management meeting, an amendment to the Shed Captains Duties was passed by the committee which gives Shed Captains the authority to stop unsafe **AND INAPPROPRIATE** use of Club equipment.

It is felt by members responsible for the maintenance of our equipment, and indeed absolutely fully supported by all the Management Committee, that some members, apart from sometimes stepping outside the safe use of our equipment, are using the machinery inappropriately. Sometimes these actions may not be unsafe but will cause maintenance issues and costly repairs which are in the main avoidable and an unnecessary cost to the club. Unnecessary repair and maintenance is unfair on those responsible for fixing breakdowns as it takes time which could well be better spent on their own woodcraft.

The amendment is asking Shed Captains to:

- Identify when a member is not using any of the Club's equipment both safely and correctly.
- Stop the member immediately such misuse is observed.
- Show the Member how to carry out the correct use of the equipment, either by the Shed Captain or an accreditation officer relative to the piece of equipment in question.
- Test the Member on use of the machine after tuition.
- Report any such incident in the Day Diary for action by the Management Committee.

The Management Committee understand the Shed Captain on some days is very busy and cannot be everywhere however I have strongly emphasised "The Shed Captain is the BOSS on their rostered days!". Each shed Captain who has to take action in relation to misuse of the Club's assets will have the full support of the Management Committee.

I am sure all members can see the sense in adopting these procedures, which in the long run will benefit all members whilst protecting the Club's assets.

MACHINERY REPLACEMENT:

We have two new machines on order; a new bandsaw and a new 310 mm jointer.

The reasons for the bandsaw replacement is to improve the quality of bandsaws while "pensioning" off the oldest. The new saw will have a deeper cut and larger throat.

Regarding the jointer, there is nothing wrong with our 200 mm jointer; I believe it to be a very good machine, particularly with the spiral cutters. At this stage, it will be kept and stored for reinstalling at a later date when the room is available. Management committee members feel that a 310 mm jointer is a better option to better utilise the wide board stock being cut on the band mill. Members now try to straighten wide boards through the thicknessers with limited success. The only other option to straighten wide boards is to use the Woodwiz. The in-feed and out-feed tables on this new jointer are shorter than the 200 mm machine however it is possible to straighten boards up to our maximum length of 2.5 M.

NEW SHED:

I really do not want to talk about it! But I have to.

The road block caused by the Main Roads Department is proving to be a major one, even maybe a threat to any future development on the entire site. At the moment, we have withdrawn our planning application through the State Planning Authority and are exploring the option of only dealing with the Council Planning Department. In essence, we are dealing with State bureaucrats who are intent on protecting their backsides only, with scant regard for the community needs. Fingers crossed this next avenue will provide some light at the end of the tunnel.

HOLIDAYS:

As indicated in the last F & Cs, Lorraine and I are on holidays, a caravan trek to Broome where we will meet our daughter and her family for a week on Cable Beach, watching the sun setting over the Indian Ocean at beer-o'clock. As I write this, we are in a nice park in Katherine and have had a very enjoyable trouble-free trip thus far.

To all Woodies not feeling the best, look after yourself, get well and keep creating in wood.

Cheers
John Muller
President.

A carpenter, electrician, and plumber working on a job together noticed that the foreman always left a couple of hours early on Tuesdays and Thursdays. Since he never came back to the job site they decided the next Tuesday to leave a few minutes after the foreman had departed. The electrician headed for the golf course, the plumber decided to take in a movie, and the carpenter decided to go home and relax. When he entered his house he heard noises coming from the master bedroom. Quietly opening the door he was shocked to see the foreman in bed with his wife, so he backed away and left the house. During the first coffee break the next Thursday the other two guys asked him if he was into leaving early again. "No way," he exclaimed, "Last time I almost got caught."

Maintenance Report *by Graham Bradford*



Makita compound saw dismantled to investigate stiff movement. Sliding bearings cleaned and lubricated.

Broken blades on Laguna saw replaced. Damaged ones repaired where possible.

Table alignment on Wadkin saw adjusted to 90°. Shed Captains must ensure machines are reset to normal position after non standard cutting.

Domestic water pump repaired by agent due to pressure switch fault.

New abrasive belts cut for the Drum Sander.

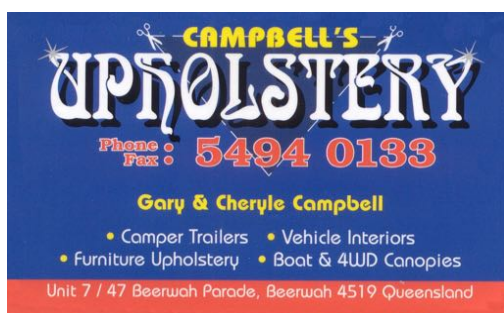
N.B. All members should note that over the last three weeks, four blades have broken on the Laguna bandsaw, due to over tension of the blade or operating with the upper blade guide set too high. This is a poor reflection on the woodworking skills which we promote, and an avoidable cost to the Guild.

Shed captains must supervise the use of this machine more diligently.

Charge for use of the Laguna bandsaw has been increased to \$2/10 minutes.

From the Editor

Earlier this month, the maintenance regime below was forwarded to members, which involves routine daily and weekly maintenance required to keep our valuable equipment functioning efficiently and safely. It is critical that all members familiarise themselves with what is required each day, and on the day you attend the shed, check the list which is displayed in the shed, and offer your assistance to the Shed Captain to ensure it is done. Members are not asked to do any technical maintenance, which is performed by specialists. Learning how the machines work, and being able to maintain them, is very rewarding. If you want to have serviceable equipment, available to all members, please get involved. If you do not understand what is required, please ask and you will be given training.



Equipment Maintenance Regime

Daily

Fein dust extractor : Empty cyclone bin, check dust collection bag and change as needed, remove and clean Hepa filter;

Ozito dust extractor : Check dust collection bag and change as needed;

Belt & disc sanders / linishers : Clean abrasive surfaces with cleaning blocks, remove all dust & debris from machines.

Weekly

Monday : Hammer & Woodman saws : Remove all saw dust and offcuts from cabinets, clean table surfaces as needed and apply Silber Gleit, check for free movement of rise and fall mechanisms, clean and lubricate as needed;

Tuesday : Lathes : Remove all debris from machines, clean rails as needed and apply Silber Gleit, empty rubbish bins in to wheelie bins, empty wood waste bins, take rubbish bins to roadside for emptying;

Wednesday : Five bandsaws : Remove all saw dust and debris from machines and wheel guard enclosures, clean table surfaces as needed and apply Silber Gleit;

Thursday : Jointer & two thicknessers : *Remove all debris from body, clean table surfaces as needed and apply Silber Gleit, check jointer fence for square;*

Friday : Mitre & drop saws : Remove all debris from machines, mitre saw enclosure, and drop saw station, check operation of mitre saw extension slides and clean as needed, empty wood waste bins.

ALL ABRASIVES

INDUSTRIAL ABRASIVES SUPPLIER



DAVID BLACK
PROPRIETOR

Phone: (07) 5443 9211
Phone: (07) 5443 9527
Mobile: 0413 945 798
Fax: (07) 5443 5714
4/20 Kayleigh Drive
Maroochydore Qld 4558



MALENY
GLASS &
ALUMINIUM
Robbie Palmer

24 hour Fast Glass Replacement

Mobile: 0427 943 733
Phone: 5494 3733 Fax: 5494 3473
6 Lawyer Street, Maleny



ABOUT BATTERY DRILLS: Their use when driving screws. “What?” You may say, “Just drive ‘em in. If the wood cracks drill a hole or try another spot.”

In soft wood, such as pine, you might get away with it, but the harder the wood, the more careful you will have to be.

Wood screws come in a variety of types: Phillips head, Slot head, Square drive, Countersink, Round head, Wood thread, Long thread, Bugle head, Hardened, Galvanised, Stainless steel, Self-drilling, and many others. However, for today I will concentrate on the woodies favourite, the Phillips head countersink wood screw. These screws are generally gold coloured metal surfaced to resist corrosion and hardened to resist driving stress. The countersink head is in the form of a truncated inverted cone, designed to be driven below the surface of the wood to enable filling and finishing. The Phillips head, cross type slot accepts the Phillips driver, either hand driven or drill driven. If you have ever tried to drive a plain slot headed screw with a battery drill, you will know that it is impossible to stop the driving bit skidding out of the slot and damaging your beautifully sanded project.

Next, if you look at one of the woody’s favourite screws (above) you will see a smooth shank below the head, and then the sharply cut spiral thread which diminishes down to a sharp point. The smooth shank is designed to rotate in the upper component of the two parts you are joining while the sharp thread winds down into the lower component to act like a vice, pulling the two components together.

NOW! This design will only work properly if you drill two holes: One large enough in the top component to allow the smooth shank to rotate without binding, and the second, down into the lower component to assist entry of the screw but small enough to allow the sharp thread to cut its gripping path into the wood. **TIP:** Drill through both components with the small drill bit, then the top component with the larger drill bit which will follow the smaller hole, using it as a pilot hole. The head of the screw is often countersunk below the surface of the top component by using a countersinking bit, which will widen and deepen the surface hole enough to accommodate the head of the screw. **TIP:** Make the seat for the head of the screw with your countersinking bit before you drill, this will eliminate unsightly tear out. Those with a technical bent can look up tables of millimetres or thousandths of an inch when selecting the drill bit for the lower hole, but as woodies we don’t go to that extreme; we simply hold a drill bit up to the light with the screw behind it. If we can see the screw thread projecting beyond the bit, that will be the right sized bit.

Again, when working with pine and other softwoods many woodies take short cuts (and risks of splitting and other problems) by driving screws without “messing about” with drill bits. Take the time to do it right and the quality of your work will benefit. In hardwood, of course, you will not get far if you do not drill first.

A COUPLE OF LAST TIPS. Battery drills often have two or three speeds; select the slowest speed for driving screws. You will feel the screw bite home and you will avoid the Gatling gun rattle of the driver bit jumping out of its slots. However, if you set the clutch, the ring with the numbers on it at the front of the drill, to the appropriate tension, usually found by trial and error, a rapid succession of clicks will tell you to stop driving. Lastly, if you are screwing into hardwood, or even softwood, a spot of lubricant will work wonders. A drop of oil, even cooking oil, a touch of wax, or draw the screw thread across a block of soap. I keep a little jar of motor grease handy, I often dip the tip of a screw in this.

Safety Notes *by Warne Wilson and Dave Banister*



Save face! How many times have we seen members avoiding use of the acrylic face guards? Particularly on the lathes, but during any process where a bit of flying wood could make a Woodie's face look as though it had been hit with a brick. Sorry to be dramatic but the face guards were purchased for your use. By avoiding them you may lead yourself into lingering regret.

Eye protection should go without saying; we tend to take our eyes for granted, but imagine how the loss of sight of an eye through carelessness would affect your world. With high revving tools a flying chip of wood could damage an eye in a microsecond, quicker than you could blink.

A caution about cold weather clothing. A club member reported that his loose jacket sleeve caught on the blade guard when he was using the Hammer saw. Fortunately, he was able to release it before anything happened, but this thoughtful member reported the incident because, with the onset of winter we all wear heavier clothing and jackets and jogger tops are common. In industry, many a gruesome injury has been attributed to a worker getting clothing caught by a power tool or machine. Make it a habit to be certain that no part of your clothing is loose enough to get caught.

Wear safety gear. It distresses us to see a member using a power tool such as a router, power saw or other high decibel emitting equipment without ear and eye protection. (The little trimmers are the main culprits) The standard answer from an older member when reminded about noise is "My hearing is shot anyway and I never bother." Surely whatever is left of damaged hearing should be protected warily from deteriorating further?

Do not lift an item that is too heavy for you – do not be afraid to ask someone to help, that's what we all do in the shed – we help each other.

Club Events Calendar



Thursday 29 June 2017 - Club Competition judging
Friday 30 June 2017 - Set-up for Sales Expo
Saturday 1 July & Sunday 2 July 2017 - Sales Expo

General Meeting & Management Committee diary :

10th June 2017
8th July 2017
12th August 2017AGM included
9th September 2017
14th October 2017
11th November 2017.....General meeting included
9th December 2017
13th January 2018
10th February 2018.....General Meeting included
10th March 2018
14th April 2018
12th May 2018..... General meeting included

Around the Shed



Cabots, a long standing manufacturer of an excellent range of stains, varnishes, oils, clear finishes and paints, has very generously offered to supply all finishing materials to the Toys Team for the Christmas Toys. Fiona Dawson of Cabots presented the first supplies to Toys Team Leader Don, with John Brown of Mitre 10, who is facilitating the supply of materials. A very big thanks to Fiona and John.



Hamish made a number of tables and solitaire boards, and Brian McTaggart made puzzles, for use in the Selangor Private Hospital Rehabilitation Ward, which have proved to be very successful in the rehabilitation programs for stroke sufferers. Great community effort there boys, which is much appreciated by Selangor staff, and the patients.

#####

Some months back, we announced that Timbecon in Melbourne would provide a ten percent discount on purchases. The arrangement was that members had to call one staff member, with whom the deal had been organised, to secure the discount, as their online sales portal would not accommodate it. Timbecon has now updated their website, so orders can be placed online, by using the Guild Code, **BRWG10**. The minimum order is \$10, and some brand lines are excluded. Timbecon offer highly competitive freight charges.

A promotional banner for Timbecon. The background shows a person's hands working with wood. The banner features a large "10% OFF" in white on a dark green background, with "For BRWG Members" below it. To the right, it says "Extensive Range Top Overseas Brands*" and "ONLINE ORDERS Code BRWG10". The Timbecon logo is prominently displayed with the tagline "Everything to get wood working". At the bottom, the website "timbecon.com.au" is listed along with addresses in WA and VIC, and contact numbers and email.

Timber Tales by Bruce Chapman



This month we managed to cut the largest log we have ever received. It was a beautiful Crows Ash log from Flaxton, coming in at 2500 mm in length, and 600 mm diameter. It was a challenge to get it on the mill, and we had to use bars to assist the winch. The image shows us slabbing it down until it was light enough to roll it over. The log has produced a good quality and quantity of timber, which is now air drying.

We continue to get some variety in the timber donated. We just cut what the donor called a Himalayan flame tree. I have labelled the cut wood as such but a google search does not give any result. So it is unknown. Regardless, the green cut timber looks interesting. The first log was all white timber, but the second larger log from closer to the ground had a nice brown tan centre. Looked like a tree within a tree. We have three more logs of this timber to cut.

By the time you read this the kiln will have been emptied. I will be resting the timber for a couple of weeks before adding it to the racks. The moisture content on the surface of the timber is reading near zero so it will be absorbing moisture from the atmosphere and needs to be stabilised before use. The bulk of the the black wattle and some more Dutch elm will be available in this load.



Brian McTaggart gets some strange requests for commissions from time to time and following on from the display case for a Samurai Suit of Armour, this one takes the cake. Staff of XY Company have a retiring boss who is an avid "Batman" fan. You know, the comic-book hero that dresses as a bat, jumps off tall building and drives a flash car.

They wanted a coffee table in the shape of the Batman logo and with the last four pieces of Wenge that Brittons had, the creation shown in the photo was made. The Boss is in Sydney so these dedicated staff drove it half way to Sydney and meet another staff member to complete its journey to Sydney for the presentation.



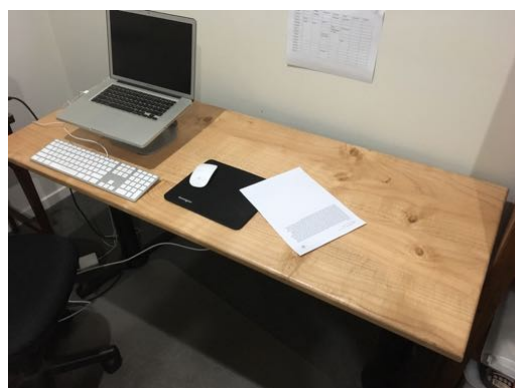
As artisans making the table, one gets that warm inner-glow from being a part of this story. All Brian has to do now is to stop worrying about breaching copy-right.

“Several weeks ago I embarked on a project to build a study desktop for my wife as a birthday gift. I was relatively time poor as we were going away for a few weeks in the middle of the project time but nevertheless thought I would give it a crack.

I am an "occasional woodie" and in the 12 months odd that I have been a member only get to the shed about once a month. Add to that my "craft skills" are mid range and the challenge increases.

But thanks to my fellow woodies the project was completed and handed over to my wife. In particular I would like to thank: Spike - assisting with timber selection; John Muller - training on the domino; Terry O'Connor - gluing and clamping; Graham Bradshaw - routing; Dave Bannister - final finish.

There were many others who gave assistance along the way - I guess my message is that the Guild is a very supportive group of people who are happy to stop what they are doing and assist other members.” Neil Stenhouse



Innovation Corner



The MiteriX Angle Duplicator is an ingenious tool that does the math for you. You measure the angle, lock it in, disengage one half of the MiteriX and transfer that to your Miter Saw or Miter Gauge on your Table Saw. It's truly that easy. So no matter what the angle is (anywhere from 0-180 degrees), or if it is an inside or outside corner, this tool will give you the true physical measurement that you need to make, gap free, perfecting mating corners in much less time and with much less frustration!

Did you know ????

There are companies who will build a medical device (called the "Tricorder" from Star Trek) that works with your mobile phone, which takes your retina scan, your blood sample and you breath into it. It then analyses 54 bio-markers that will identify nearly any disease.. It will be cheap, so in a few years everyone on this planet will have access to world class medical analysis, nearly for free. No more sitting in waiting rooms ?

Luigi, a perpetual bachelor, owned one of the biggest and fastest-growing furniture manufacturing shops in Brisbane. Friends convinced him that he needed to take a trip to Italy to check out the latest trends there, and maybe he could meet an available young Italian woman at the same time.

As he was checking into a hotel he struck up an acquaintance with a beautiful young lady. She only spoke Italian and he only spoke English--neither understood a word the other spoke. So he took out a pencil and a notebook and drew a picture of a taxi. She smiled, nodded her head and they went for a ride in the park. Later, he drew a picture of a table in a restaurant with a question mark and she nodded. So they went to dinner. After dinner he sketched two dancers and she was delighted. They went to several nightclubs, drank champagne, danced and had a glorious evening. It had gotten quite late when she motioned for the pencil and drew a picture of a four-poster bed. He was dumbfounded. To this day he says he's never been able to understand how she knew he was in the furniture manufacturing business.

The Life and Times of

Not many of us get to 87 and decide to write a book, and self-publish it, but that is exactly what Edsel Ward did, to reflect on his decision to "Give it a go". in 1960, Edsel and his friend Keith Basset decided to travel overland from Ceylon, up the east coast of India, with detours into Nepal Darjeeling and Katmandu, across northern India Benares and Lucknow, into Pakistan and the Afghan border, across Persia, Isfahan, Qom and Tehran, then Turkey, to Istanbul, and later, from there across Europe, riding as driver and pillion passengers on a Japanese 'Rabbit' motor scooter, christened 'Mirrabooka', an aboriginal word for Southern Cross. The journey took 12 months, and 24,000 miles. Following are excerpts from the book (copies of which are available in the shed for sale).

"I ROLLED AS I HIT THE GREASY ROAD. STAGGERING TO MY FEET, I SHOOK MYSELF TO MAKE SURE I WAS ALL IN ONE PIECE AND THEN LOOKED ROUND TO SEE HOW KEITH HAD FARED. HE WAS JUST GETTING TO HIS FEET AND WAS HOLDING HIS WRIST, TRYING TO EASE THE PAIN OF A FRACTURE. AS PILLION PASSENGER HE HAD NOT BEEN ABLE TO MAKE A FREE ESCAPE FROM THE SKIDDING SCOOTER AND HAD TAKEN THE FULL IMPACT ON HIS LEFT ARM.

THE SCOOTER LAY ON ITS SIDE JUST OFF THE ROAD IN A DEEP GUTTER OF GREASY LOAM. GEAR WAS STREWN ABOUT AND THERE WAS A STRONG SMELL OF PETROL IN THE AIR. I HELPED KEITH TO THE ROADSIDE AND SAT HIM ON A LOG JUST AS DOZENS OF WILDLY EXCITED, DARK BROWN LOCALS, CLAD IN LOIN CLOTHS CAME RUNNING OUT OF THE JUNGLE. I WENT TO GET THE FIRST AID KIT FROM THE BEDDING-ROLL STILL TIED ONTO THE TAIL RACK BUT AS I UNROLLED THE BUNDLE I WAS SNOWED UNDER BY THE CURIOUS LOCALS, WHO COMMENCED PICKING UP THINGS TO EXAMINE THEM. MY HANDS WERE NOW FULL, FOR WHENEVER I TURNED MY BACK THE NATIVES WOULD TAKE FULL ADVANTAGE AND DIVE AMONGST THE GEAR, AFTER SOUVENIRS, THUS FORCING ME TO STAY CLOSE TO THE SCOOTER.

THINGS WERE AT THEIR WORST WHEN A CAR PULLED UP AND A SINHALESE DRESSED IN WHITES JUMPED OUT. "CAN I HELP? I AM A HOSPITAL ATTENDANT."

"YOU MOST CERTAINLY CAN," I SAID AND HANDED HIM THE FIRST AID KIT. THEN, BORROWING A LARGE CANE KNIFE FROM A STARING LOCAL, I GOT BUSY CUTTING BAMBOO SPLINTS FOR MY HELPER AND QUICKLY RETURNED TO RESCUE THE SCOOTER FROM THE MARAUDERS. I REPACKED AND WALKED ON THE TOES OF THE LIGHT-FINGERED LOCALS, USING MY BIG BOOTS TO THEIR FULL ADVANTAGE.

WHEN EVERYTHING WAS LASHED DOWN I WENT TO SEE THE PATIENT. HE WAS LOOKING A LITTLE HAPPIER AS THE HOSPITAL ATTENDANT FINISHED OFF A NEAT JOB ON HIS ARM BY PUTTING ON A SLING.

"I WILL TAKE YOUR FRIEND TO THE HOSPITAL IF YOU LIKE. IT IS FOURTEEN MILES AWAY." I AGREED AND THANKED HIM.

THE CAR WAS AN OLD MODEL PLYMOUTH WITH SIX PASSENGERS JAMMED INSIDE BUT IT DID NOT REMAIN THAT WAY FOR LONG FOR THE ATTENDANT OPENED THE DOOR AND FORCIBLY DRAGGED ONE OF THE PASSENGERS FROM THE BACK SEAT TO MAKE ROOM FOR KEITH. THE PASSENGER RESISTED VIOLENTLY BUT HE LOST THE BATTLE AND KEITH WAS PUT INSIDE AND THE DOOR SLAMMED SHUT.

I WAS STILL INQUIRING ABOUT THE LOCATION OF THE HOSPITAL WHEN THE CAR WAS SLIPPED INTO GEAR AND ROARED OFF ROUND THE BEND TO BE SWALLOWED UP BY THE GREEN JUNGLE, LEAVING ME STANDING BY THE ROADSIDE TOGETHER WITH THE WIDE-EYED WATCHERS.

I PUSHED MY WAY BACK TO THE SCOOTER. THERE SEEMED TO BE LITTLE DAMAGE TO THE MACHINE AS THE SPECIALLY MADE STEEL PANNIERS ON THE SIDES HAD SAVED THE DAY WHEN WE HIT THE PATCH OF DIESEL OIL COVERED BY A LAYER OF WET OX DUNG. WE HAD ONLY BEEN THREE DAYS IN CEYLON AND THIS WAS OUR FIRST DAY ON THE ROAD WITH OUR "RABBIT" SCOOTER.

I HEAVED THE SCOOTER ONTO ITS WHEELS, STARTED THE MOTOR, AND BULLDOGGED IT BACK ONTO THE BITUMEN THROUGH THE STICKY LOAM. WITH THE HELP OF TWO OF THE MORE INTELLIGENT BYSTANDERS, I MADE IT AND ROARED OFF IN THE WAKE OF THE PLYMOUTH.

NEXT MORNING KEITH WAS SITTING UP IN BED WITH HIS ARM SET IN PLASTER FROM THE HAND ALMOST TO THE SHOULDER. HE HAD TOLD THE DOCTOR THAT HE WOULD BE TRAVELLING ON THE BACK OF A MOTOR SCOOTER AND HE WANTED A SOLID JOB AND THE DOCTOR HAD OBLIGED. HE WAS DECLARED FIT, SO, ARMED WITH AN X-RAY AND A STATEMENT FROM THE DOCTOR ABOUT THE FRACTURE, WE RETURNED TO A WAITING TAXI. KEITH WAS GLAD TO BE OUT IN THE FRESH AIR AGAIN. HIS HOSPITALISATION HAD BEEN ON THE FREE LIST AND HE HAD BEEN PLEASED TO BE TREATED BY AUSTRALIAN-TRAINED DOCTORS. THE REST OF THE DAY WAS SPENT QUIETLY AT THE REST HOUSE, WRITING AND TAKING STOCK OF THE SITUATION.

UNDER THE CIRCUMSTANCES THERE WAS ONLY ONE THING TO DO, GO BACK TO COLOMBO AND SEE IF WE COULD GET THE SCOOTER FIXED. AFTER SEEING KEITH OFF ON THE COLOMBO BUS I LOADED UP AND SET OUT.

ELEVEN MILES FURTHER ON THE SCOOTER STARTED TO PLAY UP AGAIN AND I PULLED IN UNDER THE OVERHANGING ROOF OF A WOULD-BE GARAGE TO TRY TO FIX IT. THE HELI-COIL HAD AGAIN WORKED LOOSE BUT THIS TIME IT WAS A WORKSHOP JOB. I WAS STUCK! NOT HAVING ANY DESIRE TO REMAIN THERE INDEFINITELY, I ASKED THE GARAGE OWNER IN SIGN LANGUAGE IF HE WOULD GET THE SCOOTER AND ME A LIFT TO COLOMBO ON A TRUCK. HE SAID HE WOULD HELP SO I SETTLED DOWN FOR A LONG WAIT.

BUT I HAD NOT BEEN SETTLED LONG WHEN SEVERAL CURIOUS NATIVES CAME TO GAZE AT ME AND THE MECHANISED RICKSHAW. THEY PROCEEDED TO POKE AND FINGER THE SCOOTER AND ME. MY CRASH HELMET PARTICULARLY FASCINATED THEM. AFTER MUCH STUDYING THEY FINALLY ACCEPTED ME AND I WAS OFFERED SOME BETEL NUT TO CHEW. NOT WISHING TO OFFEND I ACCEPTED AND TOOK THE LIME SMEARED LEAF AND NUT AND POPPED IT INTO MY MOUTH AND STARTED CHEWING. THIS AMUSED MY AUDIENCE NO END AND THEY GIGGLED AND YABBERED TO EACH OTHER AS I SLOWLY AND RELUCTANTLY CHEWED THE CONCOCTION. SOME OF THEM THEN CAME FORWARD TO DEMONSTRATE HOW THE NUT SHOULD BE CHEWED, AND THE CORRECT METHOD OF SPITTING OUT THE RED JUICE. THIS GRADUALLY DEVELOPED INTO A LONG DISTANCE SPITTING COMPETITION, THE TARGET BEING A PEPSI COLA SIGN. AT THE FIRST OPPORTUNITY I GOT RID OF THE FOUL STUFF, REMOVING IT QUIETLY SO THAT NO ONE WOULD BE OFFENDED.

AT THIS POINT A PITH-HELMETED RUBBER PLANTER WALKED IN, "ONE OF MY BOYS TOLD ME YOU HAD BROKEN DOWN, CAN I BE OF ANY ASSISTANCE?" HE ASKED.

I HAD JUST FINISHED EXPLAINING THE SITUATION TO HIM WHEN A MORRIS PANEL VAN PULLED UP FOR PETROL. IN NO TIME MY HELMETED FRIEND HAD SECURED A LIFT FOR THE SCOOTER AND ME IN THE VAN TO COLOMBO. A SPACE WAS CLEARED FOR THE SCOOTER AMONGST A NUMBER OF APPLE CASES IN THE BACK, LEAVING JUST ENOUGH ROOM TO SQUEEZE IN OUR GEAR AND ONE OF THE PASSENGERS FROM THE FRONT, TO GIVE ME A SEAT.

WE MOVED OFF WITH THE VAN RIDING HEAVILY ON THE ROAD AND THE DRIVER TRYING HIS BEST TO IMPRESS ME WITH HIS DRIVING AS HE DARTED IN AND OUT OF TRAFFIC, NARROWLY MISSING HEAVILY LADEN OX-CARTS AND WANDERING PEOPLE. HALFWAY TO COLOMBO WE STOPPED TO TAKE A DRINK OF COCONUT MILK AND WHILE I WAS DRINKING I HEARD A LOT OF CONVERSATION BETWEEN THE DRIVER AND THE MAN IN THE BACK OF THE VAN. BY THE LOOK ON THEIR FACES THEY WERE TALKING ABOUT ME. FEELING SUSPICIOUS OF THE COMPANY, I FINISHED MY JOURNEY TO COLOMBO WHERE THEY DROVE ME TO OUR SCOOTER AGENT, COLOMBO TRADER, AND UNLOADED THE GEAR AND SCOOTER.

I OFFERED THEM A FEW RUPEES FOR THEIR TROUBLE BUT WAS SURPRISED WHEN THEY REFUSED PAYMENT. IT WAS NOT UNTIL THE FOLLOWING MORNING THAT I DISCOVERED THE REASON FOR THIS, THEY HAD TAKEN A CAMERA OUT OF MY RUCKSACK, ALONG WITH TWO FILMS.

WHEN I DISCOVERED THE THEFT I FELT VERY ANNOYED WITH MYSELF FOR BEING SO FOOLISH TO LEAVE A CAMERA SO HANDY TO PROBING FINGERS. LUCKILY I HAD IT INSURED, AND I HAD LEARNT A VALUABLE LESSON.”

#####

Shed Captain Roster - August 2017

Monday		Tuesday		Wednesday		Thursday		Friday		Saturday	
31	Brian Harris	1	Dave Southern	2	AM Rob Otto PM Warne Wilson	3	John Drewe	4	John Muller	5	Warne Wilson
7	John Muller	8	Greg McCosker	9	AM Max Barrenger PM Warne Wilson	10	John Holland	11	Nigel Cundy	12	
14	Lionel Tilley	15	Tom Black	16	AM Leigh Boynton PM Keith Carter	17	Ian Colledge	18	Hamish B/wick	19	Keith Muirhead
21	Dave Banister	22	Bruce Chapman	23	AM Rob Otto PM Warne Wilson	24	Ray Bryant	25	Dave Edmond	26	Graham Bradford
28	Brian Harris	29	Dave Southern	30	AM Max Barrenger PM Keith Carter	31	John Drewe				

Shed Captain Roster - July 2017

Monday		Tuesday		Wednesday		Thursday		Friday		Saturday	
										1	Graham Bradford
3	Dave Banister	4	Dave Southern	5	AM Leigh Boynton Keith Carter	6	John Drewe	7	Hamish B/wick	8	Warne Wilson
10	Brian Harris	11	Greg McCosker	12	AM Rob Otto PM Keith Carter	13	John Holland	14	Dave Edmond	15	
17	Lionel Tilley	18	Tom Black	19	AM Max Barrenger PM Keith Carter	20	Ian Colledge	21	Nigel Cundy	22	Keith Muirhead
24	Dave Banister	25	Bruce Chapman	26	AM Leigh Boynton PM Keith Carter	27	Ray Bryant	28	Hamish B/wick	29	Graham Bradford

Who's Who in BRWG Inc. 2016 - 17

Patrons - Andrew Powell MP, Mark Jamieson - Mayor SCRC, and Cr. Jenny McKay

President	John Muller	0418 871 946
Vice President		
Secretary	Graham Beaumont	0449 081 092
Asst. Secretary	Dave Edmond	5478 6932
Treasurer	Brian Harris	5445 7921
Asst. Treasurer	Lindsay Thomas	
Newsletter Editors	Greg McCosker, Graeme Beaumont	newsletter.brwg@gmail.com
Website Editor	Dave Edmond	5478 6932
Publicity Officer		
Recruitment Officers	Dave Banister, Lionel Tilley, Tom Black,	Dave Edmond.
Activity Officers	John Drew, John Clarke, Warne Wilson, Brian Harris, Max Barrenger	Dave Banister, Keith Muirhead,
Safety Officers	Dave Banister, Warne Wilson	
First Aid Officer	John Drewe	
Events Organiser	Rick Vickers	0408 663 842
Shed Managers	Graham Bradford, Bruce Chapman (0422	927 032)
Amenity Officer	Hamish Borthwick	
House Officer	Jan Clements	
Purchasing Officer	Rob Otto	
Training Officers	Sarah Odgers, Nigel Cundy	
Librarian	Brian Holdsworth	
Timber Management	John Holland, Ron Donald, Ron Rothwell,	Bruce Chapman



A Division of Trafalgar Projects Pty. Ltd. ACN 008 502 663

Unit 1, 34 Page St., Kunda Park, Qld 4556
Tel 5445 2189
Fax 5445 6392
E. admin@thestaircompany.com.au
Post P.O. Box 5332 Maroochydore BC 4558

Monday	General Activities
Tuesday	Turning & Carving
Wednesday	General Workshop & Toys
Thursday	Furniture & Joinery
Friday	General Activities
Saturday	General Act. & Demo's