

Issue No. 249
March 2018



PRESIDENT'S REPORT

G'day All Woodies.

The Guild started the journey for the future in September 2015 with the planning meeting in Montville and we are approaching the achievement of one of the significant goals set as a result of that meeting. The construction of a new building to cater for the growth in membership.

I have recently come to realise that we are all now almost three years older than when the decision was made to expand our facilities at the Sports Ground and time does tell on some bodies. Thankfully, we have members who are able to scale ladders and fix leaks on the roof, etc., etc. To those fit members, the club owes a big "thank you". To those who are not so fit but have contributed in huge ways, thank you too. The club finances on this project are all the better for the members contribution in kind (labour).

The New (John Henderson) Shed

The kitchen is complete and operational now; work benches for pyrography, scroll saw work and carving are almost complete and can be used within a week of this report. There is still a lot of finishing work to do before the official opening on 14 April and we are still looking for help to make the place shipshape and fully operational.

The old tennis club building is being cleaned up and painted to act as the Guild's office. As soon as that is complete, the old lunch room will be renovated to house the new lathes which have been waiting patiently in the storeroom. Greg and his team are building the oversized "bush toilet" building which will house the dust extraction system specifically for the lathe area. This will allow the existing dust extraction system to cope better with the other machinery.

I was asked the question today "Where is the money for all this new work coming from?" The Management Committee has kept everyone informed about the progress and finances on the new shed however the following summary will highlight where and how your membership \$'s are being spent.

Cost up to 29/12/2017	\$30,275.72	
Cost from 1/01/18 to 10/03/18	\$23,946.39	
Donations:		
Engineering sub-total	\$2,500.00	Not included in
Hardboard Sheeting total	\$760.00	Not included in Sub
Glulam Beams for benches	\$13,000.00	Not included in sub-to-
Kitchen Bench timber total	\$284.00	Not included in sub-

Sub-Total, funds to date	\$54,222.11	
Grants from Council	(\$30,000.00)	

Total Club Expenditure	\$24,222.11	
	=====	

Please note that two motions approved expenditure of approximately \$32,500.00 from Club funds to this project so we are ahead thanks in no small part to judicious "scrounging" by members on eBay and Gum Tree for various bits and pieces.

It is also important to note the Guild is financial with funds set aside. The Committee has taken the attitude that whilst it is nice and comfortable to have sizeable bank accounts, monies earned by the membership should be ploughed back into improved facilities for the membership.

MALENY WOOD EXPO:

Plans are well under way for the Barung Wood Expo and the children's workshop. 200 cheese boards, planter boxes and boats are progressing well and thanks to all members who got stuck into making these.

TIMBER STOCKS:

Plenty available to use.

You will notice the log dump is quite full and we have a supply of camphor Laurel logs in the car park. These are from the Council ex Russell Family Park in Montville. The Council and its workers on site have been "copping it" over the destruction of these old trees, mainly from the business people in Montville. Strange, as it is those business people who have been crying out for years for more parking.

The best answer the Council can give is to advise their critics that the wood is not going to be wasted and has gone to a good home.

Secondly, the trees are to be replaced with natives as part of the car park plan.

In the long term, it is perhaps impractical that we will use all the logs but by taking what we can, the Guild is in good standing with the Council into the future. We will also be in a position to share our good fortune (the logs or sawn timber) with other like-minded clubs in our area.

The main trunks of the three large trees were too big for us, with one weighing 7 tonne. However we successfully found a home for them, including two other large stems, one being a *torelliana*.

With the building of the new Car Park, which will not be finished until the end of August, parking in Montville will be at a premium. The Council is striving to set up a temporary park on the school oval and is calling for community groups interested in manning the oval as "parking attendants", for a fee of course.

The Guild is looking at participating to raise funds; watch this space.

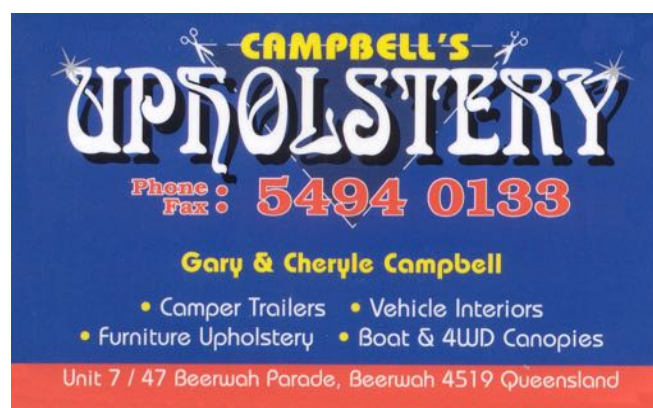
HAND TOOLS:

Dave Edmond has been running hand tool course which have proved to be very popular. The Guild's objective in running these courses is simple; we want to pass on to the members the skills necessary in doing woodcraft the traditional way, as in this day and age of electric tools and large woodworking machinery, those skills will disappear.

Our range of hand tools is limited and not necessarily the best quality, so we applied for a Maleny Rotary grant and have been advised we have been successful. Again, watch this space.

To all members not feeling the best, we wish you well and look forward to seeing you at the shed soon. Take care! Dave, Allan, Hamish get well. You are missed!

John Muller
President.



Maintenance Report *by Terry O'Connor*



This shows damage to the mechanism to adjust the table angle on the almost brand new Hammer band saw, where five teeth were sheared off, requiring very considerable force, and a costly repair to an expensive, precision machine. As if the extent of damage was not bad enough, the person failed to report the damage to the Shed Captain. If the person wants to discuss how the damage occurred, or request training as to how to use the mechanism correctly, please see a Committee Member.



They say don't try this
at home... so I'm going
to go to my friends
house and try it.



ALL ABRASIVES INDUSTRIAL ABRASIVES SUPPLIER



DAVID BLACK
PROPRIETOR



Phone: (07) 5443 9211
Phone: (07) 5443 9527
Mobile: 0413 945 798
Fax: (07) 5443 5714
4/20 Kayleigh Drive
Maroochydore Qld 4558





From the Editor

Compound Angles; No Math - by Christopher Schwarz

Once you understand 'resultant' angles, saw benches (and chairs) are easy.

Most first-time chair makers are intimidated by the compound joinery used to fasten all the legs, stretchers, spindles and arms. The truth is, it can be quite complicated if you try to figure out everything using trigonometry. But if you take some lessons from other chair makers (like I did more than 10 years ago), there are easy ways to design and build chairs without math.

So put away the scientific calculator and fetch some scrap pine, 12-gauge steel wire from the home centre and needle nose pliers. We're going to design and build a simple saw bench with five pieces of wood and compound angles.

When chair makers talk about the angles of chair parts, they use the terms "rake" and "splay" to describe them. Rake is the angle of the legs when you look at the chair from the side. The front legs rake forward; the rear legs rake back. Splay is the angle of the legs when you look at the chair from the front. Chair legs splay out. I don't mess around with describing or measuring rake and splay much, except to explain it to other builders.

Instead, I use what is called the "resultant angle" – one angle that describes both the rake and splay. You can calculate this angle with trigonometry, but there is a simpler way to think about compound leg angles for those who consider mathematics a cruel master.

The resultant angle is not measured from the front or side of a chair. Instead of looking at a chair from the front or side, you look at the chair from a position in space where the leg doesn't appear angled at all.

Video: See how to [level the legs of a sawbench](#) with simple tools.

Blog: Learn [how to cut wooden wedges](#) on the band saw.

Web site: Visit [Country Workshop's web site](#) for more information on chair making.

To buy: Drew Langsner's ["The Chairmaker's Workshop"](#)

In our store: ["Make a Windsor Chair with Mike Dunbar"](#)

From the June 2015 issue of Popular Woodworking



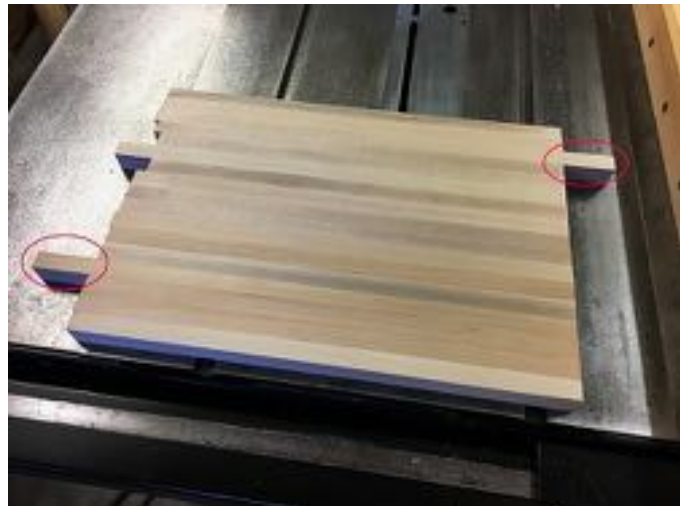
24 hour Fast Glass Replacement

Mobile: 0427 943 733
Phone: 5494 3733 Fax: 5494 3473
6 Lawyer Street, Maleny

From the Editor ! Anti-snipe tip

“This isn't a jig or fixture but rather a tip...

When I do my glue-ups for cutting boards I leave a 'stick' or two a bit longer on either end to prevent snipe in either the planer or the drum sander. This has the same effect as feeding a sacrificial board before and after your target board for surfacing. I don't always get snipe on my planer but it's often enough that doing this eliminates the snipe. The little board that's protruding may get some snipe but the target board doesn't. Hope this works for you like it does for me.”



Thanks to : Difalkner Router Forum

Safety Notes *by Warne Wilson and Dave Banister*



Now, we all know safety ain't no laughing matter, but as we have nothing to report this month, sometimes it is OK to smile !



“Is there a reverse switch on the drill?”

The reason we do not harvest our own logs is because we do not have two ladders

Club Events Calendar



The biggie this month is of course the opening of the John Henderson Building, at 10.30 am **Saturday 14 April, 2018**. All members and partners are invited, so make sure you RSVP. This is a special moment in the history of the Guild, and should be celebrated.

The other date claimer is the Maleny Wood Expo, from Saturday 5 May through to Monday 7 May 2018. I imagine right now you are flat out making a diverse selection of wonderful wood products to sell !



Around the Shed



Just to prove that there is life beyond the new shed, here is Brian relaxing on a school bench he and John repaired on a blazing hot summer day, as our commitment to our relationship with the Montville School P & C.



But then of course; back to the Shed ! What a mighty fine kitchen for a storage shed, and such lovely benches which seem perfect for carvers. How many carvers does it take to make a bench (with long legs)?





"That should clear the rug."

Well, not exactly clearing the rug (it is a storage shed after all !), but it does help to swing the door so that it opens to allow access to the rack about to be built behind it.



Is that really Dave the Master Hand Tool Coach dropping his standards to use a domino machine ? All for a good cause I suppose, making the carvers tables, and peer pressure.

DIGITAL SIGNAGE SPECIALISTS

Bruce Allen
Director

ATL
Graphix

atlgraphix@bigpond.com
www.atlgraphix.com.au

p 07 5494 0666
f 07 5494 0677

ONLY LIMITED BY YOUR IMAGINATION!



But the scroll saw drivers, and the pyrography artists are not to be outdone. They scored five new benches. Plenty of room for everyone, so roll up, roll up.

It has been fantastic to see Dave Bannister's smiling face around the club again, and as it is impossible to keep a good man down, straight back to work, spraying members work, on one leg of course. Great effort Dave. You are a fabulous benefit to the Guild.

APHORIS :

"A SHORT, POINTED SENTENCE THAT EXPRESSES A WISE OR CLEVER OBSERVATION OR A GENERAL TRUTH."

- 1. THE NICEST THING ABOUT THE FUTURE IS THAT IT ALWAYS STARTS TOMORROW.**
- 2. MONEY WILL BUY A FINE DOG BUT ONLY KINDNESS WILL MAKE HIM WAG HIS TAIL.**
- 3. IF YOU DON'T HAVE A SENSE OF HUMOUR YOU PROBABLY DON'T HAVE ANY SENSE AT ALL.**



The
**STAIR
COMPANY**

A Division of Trafalgar Projects Pty. Ltd. ACN 008 502 663

Unit 1, 34 Page St., Kunda Park, Qld 4556
Tel 5445 2189
 Fax 5445 6392
 E. admin@thestaircompany.com.au
 Post P.O. Box 5332 Maroochydore BC 4558

Timber Tales by Bruce Chapman



Those wondering when we might have more Camphor Laurel need wonder no more. You may have seen the pile in the carpark.



One of the logs in the milling pile seems to be saying it did not agree with being cut down so it has gone on growing !

Extensive Range
Top Overseas Brands*

ONLINE
ORDERS
Code BRWG10

10%^{}**
OFF

For BRWG Members

Timbecon
Everything to get wood working

timbecon.com.au

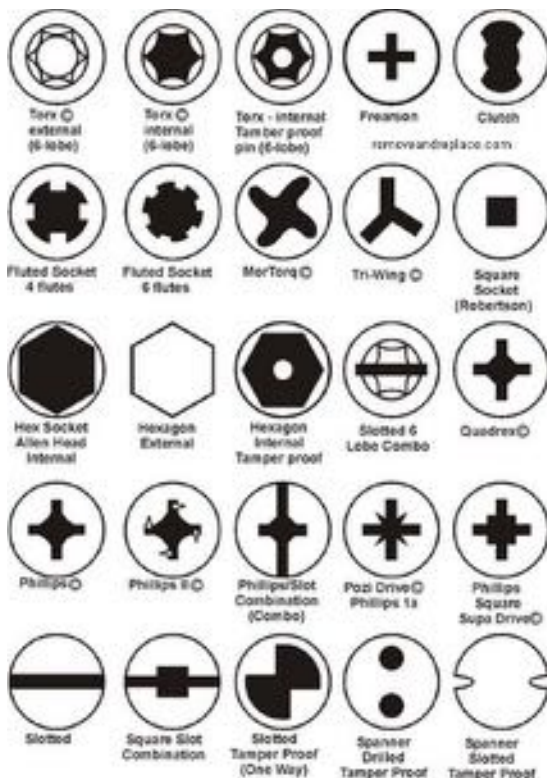
WA / 31 Carnale Rd, Carling Vale 6156
VIC / 18/1b Newlands Road, Reservoir 3073
T / 1500 880 598 E / sales@timbecon.com.au

* Some products excluded
** Minimum order of \$10. Further conditions apply



One of Dave Southern's carved trays

Did you know ????



Did you have any idea how many different screw heads there are out there ? So next time you ask for screws, could you please be specific !

Who's Who in BRWG Inc. 2017 - 18

Patrons - Andrew Powell MP, Mark Jamieson - Mayor SCRC and Cr Jenny McKay

President	John Muller	0418 871 946
Vice President	Greg McCosker	0418 746 420
Secretary	Graham Beaumont	0449 081 092
Asst. Secretary	Dave Edmond	5478 6932
Treasurer	Brian Harris	5445 7921
Asst. Treasurer	Lindsay Thomas, Julie Breen	
Newsletter Editors	Greg McCosker, Max Barrenger	
Website Editor	Dave Edmond	5478 6932
Publicity Officer	John Andrews, Hamish Borthwick	
Recruitment Officers	Dave Banister, Tom Black, Dave Edmond, Keith Muirhead	
Activity Officers	John Drew, John Clarke, Warne Wilson, Dave Banister, Keith Muirhead, Brian Harris, Max Barrenger	
Safety Officers	Dave Banister, Warne Wilson	
First Aid Officer	John Drewe	
Events Organiser	Rick Vickers	0408 663 842
Shed Managers	Greg McCosker, Terry O'Connor	
Amenity Officer	Hamish Borthwick	
Purchasing Officer	Rob Otto	
Training Officer	Rob Otto	
Librarian	Max Barrenger	
Timber Management	Ron Donald, Bob Rothwell. Bruce Chapman	

RIGHTY HELPFUL
MITRE 10 TIMBER and HARDWARE
MALENY
"For all your hardware needs"
Phone 5494 2466
 10% Discount to BRWG

Monday	General Activities
Tuesday	Turning & Carving
Wednesday	General Workshop & Toys
Thursday	Furniture & Joinery
Friday	General Activities
Saturday	General Act. & Demo's

Shed Captain Roster - April 2018											
Monday		Tuesday		Wednesday		Thursday		Friday		Saturday	
2	John Muller	3	Tom Black	4	AM Ron Fishwick	5	John Holland	6		7	Keith Muirhead
					PM Max Barrenger						
9	Lionel Tilley	10	Bruce Chapman	11	AM Max Barrenger	12	Ray Bryant	13	Dave Edmond	14	Graham Beaumont
					PM Warne Wilson						
16	Dave Banister	17	Dave Southern	18	AM Leigh Boynton	19	John Drewe	20	Dave Edmond	21	Warne Wilson
					PM Terry O'Connor						
23	Brian Harris	24	Greg McCosker	25	AM Rob Otto	26	John Muller	27	Don English	28	Keith Muirhead
					PM Keith Carter						
30	John Muller										

Shed Captain Roster - May 2018											
Monday		Tuesday		Wednesday		Thursday		Friday		Saturday	
		1	Tom Black	2	AM Ron Fishwick PM Warne Wilson	3	John Holland	4		5	Graham Beaumont
7	Lionel Tilley	8	Bruce Chapman	9	AM Leigh Boynton PM Terry O'Connor	10	Ray Bryant	11	Dave Edmond	12	Warne Wilson
14	Dave Banister	15	Dave Southern	16	AM Rob Otto PM Keith Carter	17	John Drewe	18	Dave Edmond	19	Keith Muirhead
21	Brian Harris	22	Greg McCosker	23	AM Ron Fishwick PM Warne Wilson	24	John Muller	25	Don English	26	Graham Beaumont
28	John Muller	29	Tom Black	30	AM Leigh Boynton PM Terry O'Connor	31	John Holland				