

PRESIDENT'S REPORT

Hello all,

It's been a busy couple of months and I thank everyone who has helped me in my first three months as President, it feels like the baptism of fire. I'm sure I wouldn't have survived without your help.



Kev has covered most of the maintenance and updates to the club facilities so I won't bore you by repeating them.

CHRISTMAS LUNCH SATURDAY 10th DECEMBER

We have successfully booked The Spit Roast Company to come to the Shed and cook a pig, dress it and also supply chicken and salads. They also supply disposable plates, cutlery and serviettes.

The cost per person is \$35 and the Club will cover the remainder. Bring your own drinks.

__+_+_+_+_+_+_+_+_

The grants team Peter Rich and Dave Friend have been extremely busy obtaining grants to put towards our constant upkeep and repairs to our requirements.

A big thank you to you both.

If you ordered a cap they are in .

I also ordered some extras if any one would like one they are \$20 each.

One of our members was a paramedic and has offered to do a demo on the AED.

What is the AED?

It's the defibrillator that Kerry Packer started , to have a defibrillator in every Ambulance, better known as The Whacker Packer. Now of course they are everywhere.

So early in the New Year we will arrange for the demo.

As Kev has already said more improvements are being made for timber storage etc.

The Barung Maleny Wood Expo is well and truly being planned. We have been busy making items to be added to their show bags for the less fortunate.

Thank you Philippa for keeping us up to date with what more we need to do and the colouring of the puzzles.

Our painter extraordinaire Dave Banister has completed them by sealing and spraying them all, thank you Dave.

A huge thank you to the ladies who have made bags for the puzzles, they are amazing, so beautifully made.

Our Santa Shop and Competition are behind us now and thank you to all those who put in such a great effort to make the weekend a success. Deals of results from the competition follow.

Cheers,

Julie Breen

BRWG President

0409 277 666

president@blackallrangewoodies.org.au

RESULTS OF WOODIES COMPETITIONS FOR 2022

4 X 2 COMPETITION

1ST Gary Emmett
2ND John Muller
3RD Rob Otto

TURNING - FACE PLATE

1ST Bruce Chapman
2ND Ivan Yaksich

TURNING - SPINDLE

1ST Ivan Yaksich

CLOCK

1ST Sarah Odgers

BOX MAKING

1ST John Muller
2ND Gary Emmett
3RD Rob Otto

TOY MAKING

1ST Ray Bryant
2ND Sarah Odgers

CARVING - TRADITIONAL

1ST Kaz Depczynski
2ND Tom Black
3RD Trevor Irvine

CARVING - POWER

1ST Bruce Chapman
2ND Tom Black

SMALL JOINERY

1ST Sarah Odgers

LARGE JOINERY

1ST Tom Black

SMALL JOINERY - NOVICE

1ST Les Howarth

CARVING - TRADITIONAL - NOVICE

1ST Sarah Odgers

TOYMAKING - NOVICE

Ursula Doohan

MISCELLANEOUS - SCROLLSAW

1ST Max Barrenger

MISCELLANEOUS - NOVICE

1ST Philippa Friend

2ND Ursula Doohan

4X2 Competition



Club Competition Winners



Tom Black





Ray Bryant



"I know I'm not supposed to interfere, but how's the dog going to climb through that?"

A bit of light humour
provided by Ron
Turner



Mitre 10

**TIMBER AND HARDWARE,
MALENY**

"For all your Hardware needs"

Phone 5494 2466

ALL ABRASIVES
INDUSTRIAL ABRASIVES SUPPLIER

DAVID BLACK
PROPRIETOR

Phone: (07) 5443 9211
Phone: (07) 5443 9527
Mobile: 0413 845 798
Fax: (07) 5443 5714
4/20 Kayleigh Drive
Maroochydore Qld 4558

Logos: TBM, flexovit, BERT, KENTON, INERSA, 3M

The Woodies and the organisers of Sculpture on the Edge (SOTE) have agreed to collaborate with each other to advance the interests of both non-profit organisations. The Woodies Santa Shop is being held during the SOTE event which opened the possibility of each organisation supporting the other by encouraging their visitors to attend the other's event so as to maximise attendances and to provide visitors to the Sunshine Coast the opportunity to witness two excellent tourism attractions.

SOTE have informed all their readers about Woodies Santa Shop in their regular newsletter, have agreed to distribute our flyers during their event, and to display our corflute signs in the vicinity of their venue Flaxton Gardens. To reciprocate we have agreed to display their signs, flyers etc at our event.

Copy of their flyer is attached for reading by Woodies members, and I encourage everyone to visit SOTE at Flaxton Gardens to see the amazing display of 140 first class quality sculptures. I attended their Opening Night which was excellent, and there are two more night-time functions this Saturday and the following Saturday that Woodies members may wish to support. Check www.sculptureontheedge.com.au for further details.



Trevor Irvine's entry
in Sculpture on the
Edge -
His Peruvian Sun god



Arts Connect Inc.
presents

Sculpture ON THE EDGE 2022 FLAXTON GARDENS 20 NOV - 04 DEC



www.sculptureontheedge.com.au



sculptureontheedge



SculptureontheEdgeSC



Sunshine Coast
Council

Public Art Program
www.sunshinecoast.qld.gov.au



Flaxton Gardens
Flaxton Gardens
www.flaxtongardens.com.au



Arts Connect Inc.
presents

Sculpture ON THE EDGE 20 NOV - 04 DEC 2022 FLAXTON GARDENS



Come and enjoy Arts Connect Inc.'s annual sculpture competition featuring over 140 indoor and open air artworks, artist talks, workshops and special events.



OPENING NIGHT SATURDAY 19 NOVEMBER 6PM
SCULPTED DINNER SATURDAY 26 NOVEMBER 6PM
THE CLOSING PARTY SUNDAY 04 DECEMBER 5PM

TO BOOK IN FOR A SPECIAL SET MENU LUNCH OR TO ORDER A PICNIC GO TO
<https://flaxtongardens.com.au/sculpture-on-the-edge/>



Proudly supported by Sunshine Coast Council's grants programs and our generous sponsors.

OPEN DAILY 9AM - 3PM

313 FLAXTON DRIVE, FLAXTON

Timber Bits from Bruce Chapman

For Sale -

A list of the timbers available in each bay.

- 1- Fiddlewood
- 2- Fiddlewood
- 3- Red Cedar
- 4- Red Cedar
- 5- Silky Oak
- 6- Silky Oak
- 7- Silky Oak
- 8- Silky Oak
- 9- Mixed western timbers
- 10- Black Wattle
- 11- Tallowwood
- 12-
- 13- Magnolia
- 14- Fiddlewood
- 15- Fiddlewood
- 16- Hoop / Norfolk Island Pine
- 17- Hoop / Norfolk Island Pine
- 18-Camphor Laurel
- 19- Camphor Laurel
- 20- Camphor Laurel
- 21-
- 22-
- 23- Jacaranda –low stock
- 24- Silver Ash slabs
- 25- Silver Ash
- 26- Mango

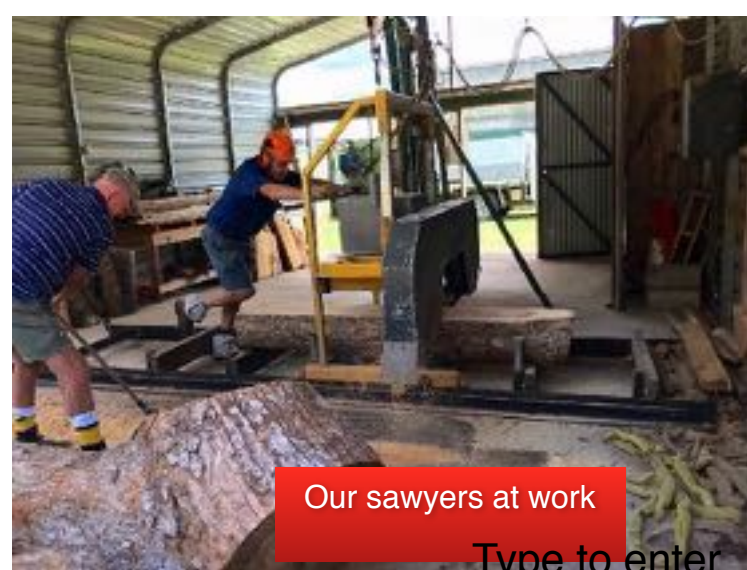
Drying Rack – NOT AVAILABLE for purchase.

Timber here is stabilised after being taken from the kiln. Generally moved to sales area in one week. Please keep the front of this area clear. We need to access the timber here every Friday. Silky oak in rack will be available within a week.

Our Wood story for our newer members



The start



Our sawyers at work

Type to enter
text



Drying racks for wood until there is
room in the kiln



Kiln doors



Inside the kiln. Wood can
spend up to 1 month here



The timber ready for use



Type to enter text



These photos taken at the shed show Rob and Kev making the seed box for Maleny Library with some guidance from Shed Captain Steve. Our appreciation goes to Rob and Kev for volunteering their time and skills and demonstrating the community spirit of Woodies.



Shed Managers Report

November 2022

Maintenance:

Damage to equipment has not been too bad this month. Some exceptions have included:

- The Festool Drop Saw was found to be not cutting square. It took a while to find the issue, but it turned out to be a bent guide on the back right hand side. This is undoubtedly due to kick back incidents giving hard knocks to the guide. Please use this saw only for what it is intended. To be suitable for this saw, a piece of wood must:
 - Be flat against the back guides, and
 - Be flat against the bottom plate.

So, it is not machined on at least 2 sides, and flat, please do not use this saw. There are plenty of other options for rougher timber. This was an expensive fix.

- The Woodman No 2 Saw was lift with so much built up resin that the body of the blade was effectively wider than the kerf. No blade will cut well under those circumstances. Not sure which is worse, not noticing it, or walking away and leaving it like that. If a blade becomes clogged up, tell the shed captain so it can be cleaned.
- Saw Mill bearing guides. The mill had a small issue this month where it tried to cut a sling. Relatively easy fix.

Projects

We have a number of projects underway on upgrading BRWG facilities, and the following is a progress update for members.

Henderson Roof. We have had a major fix underway with the roof repairs. As members will be aware, the prior painting had failed badly, and large sections were flaking and rusting underneath. As well, the seam joints had been a constant source of minor leaks. A contractor has pressure cleaned, treated the seams and encapsulated the roof in a rubber membrane. We are currently resolving some defects with that work.

Kiln Upgrade. This work has commenced, with the kiln being enlarged. Materials are nearly all on site, and after the open day we shall commence on the repairs to the roof. Options for the fan upgrade are currently being examined.

Millers Cave. Ron Donald will speak separately on this, but the aim is to progress the sheeting of the northern end to improve water-tightness.

New Wood Wiz. Some planning work has progressed on the re-arrangement of timber storage to allow the construction of another lean-to shed beside the painter's container. This will allow the existing area where the mill used to be to be used for the WoodWiz. Some work on preparatory relocation of stored wood will progress on Ron's working bee.

MultiPurpose Table. Two of the tables have been made, and the Festool equipment has arrived. Some minor work is outstanding on the dust extraction, but Rob Otto is planning a demonstration course in the near future to show how to get the most out of the equipment. Look out for it.

Kev Devlin and Brian Harris

Who's Who in BRWG Inc 2022-2023

Patrons - Andrew Powell MP, Andrew Wallace MP, Winston Johnston (Local Councillor)

President	Julie BREEN	
Vice President	David FRIEND	
Secretary	Pam McLEOD	
Asst Secretary		
Treasurer	Danny NOLAN	
Asst Treasurer	Russ MIDDLECOAT	
Newsletter Editor	Lesley MOTT	
Website Manager	Max BARRENGER	
Publicity Officers	David FRIEND, Peter RICH	
Recruitment Officers	Sarah ODGERS, John MULLER, Dave BANISTER, Julie BREEN, Max BARRENGER, Terry O'CONNOR, Graham BEAUMONT, David SLATTER	
Training / Demo Officer	Steve SQUIRES	
Safety Officers	Russ MIDDLECOAT & Sarah ODGERS	
Welfare Officers		
Events Organiser	Rick VICKERS	
Shed Managers	Kev DEVLIN, Brian HARRIS	
Providor	Kellie DENDLE and Pam MCLEOD	
Purchasing Officer	Brian HARRIS	
Projects Officer	Rob FORSYTH	
Librarian	Rob FORSYTH	
Social Media	Sarah ODGERS	
Timber Management	Bruce CHAPMAN & Ron DONALD	
MVA Sportsground Committee Rep.	Keith CARTER, Max BARRENGER	
MVA Representative	Bruce BARRETT	



Official Newsletter of The Blackall Range Woodcrafters Guild Inc.

PO Box 150 Montville 4560

Email newsletter@blackallrangewoodies.org.au

Shed Phone: 0409 050 418

www.blackallrangewoodies.org.au