

President's Report

Welcome Woodies,

We have agreed to go ahead with another expo weekend on the long weekend of October. One of the highlights will be a display of YOUR CNC items created over the last six months. So get going to be ready with traditional and CNC items for the public to buy early Christmas presents. More details and volunteer rosters in the next few months.



Standardising procedures. Steve Squires and Graham Beaumont are producing an excellent set of videos on how to get the kinks out of fresh planks to ready them for further work on the table saws AND the ways that **kickback** occurs when using table saws. They are being peer reviewed by some experienced members so it has street cred. **Kickback** is the most common incident (by a country mile) of dangerous events that occur in our workshops. Please look out for the video on the laptop in the Henderson Shed and absorb the lessons for a safe workplace. I invite ALL members to view these comprehensive videos to keep us all safe.

We recently ran a workshop for shed captains, accreditation officers and mentors on Sat 28 June. This was to explain how each of these groups can work together to ensure we have a common set of actions to safely use our machinery. We will update and refine our procedures after taking advice and feedback from this wise group.

Thanks to those members who went to the Mapleton event on 25 July to show our trade craft to the public.

Please note in your diaries the AGM is on Sat 23 Aug at 9 am. All positions (about 30) will be declared vacant so think about your skills that you may bring to help manage this fantastic guild. Agenda items for consideration should be directed to the Secretary ASAP. Oh yes, come along for the highly anticipated free sausage sizzle after the AGM

For those recovering from surgery or illness or just feeling unwell, we are thinking of your recovery and a return to the Sheds. Stay safe and see you soon.

Regards

Rick

Rick Vickers
BRWG President
0408 663 842
president@blackallrangewoodies.org.au

Shed Managers' Report

A better month again for maintenance, but a few security issues this month.

Maintenance:

The significant items have been:

- The paper on the S4 sander disc was replaced.
- The concertina tube on the main dust extractor developed a hole, and a temporary repair was carried out.
- The Wadkin blade was replaced, and the guides adjusted. It is now cutting spectacularly well.
- TS2 had a broken tooth on its blade, which was replaced. Once again, no one reported any issue with this. You can't break a carbide tooth with timber.
- The Festool Mitre Saw had a major issue with a kickback incident causing the dust boot to get dragged up into the guard. This broke a few bits, but thankfully, no injuries to anyone. We appreciated the member reporting the incident, and learning from it. It is now back in operation.
- Our Laser head for the CNC is currently not operational. This is still being investigated, but looks like being a warranty job.

Safety/Security/Facilities

An awful lot of security issues with Shed Captains closing up this month. Some of the issues have been:

- Toilets left open
- Front bar left open

- Roller Door to timber area left open
- Lights left on in lathe area
- Smoko stuff left out
- Urn left empty
- Office lights left on
- Compressor left on.
-

Thankfully, not all of that happened on one night. Shed Captains might have to start checking against the list again.

Club Projects

Sheree has been working diligently on the rehabilitation project on the back of the shed and storage area. We will be calling for assistance shortly to assist with removal of privet trees. We will also be dumping the sawdust to a track delineated by Sherrie.

Rob Forsythe has now finished the work on the boxes and tables for the Sunshine Coast Council libraries. This has been a great project to enhance our reputation with the SCRC

Graham Bradford has made good progress on the benches for the Maleny Hospital. There was a good response to the notice for volunteers to help with this work. Please liaise with Graham for exact timings on this work.

Kev Devlin and Ted White

Woodies Acknowledge Sunshine Coast Council Grants

Blackall Range Woodcrafters Guild Inc has recently received some excellent support from Sunshine Coast Council by way of community grants.



Proudly supported by
Sunshine Coast Council's grants program

Shed Captains Roster

SHED CAPTAINS ROSTER									
AUGUST 2025									
Monday		Tuesday		Wednesday		Thursday		Friday	
4	Gary Emmett	5	Les Howarth	6	AM Dave Banister PM Keith Muirhead	7	Don Lear	8	John MacLaren
11	John Muller	12	Steve Squires	13	AM Julie Breen PM Keith Carter	14	John Isles	15	Dave Slatter
18	Russell Middlecoat	19	Greg McCosker	20	AM Peter Rich PM Sherri Ward	21	Ray Bryant	22	Tim Killinc
25	Robert Forsyth	26		27	AM Darryl Kajewski PM Neil Stenhouse	28	Kev Devlin	29	Robert Forsyth
								30	Jacqui Porteous

A shed capt will be required for this day

AUGUST 23RD ANNUAL GENERAL MEETING

SHED CAPTAINS ROSTER									
SEPTEMBER 2025									
Monday		Tuesday		Wednesday		Thursday		Friday	
1	Gary Emmett	2	Les Howarth	3	AM Dave Banister PM Keith Muirhead	4	Don Lear	5	Dave Slatter
8	John Muller	9	Steve Squires	10	AM Julie Breen PM Keith Carter	11	John Isles	12	Tim Killinc
15	Russell Middlecoat	16	Greg McCosker	17	AM Peter Rich PM Sherri Ward	18	Ray Bryant	19	Robert Forsyth
22	Robert Forsyth	23		24	AM Darryl Kajewski PM Neil Stenhouse	25	Kev Devlin	26	John MacLaren
29	Gary Emmett	30	Les Howarth					27	Jacqui Porteous

It is the duty Capt's responsibility to arrange a substitute if he/she cannot be captain on the printed roster sheet

SHED CAPTAINS ROSTER - Jan - Jul 2025.xls

Ron Turner

The Success Story of Our Eucalyptus Overseas.

Our Eucalyptus trees are successfully grown in many places around the world and when encountered by Aussi tourists in a foreign country are generally a welcoming sight. In the USA, California, Washington state and South Africa are the home to *Eucalyptus saligna* (Sydney Blue Gum) and have in the past contributed to forestry generally where they are grown. In Australia, our Eucalyptus forests suffer from degradation by fire, insects, disease and drought etc, where grown in plantations overseas, they generally flourish.

One such country to have success in growing our eucalyptus is Uruguay where *Eucalyptus grandis* (Flooded Gum or Rose Gum), a species common to the Blackall Range, is planted. In these plantations, they flourish due to the locations and the plantation methods employed. The plantations shown are grandis clones, 6 years old and have an average diameter of 300 mm. The plantation system of LONE TREE PLANTATIONS was devised by an Aussi forester living in Buenos Aires, Evan Shields. I am told this method is to allow the tree plenty of space with access to good soils, unlike our pine plantations which have a far greater density on poorer soils.

For those Woodies who have used our Rose Gum, they will know it is prone to a lot of fault, such as gum-vein, gum-pockets, end splits, internal checking and borers. It can be a challenging species to make something nice. When you can find a nice piece, such as the slab used for the dining table below, it is a beautiful timber. Such defect-free wood in Rose Gum is few and far between, in my experience. This slab came from the Woodenbong area which must not have had too many bushfires.

Unfortunately, these trees in Uruguay are grown for pulp; well, the world needs toilet paper, and plenty of it. They also produce high quality paper. The wood fibre produced is ideal for furniture, moulding etc it is just a shame it is not more universally utilised.



John Muller
Life Member

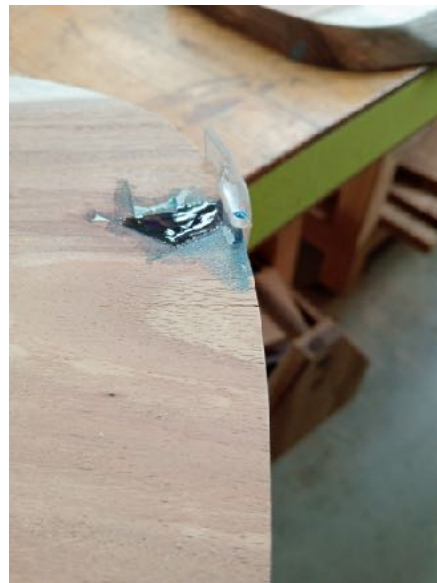
A Handy Tip

Magic Tape

Sealing cracks and edges when using epoxy can be a hassle. Using paper or duct tape usually leads to some or most of the epoxy leaking. Using 'magic' tape in my experience eliminates this problem in most instances.

Magic tape is a thick (up to 2mm) gel like tape usually coming double sided which works into the grain to help with the sealing.

Pictures show after paper tape on top and magic tape on the edge.



Don Lear

Mitre 10

**TIMBER AND
HARDWARE, MALENY**

"For all your
Hardware needs"

Phone 5494
2466

ALL ABRASIVES
INDUSTRIAL ABRASIVES SUPPLIER

W&M

Hex-O-Vit

DAVID BLACK
PROPRIETOR

PIERO

PIERPA

Phone: (07) 5413 8211

Phone: (07) 5413 8627

Mobile: 0413 849 708

Fax: (07) 5413 8711

180 Kayfatch Drive

Manawatu 4558

INDIA

3M



Timber bits from Bruce Chapman

Our stock of camphor laurel is very low. There is only a small amount in each marked bay.

For Sale

A list of the timbers available in each bay.

- 1- Red Cedar
- 2- Red Cedar
- 3- Silky Oak
- 4- Silky Oak
- 5- Silky Oak
- 6- Silky Oak
- 7- Silky Oak
- 8- Bollywood
- 9- Silver Ash (new)
- 10- Candle Nut
- 11- Tallowwood (new stock)
- 12-
- 13- Silky Oak - thicker slabs
- 14- Fiddlewood
- 15- Camphor Laurel
- 16- Silky Oak
- 17- Camphor Laurel
- 18- Camphor Laurel
- 19- Camphor Laurel
- 20- Camphor Laurel
- 21- Spanish Cedar
- 22- Sarsaparilla
- 23- Golden Cyprus
- 24- She oak
- 25- Quandong
- 26- Silky slabs

Drying Rack

NOT AVAILABLE for purchase. Timber here is stabilised after taken from kiln. Generally moved to sales area in one week. Please keep the front of this area clear. We need to access the timber here every Friday. Silky oak in rack will be available within a week.

WHO'S WHO BRWG inc 2024-2025	
Patrons - Andrew Powell MP, Andrew Wallace MP, Winston Johnston (Local Councillor)	
President	Rick VICKERS
Vice President	Russ MIDDLECOAT
Secretary	Clare CAPPA
Asst Secretary	David SLATTER
Treasurer	Danny NOLAN
Asst Treasurer	Russ MIDDLECOAT
Newsletter Editor	Lesley MOTT
Website Manager	Tim KLINIC
Publicity Officers	David FRIEND
Recruitment Officers	David SLATTER and Julie BREEN
Training / Demo Officer	Steve SQUIRES
Safety Officer	Ted WHITE
Events Organiser	Keith CARTER
Shed Managers	Kevin DEVLIN & Ted WHITE
Provider	Darryl KAJEWSKI
Purchasing Officer	Brian HARRIS
Projects Officer	Robert FORSYTH
Librarian	Robert FORSYTH
Social Media	Sarah ODGERS, Michael BROSNAN
Timber Management	Bruce CHAPMAN, Ron DONALD & Robert ROTHWELL
MVA Sportsground Committee Rep.	Keith CARTER, Danny NOLAN,
Grants Officer	David FRIEND
Shed Captains Roster	Ron TURNER



Official Newsletter of The Blackall Range Woodcrafters Guild Inc.

PO Box 150 Montville 4560

Email newsletter@blackallrangewoodies.org.au